



# MASTER LEDtube InstantFit HF T5

## Master LEDtube HF 1500mm HO 26W 840 T5

The Philips MASTER LEDtube integrates an LED light source into a traditional fluorescent form factor. Its unique design creates a perfectly uniform visual appearance, which cannot be distinguished from traditional fluorescents. These T5 lighting tubes are the right choice for absolute performance and are designed to stand up to everyday conditions. Unparalleled savings, thanks to low energy consumption and an exceptionally long lifetime, make these T5 LED tubes the choice for every demanding applications.

### Product data

General Information		Operating and Electrical	
Cap base	G5 [G5]	Line Frequency	39000-60000 Hz
Nominal lifetime	50,000 h	Input frequency	39000-60000 Hz
Switching Cycle	50,000	Power Consumption	26 W
Lighting Technology	LED	Lamp current (max.)	415 mA
EU RoHS compliant	Yes	Lamp current (min.)	240 mA
Light Technical		Starting time (nom.)	0.5 s
Colour Code	840 [CCT of 4000K]	Warm-up time to 60% light	0.5 s
Beam angle (nom.)	200 degree(s)	Power Factor (Fraction)	0.9
Luminous Flux	3,900 lm	Voltage (nom.)	100-135 V
Colour designation	Cool White (CW)	Temperature	
Correlated Colour Temperature	4000 K	Ambient temperature range	-20°C to 45°C
Luminous efficacy (rated) (nom.)	150.00 lm/W	T-Case maximum (nom.)	45 °C
Colour consistency	<6	Controls and Dimming	
Colour rendering index (CRI)	83	Dimmable	No
LLMF at end of nominal lifetime (nom.)	70 %		

# MASTER LEDtube InstantFit HF T5

## Mechanical and Housing

Lamp Finish	Frosted
Bulb material	Plastic
Product length	1,500 mm

## Approval and Application

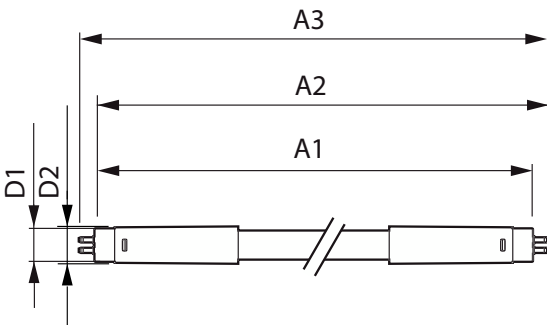
Energy-saving product	Yes
Approval marks	TUV CE marking RoHS compliance KEMA Keur certificate
Energy consumption kWh/1,000 hours	31 kWh

## Product Data

Order product name	MAS LEDtube HF 1500mm HO 26W 840 T5
--------------------	-------------------------------------

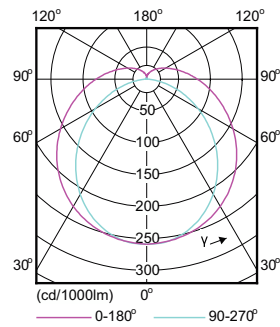
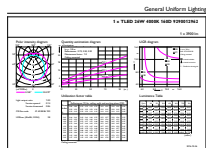
Full product name	Master LEDtube HF 1500mm HO 26W 840 T5
Full EOC	871869668554900
Order code	68554900
Material no. (12 NC)	929001296202
SAP numerator – quantity per pack	1
EAN/UPC – Product/Case	8718696685549
Numerator – packs per outer box	10
EAN/UPC – Case	8718696685556

## Dimensional drawing



Product	D1	D2	A1	A2	A3
MAS LEDtube HF 1500mm HO 26W 840 T5	15.2 mm	21 mm	1,447.8 mm	1,454.9 mm	1,462 mm

## Photometric data

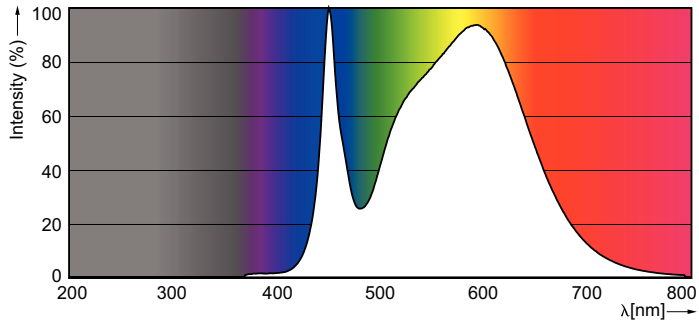


General uniform lighting - MAS LEDtube HF 1500mm HO 26W 840 T5

Light Distribution Diagram - MAS LEDtube HF 1500mm HO 26W 840 T5

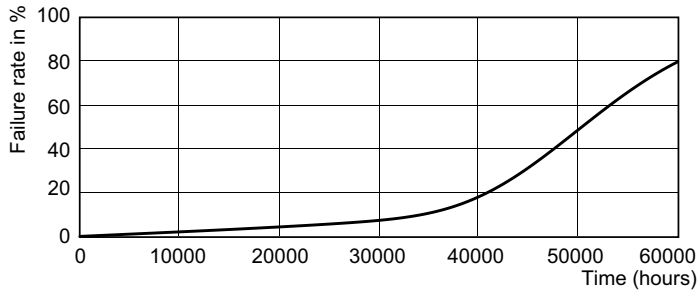
# MASTER LEDtube InstantFit HF T5

## Photometric data

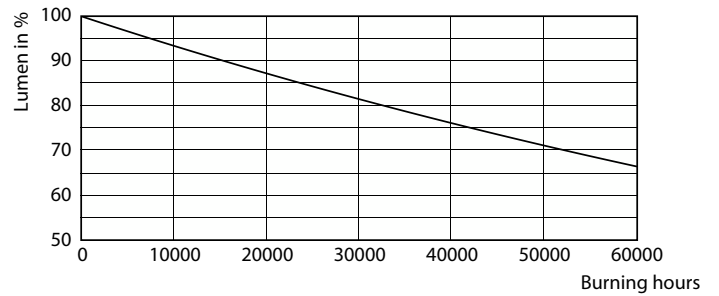


Spectral Power Distribution Colour - MAS LEDtube HF 1500mm HO 26W 840 T5

## Lifetime



Life Expectancy Diagram - MAS LEDtube HF 1500mm HO 26W 840 T5



Lumen Maintenance Diagram - MAS LEDtube HF 1500mm HO 26W 840 T5

