



MASTER LEDtube InstantFit HF T5

MAS LEDtube HF 1500mm HO 26W 865 T5

The Philips MASTER LEDtube integrates a LED light source into a traditional fluorescent form factor. Its unique design creates a perfectly uniform visual appearance, which cannot be distinguished from traditional fluorescent. These T5 lighting tubes are the right choice for absolute performance and are designed to stand up to everyday conditions. Unparalleled savings thanks to low energy consumption and an exceptionally long lifetime make these T5 LED tubes the choice for every demanding application.

Product data

General Information		Operating and Electrical	
Cap-Base	G5 [G5]	Line Frequency	39000-60000 Hz
Nominal lifetime	50,000 hour(s)	Input Frequency	39000-60000 Hz
Switching Cycle	50,000	Power Consumption	26 W
Lighting Technology	LED	Lamp Current (Max)	415 mA
EU RoHS compliant	Yes	Lamp Current (Min)	240 mA
Light Technical		Starting Time (Nom)	0.5 s
Color Code	865 [CCT of 6500K]	Warm-up time to 60% light	0.5 s
Beam Angle (Nom)	200 degree(s)	Power Factor (Fraction)	0.9
Luminous Flux	3,900 lm	Voltage (Nom)	100-135 V
Color Designation	Cool Daylight	Temperature	
Correlated Color Temperature (Nom)	6500 K	Ambient temperature range	-20 °C to 45 °C
Luminous Efficacy (rated) (Nom)	150.00 lm/W	T-Case Maximum (Nom)	45 °C
Color Consistency	<6	Controls and Dimming	
Color rendering index (CRI)	83	Dimmable	No
LLMF At End Of Nominal Lifetime (Nom)	70 %		

MASTER LEDtube InstantFit HF T5

Mechanical and Housing

Bulb Finish	Frosted
Bulb Material	Plastic
Product Length	1,500 mm
Bulb Shape	T5

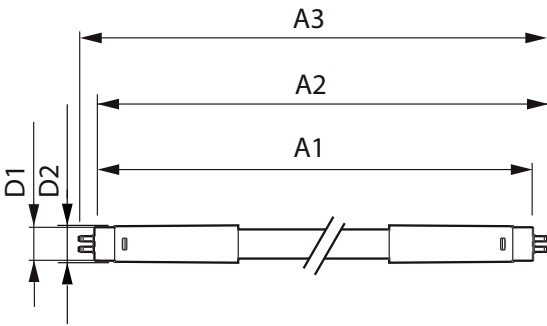
Approval and Application

Energy Saving Product	Yes
Approval Marks	TUV CE marking RoHS compliance KEMA Keur certificate
Energy Consumption kWh/1000 h	31 kWh

Product Data

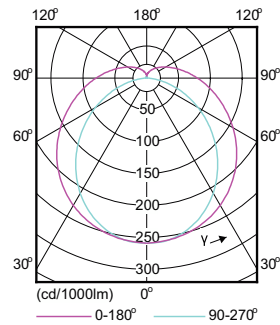
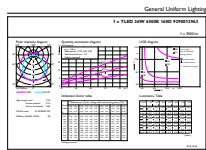
Order product name	MAS LEDtube HF 1500mm HO 26W 865 T5
Full product name	MAS LEDtube HF 1500mm HO 26W 865 T5
Full product code	871869668556300
Order code	929001296302
Material Nr. (12NC)	929001296302
Numerator - Quantity Per Pack	1
EAN/UPC - Product/Case	8718696685563
Numerator - Packs per outer box	10
EAN/UPC - Case	8718696685570

Dimensional drawing



Product	D1	D2	A1	A2	A3
MAS LEDtube HF 1500mm HO 26W 865 T5	15.2 mm	21 mm	1,447.8 mm	1,454.9 mm	1,462 mm

Photometric data



General uniform lighting - MAS LEDtube HF 1500mm HO 26W 865 T5

Light Distribution Diagram - MAS LEDtube HF 1500mm HO 26W 865 T5

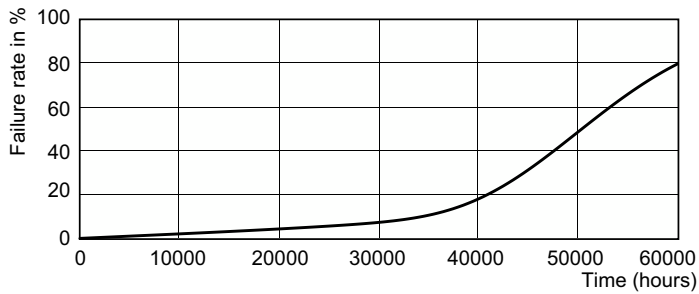
MASTER LEDtube InstantFit HF T5

Photometric data

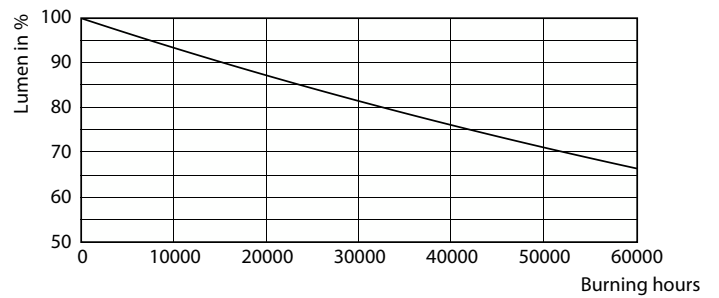


Spectral Power Distribution Colour - MAS LEDtube HF 1500mm HO 26W 865 T5

Lifetime



Life Expectancy Diagram - MAS LEDtube HF 1500mm HO 26W 865 T5



Lumen Maintenance Diagram - MAS LEDtube HF 1500mm HO 26W 865 T5

