



MASTER LEDtube EM/ Mains

MASTER LEDtube 600mm HO 8W840 T8

The Philips MASTER LEDtube integrates a LED light source into a traditional fluorescent form factor. Its unique design creates a perfectly uniform visual appearance which cannot be distinguished from traditional fluorescent. This product is the ideal solution for up lighting in general lighting applications.

Product data

General Information	
Cap base	G13 [Medium Bi-Pin Fluorescent]
Nominal lifetime (nom.)	60000 h
Switching cycle	200000X

Light Technical	
Colour code	840 [CCT of 4,000 K]
Beam Angle (Nom)	160 °
Luminous flux (nom.)	1050 lm
Correlated colour temperature (nom.)	4000 K
Luminous efficacy (rated) (nom.)	131.00 lm/W
Colour consistency	<6
Color rendering index (nom.)	83
LLMF at end of nominal lifetime (nom.)	70 %

Operating and Electrical	
Input frequency	50 to 60 Hz
Power (Rated) (Nom)	8 W
Lamp current (max.)	42 mA
Lamp current (min.)	36 mA

Starting time (nom.)	0.5 s
Warm-up time to 60% light (nom.)	0.5 s
Power factor (nom.)	0.9
Voltage (Nom)	220-240 V

Temperature	
T ambient (max.)	35 °C
T ambient (min.)	-20 °C
T storage (max.)	65 °C
T storage (min.)	-40 °C
T-Case maximum (nom.)	50 °C

Controls and Dimming	
Dimmable	No

Mechanical and Housing	
Bulb finish	Frosted
Product length	600 mm

MASTER LEDtube EM/Mains

Approval and Application

Energy efficiency label (EEL)	A++
Energy-saving product	Yes
Approval marks	RoHS compliance CE marking KEMA Keur certificate
Energy Consumption kWh/1000 h	8 kWh

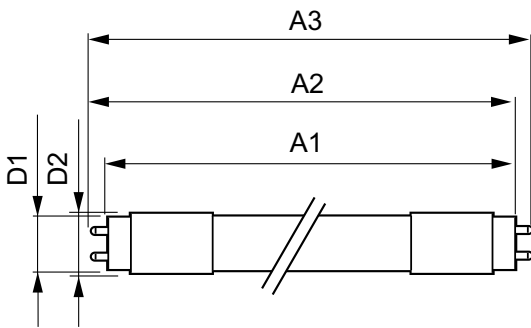
Product Data

Full product code	871869669749800
-------------------	-----------------

Order product name	MASTER LEDtube 600mm HO 8W840 T8
EAN/UPC – product	8718696697498
Order code	69749800
Numerator – quantity per pack	1
Numerator – packs per outer box	10
Material no. (12NC)	929001307102
Net weight (piece)	0.150 kg

Warnings and Safety

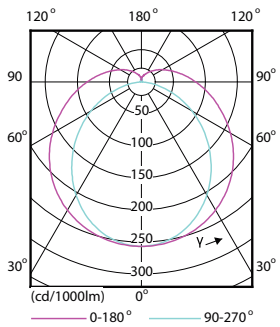
Dimensional drawing



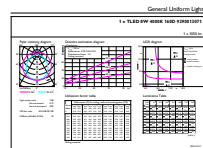
TLED 220-240V 8W-18W 1050lm 4000K G13

Product	D1	D2	A1	A2	A3
MASTER LEDtube 600mm HO 8W840 T8	25.78 mm	28 mm	588.5 mm	595.5 mm	602.5 mm

Photometric data



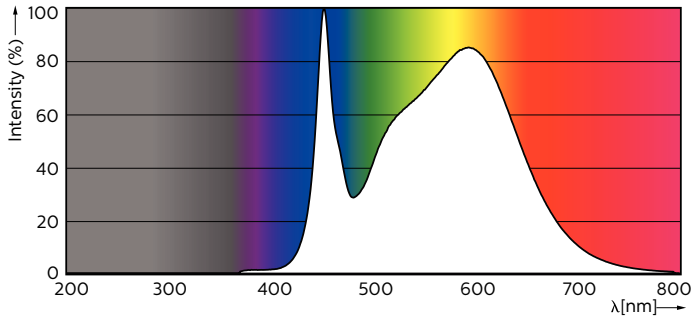
LEDtube 600mm 1200mm 1500mm UO T8



LEDtube 600mm HO 8W840 T8

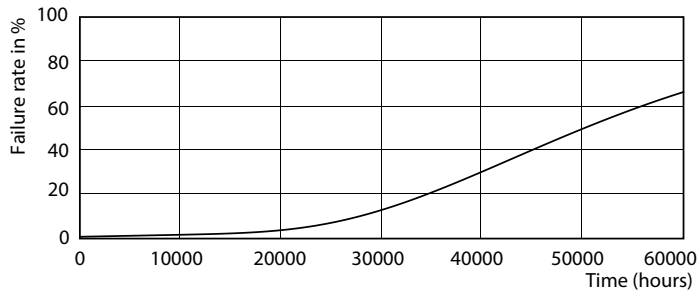
MASTER LEDtube EM/Mains

Photometric data

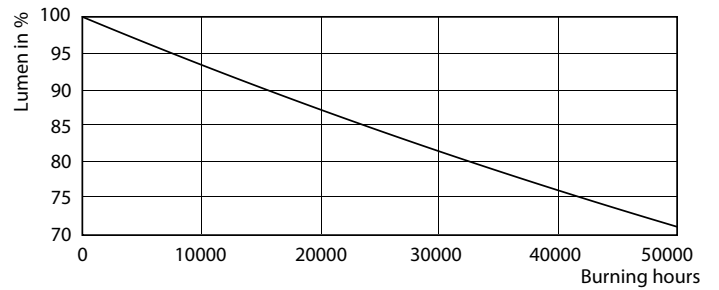


LEDtube 600mm HO 8W840 T8

Lifetime



LEDtube 600mm 1200mm 1500mm UO T8



LEDtube 600mm 1200mm 1500mm UO T8

