



MASTER LEDtube Universal T8

Master LEDtube Universal 1200mm UO 16W830 T8

The new Philips MASTER LEDtube Universal T8 brings ease and simplicity to your lighting project. That's because you do not need to match the driver technology anymore: a unique design enables the Philips MASTER LEDtube Universal T8 to directly fit in luminaires operating on either electromagnetic ballasts or HF electronic ballasts or mains power connection. It is so simple to operate and you no longer need to stock two types of tubes! Perfectly safe, reliable & easy to install Philips MASTER LEDtube Universal T8 is the ideal alternative to standard fluorescent tubes to maximize value over lifetime with high energy saving and lower maintenance costs.

Product data

| General Information | | Operating and Electrical | |
|---------------------------------------|----------------------------------|---------------------------------|-------------|
| Base | G13 [Medium Bi-Pin Fluorescent] | Input Frequency | 50 to 60 Hz |
| Main Application | Industrial | Power (Rated) (Nom) | 16 W |
| Nominal Lifetime (Nom) | 60000 h | Lamp Current (Nom) | 75 mA |
| Switching Cycle | 50000X | Starting Time (Nom) | 0.5 s |
| B50L70 | 60000 h | Warm Up Time to 60% Light (Nom) | 0.5 s |
| Light Technical | | Power Factor (Nom) | 0.9 |
| Color Code | 830 [CCT of 3000K] | Voltage (Nom) | 220-240 V |
| Initial lumen (Nom) | 2300 lm | Temperature | |
| Luminous Flux (Rated) (Nom) | 2300 lm | T-Ambient (Max) | 45 °C |
| Correlated Color Temperature (Nom) | 3000 K | T-Ambient (Min) | -20 °C |
| Color Consistency | <6 | T-Storage (Max) | 65 °C |
| Color Rendering Index (Nom) | 83 | T-Storage (Min) | -40 °C |
| LLMF At End Of Nominal Lifetime (Nom) | 70 % | T-Case Maximum (Nom) | 45 °C |

MASTER LEDtube Universal T8

Controls and Dimming

| | |
|----------|----|
| Dimmable | No |
|----------|----|

Mechanical and Housing

| | |
|----------------|---------|
| Bulb Material | Plastic |
| Product Length | 1200 mm |

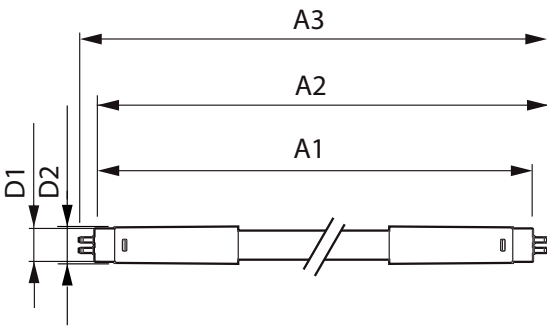
Approval and Application

| | |
|-------------------------------|--|
| Energy Efficiency Label (EEL) | A++ |
| Energy Saving Product | Yes |
| Approbation Marks | RoHS compliance TUV CE marking KEMA Keur certificate |
| Energy Consumption kWh/1000 h | 16 kWh |

Product Data

| | |
|---------------------------------|--|
| XUCDM.COPY.Product.Title | Master LEDtube Universal 1200mm UO 16W830 T8 |
| EAN/UPC - Product | 8718696728536 |
| Order code | 346569 |
| Numerator - Quantity Per Pack | 1 |
| Numerator - Packs per outer box | 10 |
| Material Nr. (12NC) | 929001336002 |
| Net Weight (Piece) | 0.270 kg |

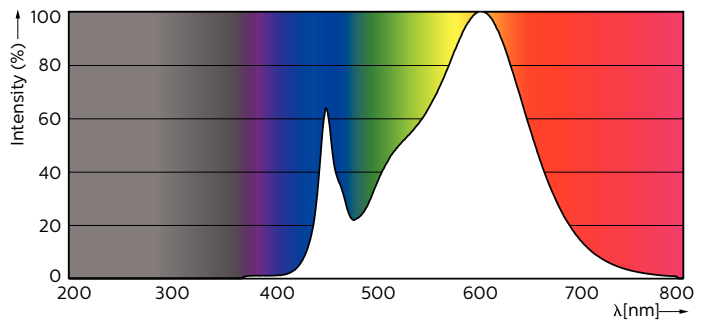
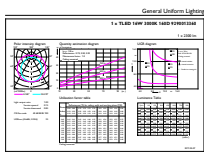
Dimensional drawing



TLED 16.5W-36W 2500lm 160D 3000K ND

| Product | D1 | D2 | A1 | A2 | A3 |
|--|---------|-------|-----------|-----------|-----------|
| Master LEDtube Universal 1200mm UO 16W830 T8 | 25.7 mm | 28 mm | 1199.4 mm | 1206.5 mm | 1213.6 mm |

Photometric data



LEDtube 1200mm 16W G13 830 2300lm

LEDtube 1200mm 16W G13 830 2300lm

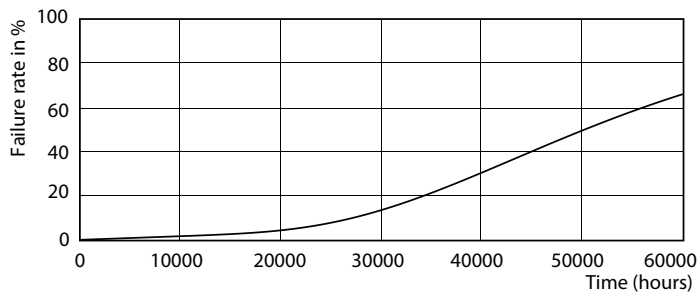
MASTER LEDtube Universal T8

Photometric data



LEDtube 1200mm 16W G13

Lifetime



LEDtube 1200mm 16W G13



LEDtube 1200mm 16W G13

