



MASTER LEDtube InstantFit HF T5

MAS LEDtube HF 1200mm HO 26W 865 T5

Philips MASTER LEDtube InstantFit T5 integrates a LED light source into a traditional fluorescent form factor. Its unique design creates a perfectly uniform visual appearance which cannot be distinguished from traditional fluorescents. The Philips MASTER LEDtube InstantFit T5 is the ideal solution for customers who have higher light output requirements and want to maximise value over the lifetime. The full energy savings & longer lifetime result in attractive payback times and TCO benefits.

Product data

| General Information | |
|-------------------------|----------|
| Cap base | G5 [G5] |
| Nominal lifetime (nom.) | 50000 h |
| Switching cycle | 50000X |
| B50L70 | 50000 h |

| Light Technical | |
|--|-----------------------|
| Colour code | 865 [CCT of 6,500 K] |
| Beam Angle (Nom) | 160 ° |
| Luminous flux (nom.) | 3900 lm |
| Luminous flux (rated) (nom.) | 3900 lm |
| Rated beam angle | 160 ° |
| Correlated colour temperature (nom.) | 6500 K |
| Colour consistency | <6 |
| Color rendering index (nom.) | 83 |
| LLMF at end of nominal lifetime (nom.) | 70 % |

| Operating and Electrical | |
|--------------------------|----------------|
| Input frequency | 35000-80000 Hz |

| | |
|----------------------------------|---------|
| Power (Rated) (Nom) | 26 W |
| Lamp current (max.) | 700 mA |
| Lamp current (min.) | 450 mA |
| Starting time (nom.) | 0.5 s |
| Warm-up time to 60% light (nom.) | 0.5 s |
| Voltage (Nom) | 50-60 V |

| Temperature | |
|------------------|--------|
| T ambient (max.) | 45 °C |
| T ambient (min.) | -20 °C |
| T storage (max.) | 65 °C |
| T storage (min.) | -40 °C |

| Controls and Dimming | |
|----------------------|----|
| Dimmable | No |

| Mechanical and Housing | |
|------------------------|---------|
| Product length | 1200 mm |

MASTER LEDtube InstantFit HF T5

Approval and Application

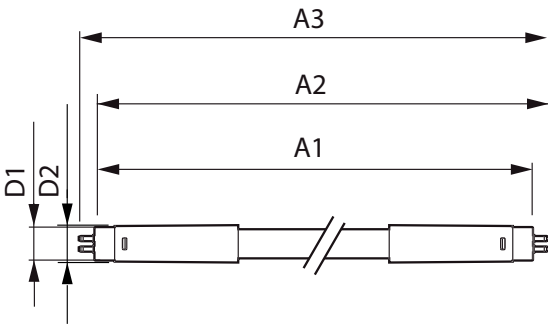
| | |
|-------------------------------|--|
| Energy efficiency label (EEL) | A++ |
| Energy-saving product | Yes |
| Approval marks | RoHS compliance CE marking KEMA Keur certificate |
| Energy Consumption kWh/1000 h | 31 kWh |

Product Data

| | |
|-------------------|-----------------|
| Full product code | 871869670531500 |
|-------------------|-----------------|

| | |
|---------------------------------|-------------------------------------|
| Order product name | MAS LEDtube HF 1200mm HO 26W 865 T5 |
| EAN/UPC – product | 8718696705315 |
| Order code | 70531500 |
| Numerator – quantity per pack | 1 |
| Numerator – packs per outer box | 10 |
| Material no. (12NC) | 929001338502 |
| Net weight (piece) | 0.155 kg |

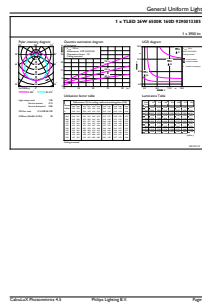
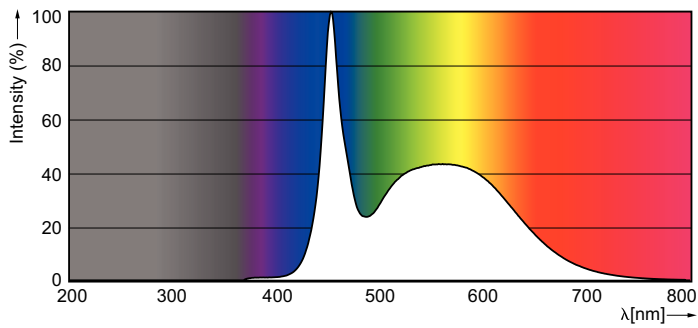
Dimensional drawing



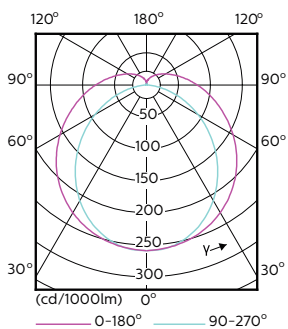
TLED 1200mm 26-49W 3900lm 6500K G5 ND

| Product | D1 | D2 | A1 | A2 | A3 |
|-------------------------------------|---------|-------|-----------|-----------|---------|
| MAS LEDtube HF 1200mm HO 26W 865 T5 | 15.2 mm | 21 mm | 1147.8 mm | 1154.9 mm | 1162 mm |

Photometric data

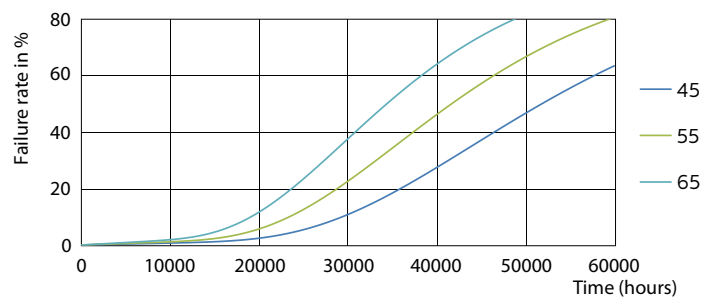
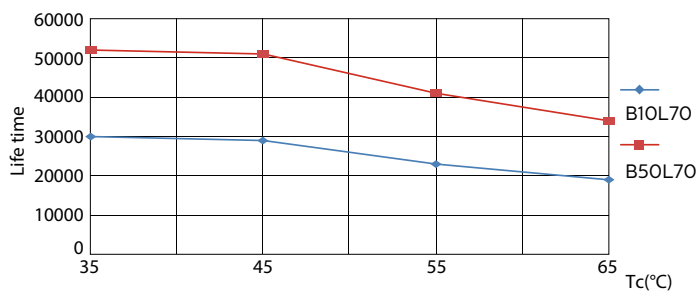
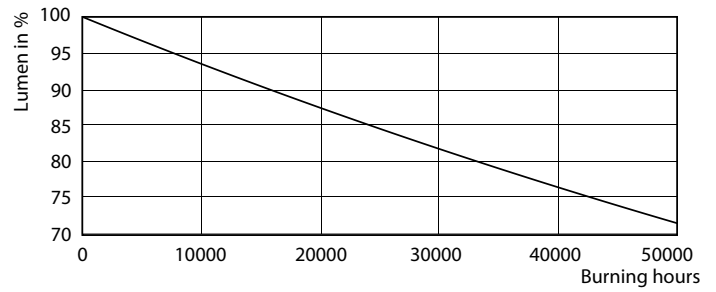
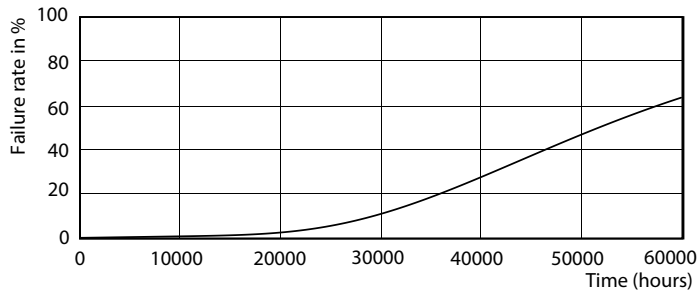


LEDtube 1200mm 26W G5 865 3900lm



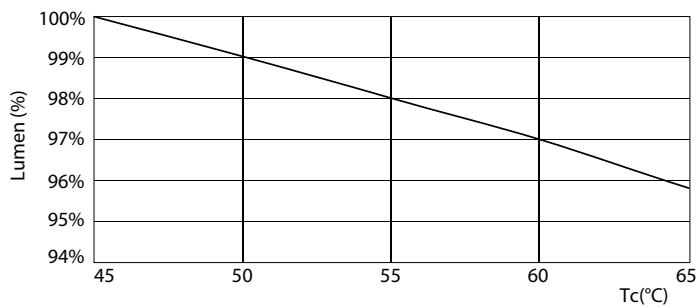
MASTER LEDtube InstantFit HF T5

Lifetime



LEDtube 1200mm 26W G5 3900lm

LEDtube 1200mm 26W G5 3900lm



LEDtube 1200mm 26W G5 3900lm

