



T8

14T8/COR/48-840/IF21/G 10/1

Our TLEDs are available in InstantFit (Type A / Type C) or MainsFit (Ballast bypass / Type B) versions. The InstantFit lamps work on a broad variety of ballasts and LED drivers. Only InstantFit has over 15,000 lamp & ballast combinations delivering even light output, energy savings and a long lifetime. Our MainsFit products feature a double-ended design, simplifying installation while a proprietary safety circuit minimizes a shock risk. Lamp sizes range from 2-foot to 8-foot and U-bend with a variety of lumen outputs.

Product data

| General Information | |
|---------------------------------------|----------------------------------|
| Cap-Base | G13 [Medium Bi-Pin Fluorescent] |
| EU RoHS compliant | Yes |
| Nominal Lifetime (Nom) | 50000 h |
| Switching Cycle | 50000X |
| Light Technical | |
| Color Code | 840 [CCT of 4000K] |
| Luminous Flux (Nom) | 2100 lm |
| Correlated Color Temperature (Nom) | 4000 K |
| Color Consistency | <6 |
| Color Rendering Index (Nom) | 82 |
| LLMF At End Of Nominal Lifetime (Nom) | 70 % |
| Operating and Electrical | |
| Input Frequency | 25000-105000 Hz |
| Power (Nom) | 14 W |
| Lamp Current (Max) | 260 mA |
| Lamp Current (Min) | 100 mA |
| Starting Time (Nom) | 0.5 s |

| Warm Up Time to 60% Light (Nom) | 0.5 s |
|---------------------------------|----------------|
| Power Factor (Nom) | 0.9 |
| Voltage (Nom) | 120-277, 347 V |
| Temperature | |
| T-Ambient (Max) | 45 °C |
| T-Ambient (Min) | -20 °C |
| T-Storage (Max) | 65 °C |
| T-Storage (Min) | -40 °C |
| T-Case Maximum (Nom) | 50 °C |
| Controls and Dimming | |
| Dimmable | No |
| Mechanical and Housing | |
| Product Length | 1200 mm |
| Approval and Application | |
| Energy Efficiency Label (EEL) | Not applicable |
| Energy Saving Product | Yes |

T8

| | |
|---|---|
| Approval Marks | UL certificate RoHS compliance DLC compliance |
| Energy Certifications | DLC Standard |
| DesignLights Consortium Qualified Product List | - |
| Product Data | |
| Order product name | 14T8/COR/48-840/IF21/G 10/1 |
| EAN/UPC - Product | 046677537807 |

| | |
|--|--------------|
| Order code | 929001343264 |
| Numerator - Quantity Per Pack | 1 |
| Numerator - Packs per outer box | 10 |
| Material Nr. (12NC) | 929001343264 |
| Net Weight (Piece) | 0.208 kg |

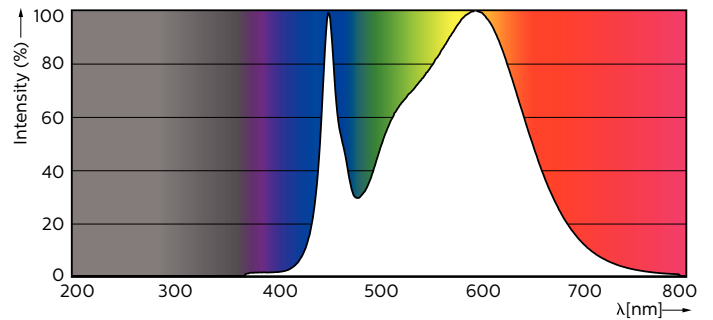
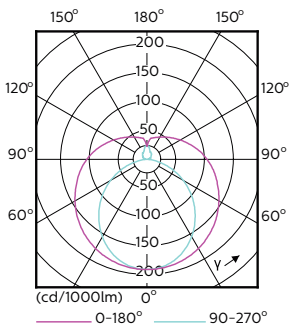
Dimensional drawing

A3

| Product | D1 | D2 | A1 | A2 | A3 |
|-----------------------------|---------|-------|---------|---------|---------|
| 14T8/COR/48-840/IF21/G 10/1 | 25.7 mm | 28 mm | 1198 mm | 1205 mm | 1212 mm |

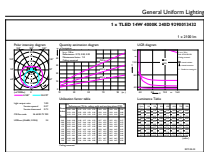
14T8 PRO LED/48-4000 IF G 10/1

Photometric data



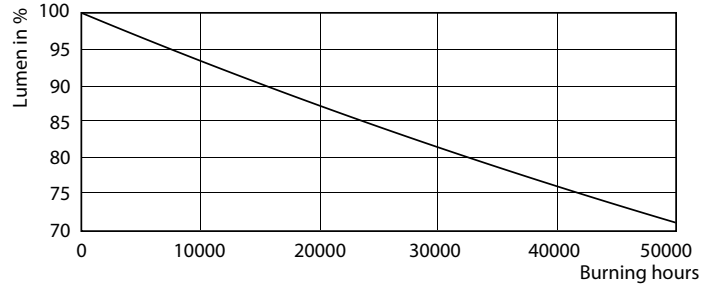
LEDtube 1200mm 17W G13 2100lm

LEDtube PRO 1200mm 14W G13 840 2100lm



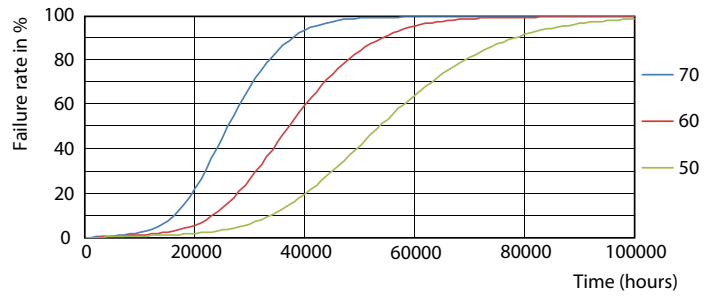
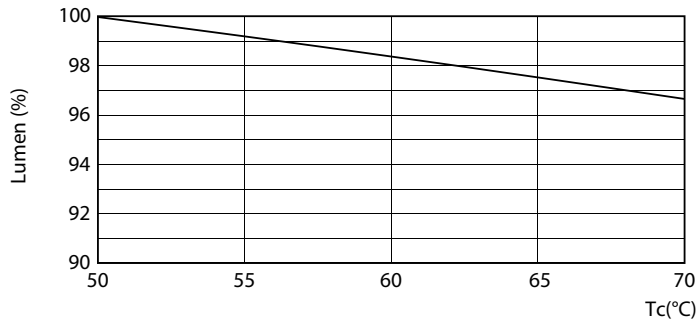
LEDtube PRO 1200mm 14W G13 840 2100lm

Lifetime



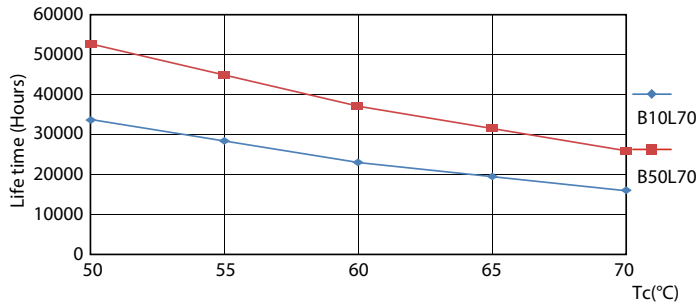
LEDtube PRO 1200mm 14W G13 2000lm

LEDtube PRO 1200mm 14W G13 2000lm



12W G13

12W G13



12W G13

