



MASTER LEDtube InstantFit HF T5

Master LEDtube HF 1500mm UO 36W 830 T5

Philips MASTER LEDtube InstantFit T5 integrates a LED light source into a traditional fluorescent form factor. Its unique design creates a perfectly uniform visual appearance which cannot be distinguished from traditional fluorescent. The Philips MASTER LEDtube InstantFit T5 is the ideal solution for customers who have higher light output requirements and want to maximize value over lifetime. Full energy savings & longer lifetime result in attractive payback times and TCO benefits.

Product data

| General Information | | Lamp Current (Min) | |
|---------------------------------------|---------------------|---------------------------------|--|
| Cap-Base | G5 [G5] | 550 mA | |
| EU RoHS compliant | Yes | Starting Time (Nom) | |
| Nominal Lifetime (Nom) | 50000 h | 0.5 s | |
| Switching Cycle | 50000X | Warm Up Time to 60% Light (Nom) | |
| | | 0.5 s | |
| | | Voltage (Nom) | |
| | | 65-75 V | |
| Light Technical | | Temperature | |
| Color Code | 830 [CCT of 3000K] | T-Ambient (Max) | |
| Beam Angle (Nom) | 160 ° | 45 °C | |
| Luminous Flux (Nom) | 5200 lm | T-Ambient (Min) | |
| Correlated Color Temperature (Nom) | 3000 K | -20 °C | |
| Color Consistency | <6 | T-Storage (Max) | |
| Color Rendering Index (Nom) | 83 | 65 °C | |
| LLMF At End Of Nominal Lifetime (Nom) | 70 % | T-Storage (Min) | |
| | | -40 °C | |
| Operating and Electrical | | Controls and Dimming | |
| Input Frequency | 40000-75000 Hz | Dimmable | |
| Power (Nom) | 36 W | No | |
| Lamp Current (Max) | 750 mA | | |
| | | Mechanical and Housing | |
| | | Bulb Material | |
| | | Plastic | |
| | | Product Length | |
| | | 1500 mm | |

MASTER LEDtube InstantFit HF T5

Approval and Application

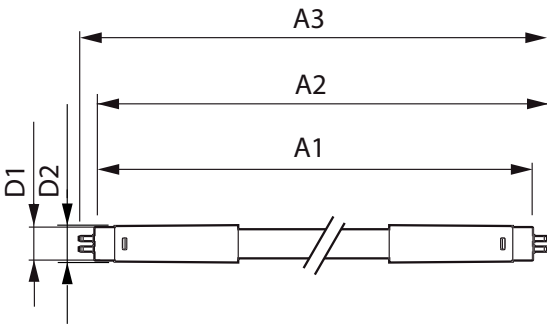
| | |
|-------------------------------|--|
| Energy Efficiency Label (EEL) | A++ |
| Energy Saving Product | Yes |
| Approval Marks | RoHS compliance TUV CE marking KEMA Keur certificate |
| Energy Consumption kWh/1000 h | 42 kWh |

Product Data

| | |
|-------------------|-----------------|
| Full product code | 871869670599500 |
|-------------------|-----------------|

| | |
|---------------------------------|--|
| Order product name | Master LEDtube HF 1500mm UO 36W 830 T5 |
| EAN/UPC - Product | 8718696705995 |
| Order code | 929001346102 |
| Numerator - Quantity Per Pack | 1 |
| Numerator - Packs per outer box | 10 |
| Material Nr. (12NC) | 929001346102 |
| Net Weight (Piece) | 0.170 kg |

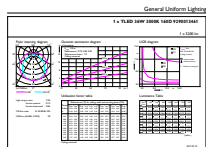
Dimensional drawing



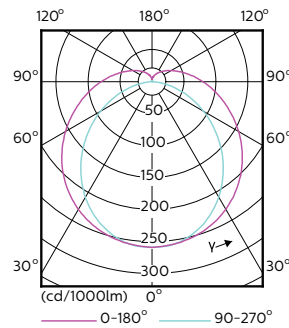
TLED 230V 37-80W 5600lm 160D 3000K G5 ND

| Product | D1 | D2 | A1 | A2 | A3 |
|--|---------|-------|-----------|-----------|---------|
| Master LEDtube HF 1500mm UO 36W 830 T5 | 15.2 mm | 21 mm | 1447.8 mm | 1454.9 mm | 1462 mm |

Photometric data



General Information 14 Recycling 14 Page 14

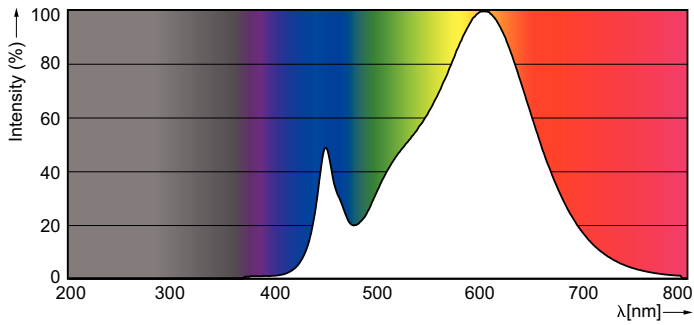


LEDtube 1500mm 36W G5 830 5200lm

LEDtube 1200mm 26W G5

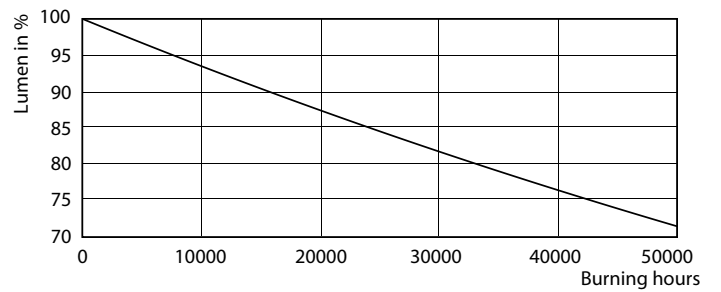
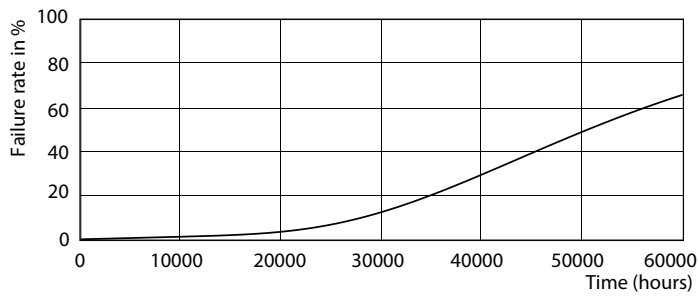
MASTER LEDtube InstantFit HF T5

Photometric data



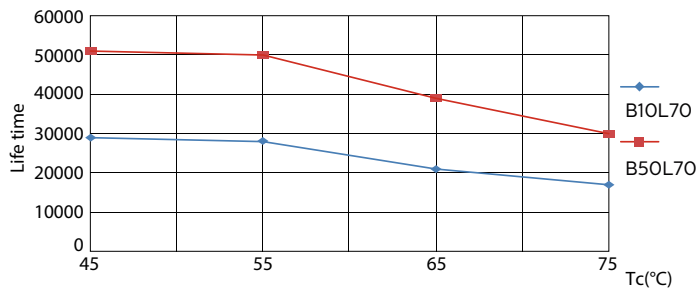
SDPO_MLEDGA_0039-Spectral Power distribution

Lifetime



LEDtube 1500mm 36W G5 5600lm

LEDtube 1500mm 36W G5 5600lm



LEDtube 1500mm 36W G5 5600lm

LEDtube 1200mm 26W G5 3900lm

MASTER LEDtube InstantFit HF T5

Lifetime

LEDtube 1500mm 36W G5 5600lm

