



# MASTER LEDtube EM/ Mains

## MASTER LEDtube 1200mm UE 14.5W 840 T8

The Philips MASTER LEDtube integrates a LED light source into a traditional fluorescent form factor. Its unique design creates a perfectly uniform visual appearance which cannot be distinguished from traditional fluorescent. This product is the ideal solution for up lighting in general lighting applications.

### Product data

General Information	
Cap base	G13 [ Medium Bi-Pin Fluorescent]
Nominal lifetime (nom.)	70000 h
Switching cycle	200000X

Light Technical	
Colour Code	840 [ CCT of 4,000 K]
Beam Angle (Nom)	160 °
Lamp Luminous Flux 25°C EL (Nom)	2500 lm
Colour Temperature, horizontal (Nom)	4000 K
Colour consistency	<6
Colour Rendering Index,horiz (Nom)	83
LLMF at end of nominal lifetime (nom.)	70 %

Operating and Electrical	
Input frequency	50 to 60 Hz
Power (Rated) (Nom)	14.5 W
Lamp current (max.)	74 mA
Lamp current (min.)	56 mA
Starting time (nom.)	0.5 s

Warm-up time to 60% light (nom.)	0.5 s
Power factor (nom.)	0.9
Voltage (Nom)	220-240 V

Temperature	
T ambient (max.)	35 °C
T ambient (min.)	-20 °C
T storage (max.)	65 °C
T storage (min.)	-40 °C
T-Case maximum (nom.)	55 °C

Controls and Dimming	
Dimmable	No

Mechanical and Housing	
Product length	1200 mm

Approval and Application	
Energy efficiency label (EEL)	A++
Energy-saving product	Yes

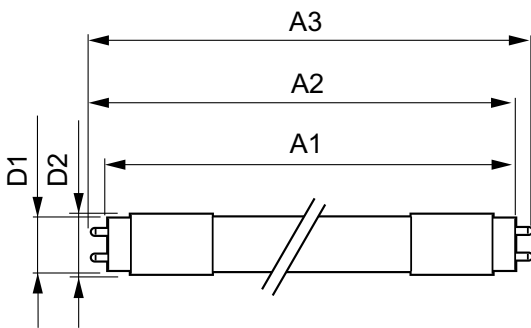
# MASTER LEDtube EM/Mains

Approval marks	CE marking RoHS compliance KEMA Keur certificate
Energy Consumption kWh/1000 h	15 kWh
<b>Product Data</b>	
Full product code	871869673150500
Order product name	MASTER LEDtube 1200mm UE 14.5W 840 T8
EAN/UPC – product	8718696731505

Order code	929001376802
Numerator – quantity per pack	1
Numerator – packs per outer box	10
Material no. (12NC)	929001376802
Net weight (piece)	0.270 kg

## Warnings and Safety

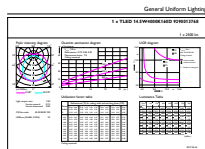
## Dimensional drawing



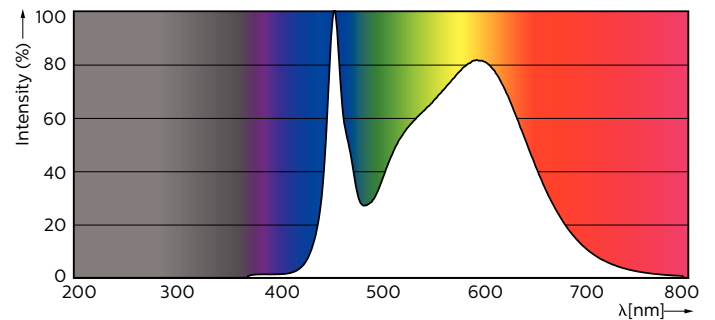
TLED 4ft 14.5-36W 2500lm 4000K G13 ND

Product	D1	D2	A1	A2	A3
MASTER LEDtube 1200mm UE 14.5W 840 T8	25.8 mm	28 mm	1198.2 mm	1205.3 mm	1212.4 mm

## Photometric data



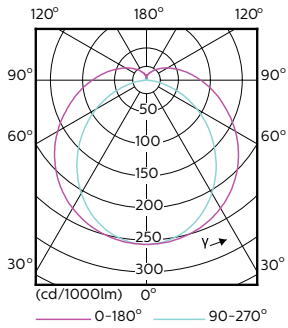
LEDtube 1200mm 15W G13 840 2500lm



LEDtube 1200mm 15W G13 840 2500lm

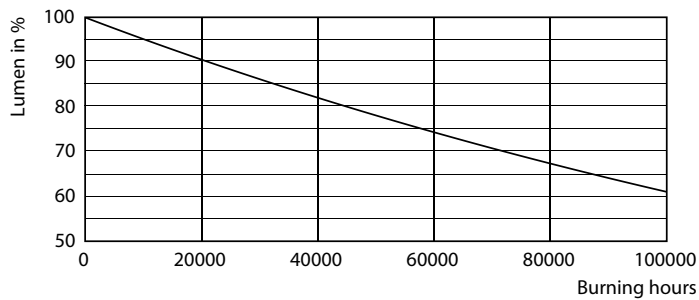
# MASTER LEDtube EM/Mains

## Photometric data

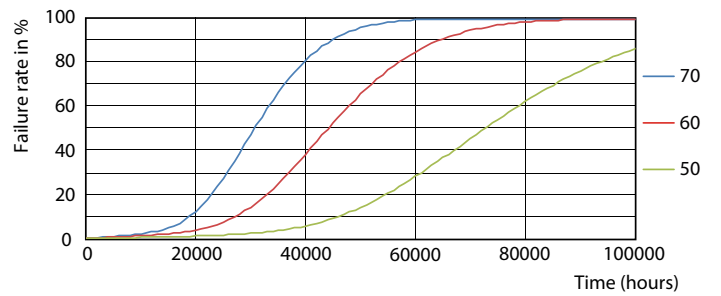


LEDtube 1200mm 15W G13 840 2500lm

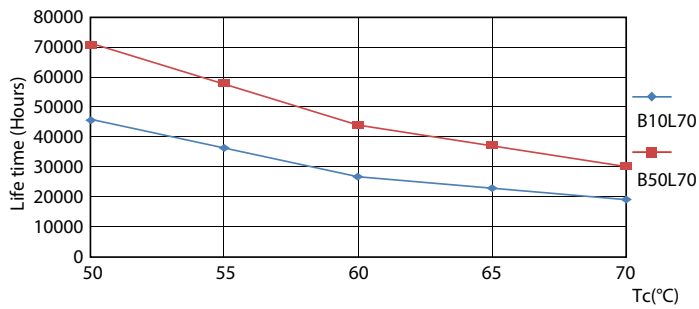
## Lifetime



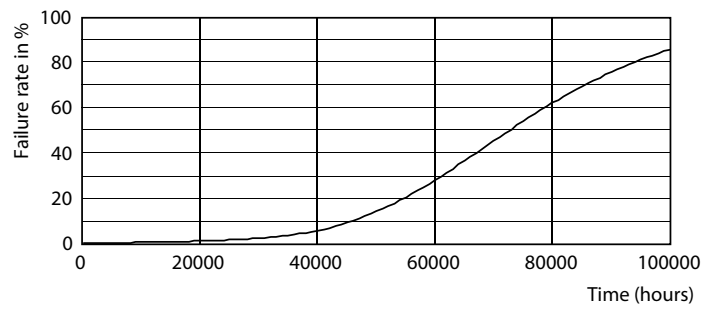
LEDtube G13 ND



LEDtube G13 ND FailureRate



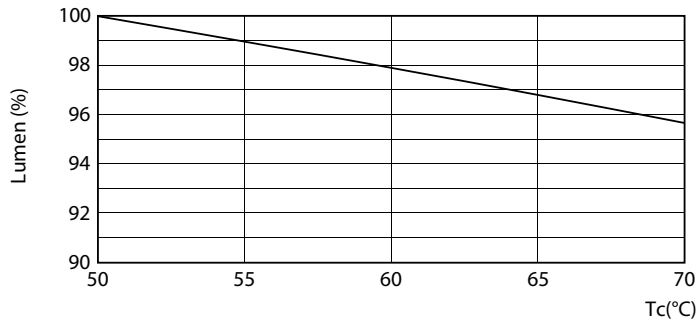
LEDtube G13 ND LifetimeVsTc



LEDtube G13 ND

# MASTER LEDtube EM/Mains

## Lifetime



LEDtube G13 14.5W ND LumenVsTc

