



# MASTER LEDtube EM/ Mains T8

## MASTER LEDtube 1200mm UE 14.5W 865 T8

The Philips MASTER LEDtube integrates a LED light source into a traditional fluorescent form factor. Its unique design creates a perfectly uniform visual appearance which cannot be distinguished from traditional fluorescent. For those that are looking for value for money within limited budget and re-lamping efforts for better light effect and lifetime.

### Product data

General Information	
Cap-Base	G13 [ Medium Bi-Pin Fluorescent]
RoHS mark	RoHS mark
Nominal Lifetime (Nom)	70000 h
Switching Cycle	200000X
B50L70	70000 h h
Light Technical	
Color Code	865 [ CCT of 6500K]
Beam Angle (Nom)	160 °
Luminous Flux (Nom)	2500 lm
Luminous Flux (Rated) (Nom)	2500 lm
Rated Beam Angle	160 °
Correlated Color Temperature (Nom)	6500 K
Color Consistency	<6
Color Rendering Index (Nom)	83
LLMF At End Of Nominal Lifetime (Nom)	70 %
Operating and Electrical	
Input Frequency	50 to 60 Hz

Power (Nom)	14.5 W
Lamp Current (Max)	74 mA
Lamp Current (Min)	56 mA
Starting Time (Nom)	0.5 s
Warm Up Time to 60% Light (Nom)	0.5 s
Power Factor (Nom)	0.9
Voltage (Nom)	220-240 V
Temperature	
T-Ambient (Max)	35 °C
T-Ambient (Min)	-20 °C
T-Storage (Max)	65 °C
T-Storage (Min)	-40 °C
T-Case Maximum (Nom)	55 °C
Controls and Dimming	
Dimmable	No
Mechanical and Housing	
Bulb Material	Plastic

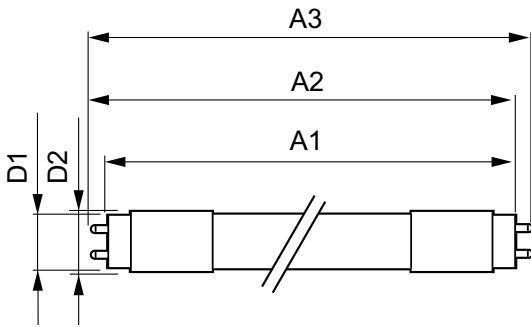
# MASTER LEDtube EM/Mains T8

Product Length	1200 mm
<b>Approval and Application</b>	
Energy Efficiency Label (EEL)	A++
Energy Saving Product	Yes
Approval Marks	TUV CE marking RoHS compliance KEMA Keur certificate
Energy Consumption kWh/1000 h	15 kWh
<b>Product Data</b>	
Full product code	871869673152900

Order product name	MASTER LEDtube 1200mm UE 14.5W 865 T8
EAN/UPC - Product	8718696731529
Order code	929001376902
Numerator - Quantity Per Pack	1
Numerator - Packs per outer box	10
Material Nr. (12NC)	929001376902
Net Weight (Piece)	0.270 kg

## Warnings and Safety

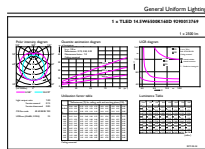
### Dimensional drawing



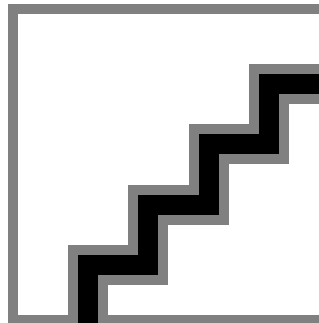
TLED 4ft 14.5-36W 2500lm 6500K G13 ND

Product	D1	D2	A1	A2	A3
MASTER LEDtube 1200mm UE 14.5W 865 T8	25.8 mm	28 mm	1198.2 mm	1205.3 mm	1212.4 mm

## Photometric data



LEDtube 1200mm 15W G13 865 2500lm



LEDtube 1200mm 15W G13 865 2500lm

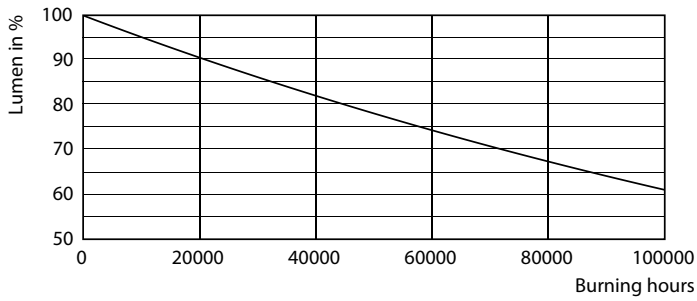
# MASTER LEDtube EM/Mains T8

## Photometric data

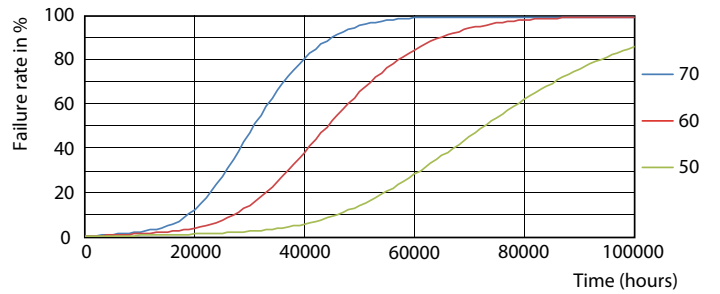


LEDtube 1200mm 15W G13 840 2500lm

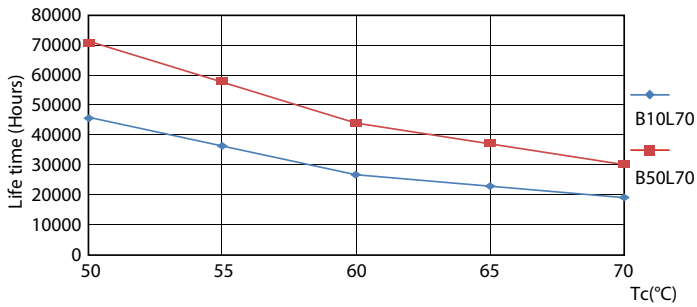
## Lifetime



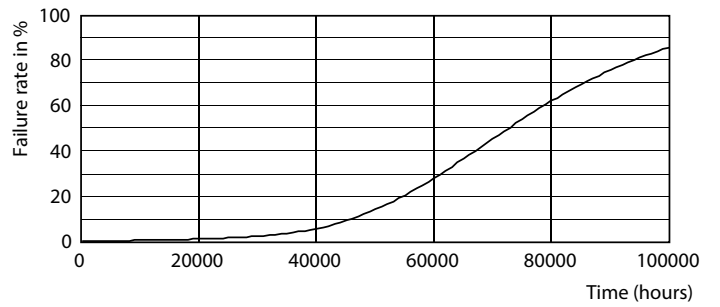
LEDtube G13 ND



LEDtube G13 ND FailureRate



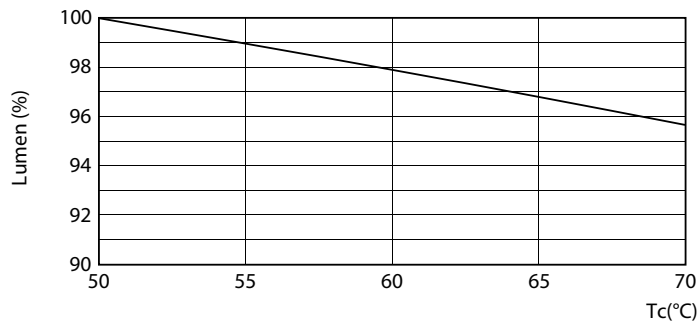
LEDtube G13 ND LifetimeVsTc



LEDtube G13 ND

# MASTER LEDtube EM/Mains T8

## Lifetime



LEDtube G13 14.5W ND LumenVsTc

