



# MASTER LEDtube EM/ Mains

## MASTER LEDtube 1500mm UE 21.5W 840 T8

The Philips MASTER LEDtube integrates a LED light source into a traditional fluorescent form factor. Its unique design creates a perfectly uniform visual appearance which cannot be distinguished from traditional fluorescent. For those that are looking for value for money within limited budget and re-lamping efforts for better light effect and lifetime.

### Product data

General Information	
Cap base	G13 [ Medium Bi-Pin Fluorescent]
EU RoHS compliant	Yes
Nominal lifetime (nom.)	70000 h
Switching cycle	200000X

Light Technical	
Colour code	841 [ CCT of 4100K (841)]
Beam Angle (Nom)	160 °
Luminous flux (nom.)	3700 lm
Correlated Colour Temperature (Nom)	4000 K
Colour consistency	<6
Color rendering index (nom.)	83
LLMF at end of nominal lifetime (nom.)	70 %

Operating and Electrical	
Input frequency	50 to 60 Hz
Power (Rated) (Nom)	21.5 W
Lamp current (max.)	111 mA
Lamp current (min.)	83 mA

Starting time (nom.)	0.5 s
Warm-up time to 60% light (nom.)	0.5 s
Power factor (nom.)	0.9
Voltage (Nom)	220-240 V

Temperature	
T ambient (max.)	35 °C
T ambient (min.)	-20 °C
T storage (max.)	65 °C
T storage (min.)	-40 °C
T-Case maximum (nom.)	60 °C

Controls and Dimming	
Dimmable	No

Mechanical and Housing	
Bulb material	Plastic
Product length	1500 mm

# MASTER LEDtube EM/Mains

## Approval and Application

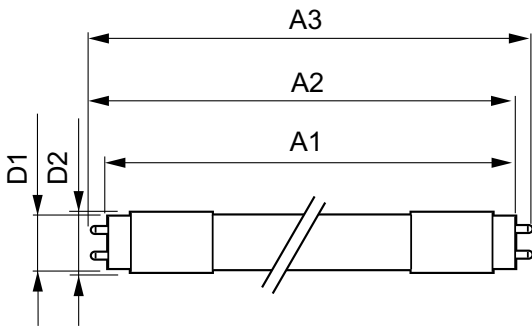
Energy efficiency label (EEL)	A++
Energy-saving product	Yes
Approval marks	CE marking RoHS compliance KEMA Keur certificate
Energy Consumption kWh/1000 h	22 kWh

## Product Data

Full product code	871869673154300
-------------------	-----------------

Order product name	MASTER LEDtube 1500mm UE 21.5W 840 T8
EAN/UPC – product	8718696731543
Order code	73154300
Numerator – quantity per pack	1
Numerator – packs per outer box	10
Material no. (12NC)	929001377002
Net weight (piece)	0.270 kg

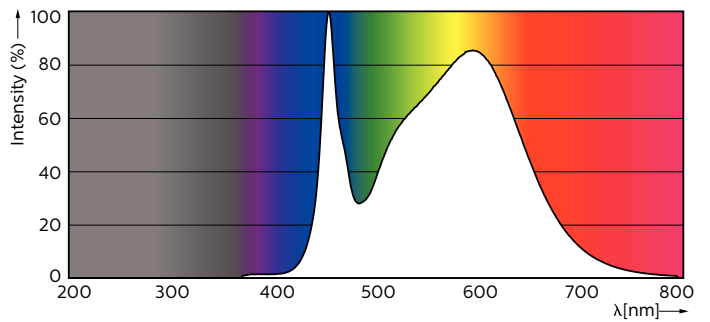
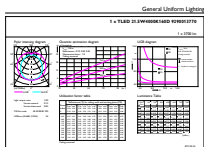
## Dimensional drawing



TLED 5ft 21.5-58W 3700lm 4000K G13 ND

Product	D1	D2	A1	A2	A3
MASTER LEDtube 1500mm UE 21.5W 840 T8	25.8 mm	28 mm	1498.8 mm	1505.9 mm	1513 mm

## Photometric data

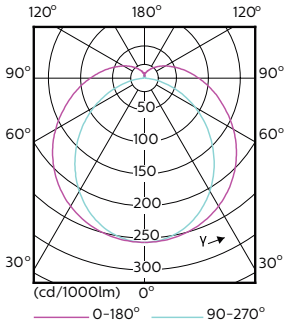


LEDtube 1500mm 22W G13 840 3700lm

LEDtube 1500mm 22W G13 840 3700lm

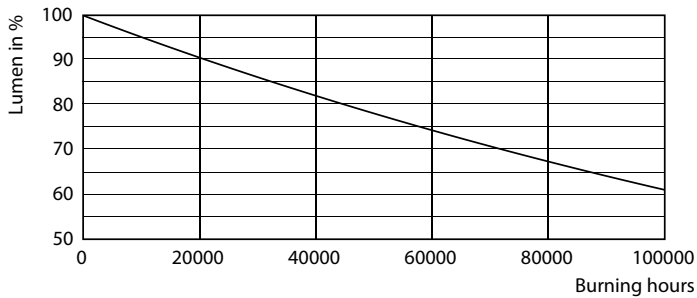
# MASTER LEDtube EM/Mains

## Photometric data

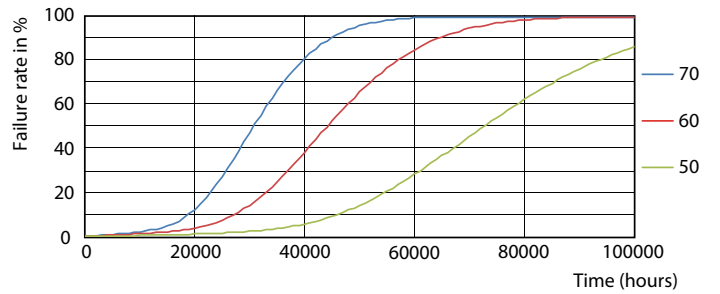


LEDtube 1200mm 15W G13 840 2500lm

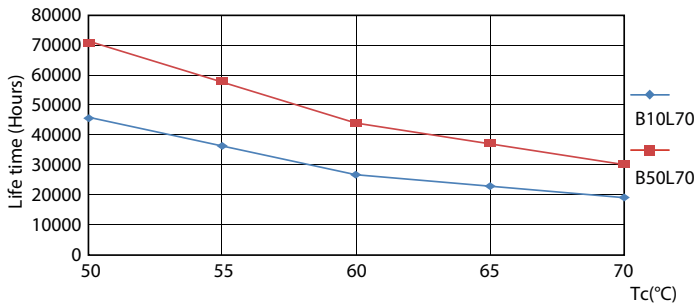
## Lifetime



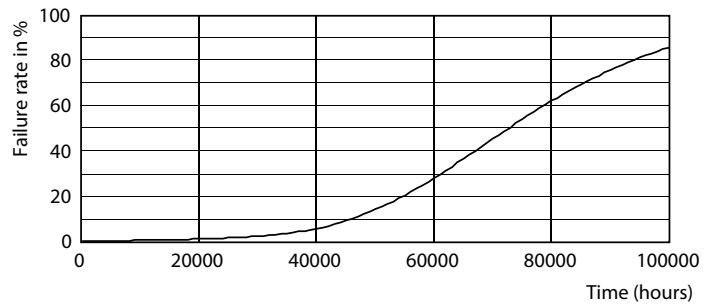
LEDtube G13 ND



LEDtube G13 ND FailureRate



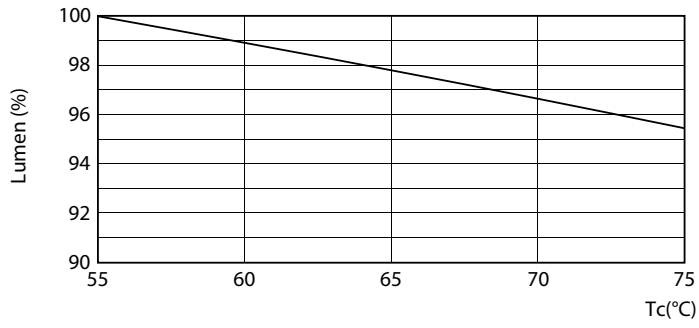
LEDtube G13 ND LifetimeVsTc



LEDtube G13 ND

# MASTER LEDtube EM/Mains

## Lifetime



LEDtube G13 21.5W ND LumenVsTc

