

MASTER LEDtube InstantFit HF T8

MASTER LEDtube HF 600mm HO 8W840 T8

Philips MASTER LEDtube InstantFit T8 integrates a LED light source into a traditional fluorescent form factor. Its unique design creates a perfectly uniform visual appearance which cannot be distinguished from traditional fluorescent. Philips MASTER LEDtube InstantFit T8 is the ideal solution for customers who have higher light requirements and want to maximize value over lifetime.; Full energy savings & longer lifetime result in attractive payback times and TCO benefits.

Product data

| General Information | |
|------------------------|----------------------------------|
| Cap-Base | G13 [Medium Bi-Pin Fluorescent] |
| EU RoHS compliant | Yes |
| Nominal Lifetime (Nom) | 60000 h |
| Switching Cycle | 50000X |

| Light Technical | |
|---------------------------------------|---------------------|
| Color Code | 840 [CCT of 4000K] |
| Beam Angle (Nom) | 160 ° |
| Luminous Flux (Nom) | 1050 lm |
| Correlated Color Temperature (Nom) | 4000 K |
| Color Consistency | <6 |
| Color Rendering Index (Nom) | 83 |
| LLMF At End Of Nominal Lifetime (Nom) | 70 % |

| Operating and Electrical | |
|--------------------------|----------------|
| Input Frequency | 20000-80000 Hz |
| Power (Nom) | 8 W |
| Lamp Current (Max) | 500 mA |

| | |
|---------------------------------|---------|
| Lamp Current (Min) | 150 mA |
| Starting Time (Nom) | 0.5 s |
| Warm Up Time to 60% Light (Nom) | 0.5 s |
| Power Factor (Nom) | 0.9 |
| Voltage (Nom) | 20-50 V |

| Temperature | |
|----------------------|--------|
| T-Ambient (Max) | 45 °C |
| T-Ambient (Min) | -20 °C |
| T-Storage (Max) | 65 °C |
| T-Storage (Min) | -40 °C |
| T-Case Maximum (Nom) | 60 °C |

| Controls and Dimming | |
|----------------------|----|
| Dimmable | No |

| Mechanical and Housing | |
|------------------------|---------|
| Bulb Material | Plastic |

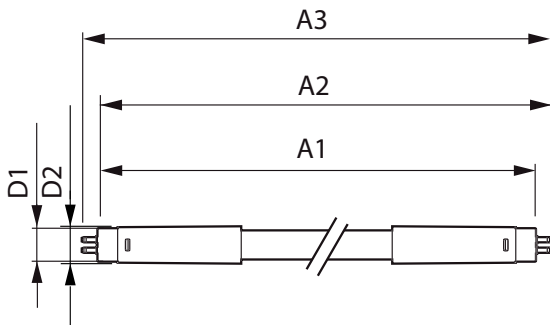
MASTER LEDtube InstantFit HF T8

| | |
|---------------------------------|--|
| Product Length | 600 mm |
| Approval and Application | |
| Energy Efficiency Label (EEL) | A+ |
| Energy Saving Product | Yes |
| Approval Marks | RoHS compliance TUV CE marking KEMA Keur certificate |
| Energy Consumption kWh/1000 h | 10 kWh |
| Product Data | |
| Full product code | 871869674355300 |

| | |
|---------------------------------|-------------------------------------|
| Order product name | MASTER LEDtube HF 600mm HO 8W840 T8 |
| EAN/UPC - Product | 8718696743553 |
| Order code | 929001393202 |
| Numerator - Quantity Per Pack | 1 |
| Numerator - Packs per outer box | 10 |
| Material Nr. (12NC) | 929001393202 |
| Net Weight (Piece) | 0.160 kg |

Warnings and Safety

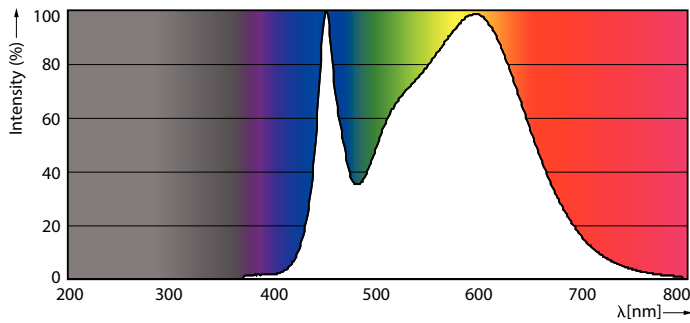
Dimensional drawing



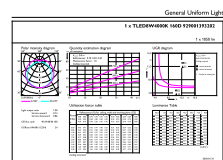
MAS LEDtube HF 600mm 10.5W840 T8

| Product | D1 | D2 | A1 | A2 | A3 |
|--|---------|-------|----------|----------|----------|
| MASTER LEDtube HF 600mm HO 8W840 T8 | 25.6 mm | 28 mm | 588.6 mm | 595.7 mm | 602.8 mm |

Photometric data



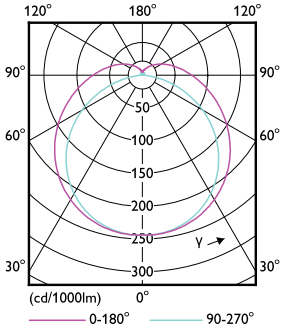
8W G13



8W G13 840 4000K

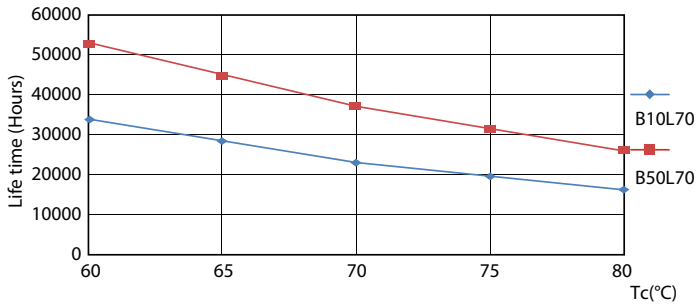
MASTER LEDtube InstantFit HF T8

Photometric data

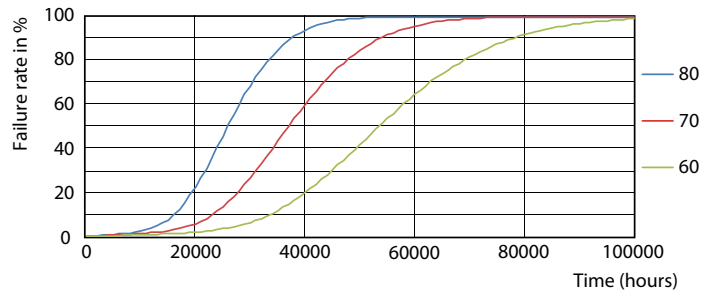


8W G13 830 3000K

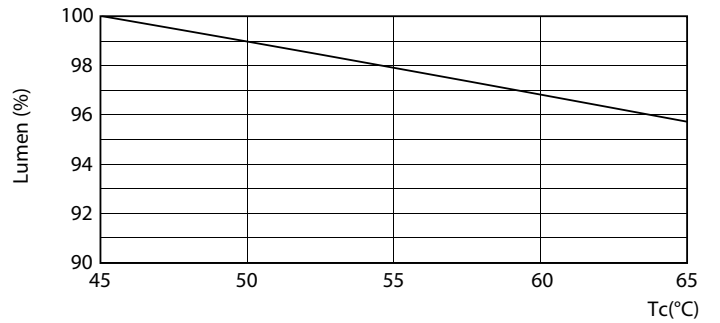
Lifetime



8W G13



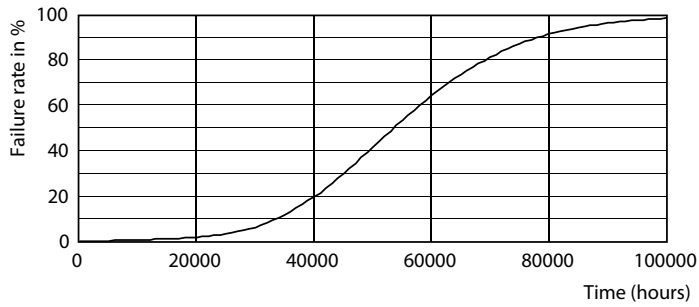
8W G13



8W G13

MASTER LEDtube InstantFit HF T8

Lifetime



8W G13

