



MasterConnect LEDtube InstantFit T8

15T8 LED/24-5000 IF 6U EasySmart 1PK10/1

Philips MasterConnect LEDtube InstantFit T8 lamp, which is Interact Ready, enables an easy upgrade to a connected lighting system without re-wiring the fixtures. The 2.4GHz mesh networking technology allows integration with a variety of control device, such as sensor and switch. It also offers secure and reliable communication towards the Interact IoT platform or verified third party systems. The result? Greater energy savings, various control possibilities and a more adaptable space!

Product data

General Information	
Base	G13 [Medium Bi-Pin Fluorescent]
Main Application	Industrial
Nominal Lifetime (Nom)	50000 h
Switching Cycle	50000X
B50L70	50000 h
Light Technical	
Color Code	850 [CCT of 5000K]
Beam Angle (Nom)	160 °
Initial lumen (Nom)	2100 lm
Luminous Flux (Rated) (Nom)	2100 lm
Rated Beam Angle	160 °
Correlated Color Temperature (Nom)	5000 K
Color Consistency	<6
Color Rendering Index (Nom)	80
LLMF At End Of Nominal Lifetime (Nom)	70 %

Operating and Electrical	
Input Frequency	40000-80000 Hz
Power (Rated) (Nom)	15 W
Lamp Current (Max)	350 mA
Lamp Current (Min)	120 mA
Starting Time (Nom)	0.5 s
Warm Up Time to 60% Light (Nom)	0.5 s
Power Factor (Nom)	0.9
Voltage (Nom)	160-380 V
Temperature	
T-Ambient (Max)	45 °C
T-Ambient (Min)	-20 °C
T-Storage (Max)	65 °C
T-Storage (Min)	-40 °C
T-Case Maximum (Nom)	40 °C

MasterConnect LEDtube InstantFit T8

Controls and Dimming

Dimmable	Wireless Dim
----------	--------------

Mechanical and Housing

Product Length	600 mm
----------------	--------

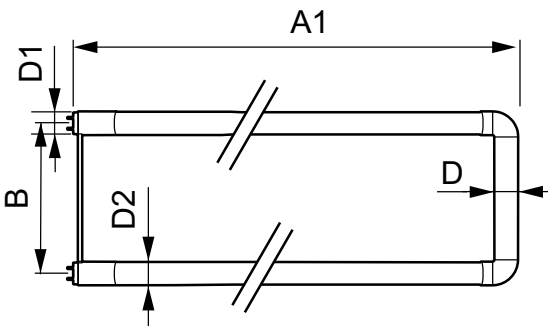
Approval and Application

Energy Saving Product	Yes
Approbation Marks	UL certificate RoHS compliance DLC compliance
Energy Certifications	DLC Standard
DesignLights Consortium Qualified Product List	-

Product Data

Order product name	15T8 LED/24-5000 IF 6U EasySmart 1PK
EAN/UPC - Product	046677474041
Order code	474049
Numerator - Quantity Per Pack	1
Numerator - Packs per outer box	10
Material Nr. (12NC)	929001398304
Net Weight (Piece)	0.270 kg
Model Number	9290013983

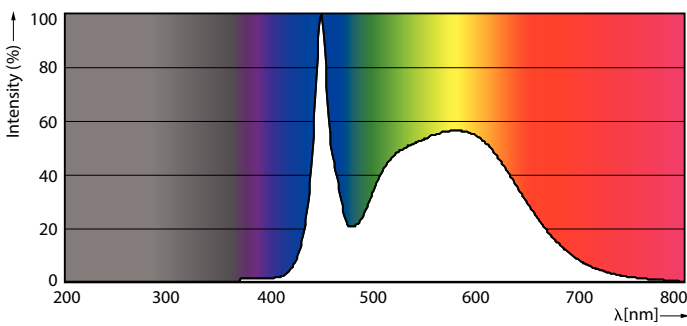
Dimensional drawing



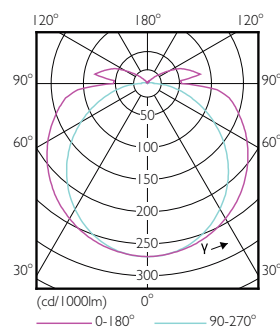
TLED SMART 4ft HF 14-32W 2100lm 5000K

Product	D1	D2	B	A1	D
15T8 LED/24-5000 IF 6U EasySmart 1PK	25.4 mm	27.8 mm	152 mm	570 mm	27.8 mm

Photometric data



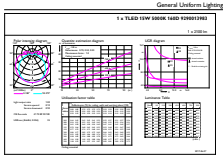
LEDtube 15W G13 850 160D IF 6U EasySmart



LEDtube 15W G13 830 160D IF 6U EasySmart

MasterConnect LEDtube InstantFit T8

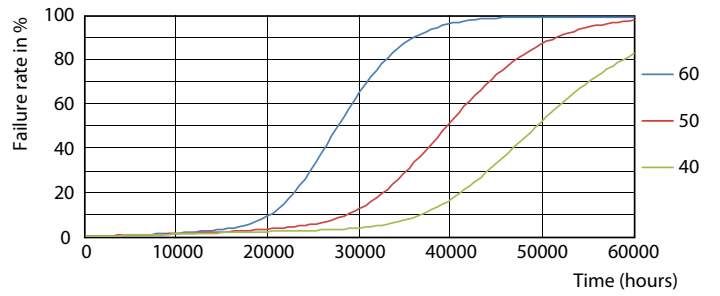
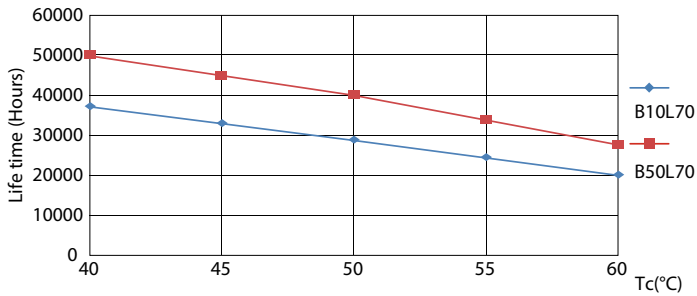
Photometric data



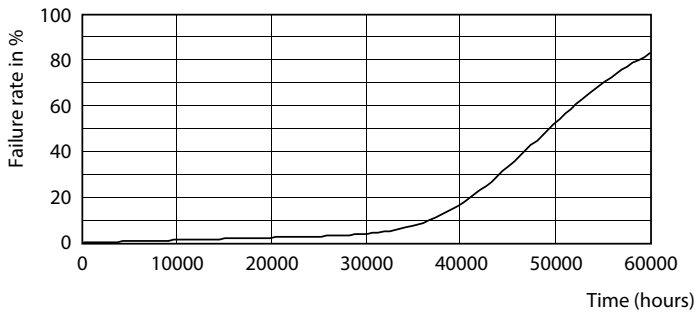
General Information 11 Page Lighting 11 Page 11

LEDtube 15W G13 850 160D IF 6U EasySmart

Lifetime

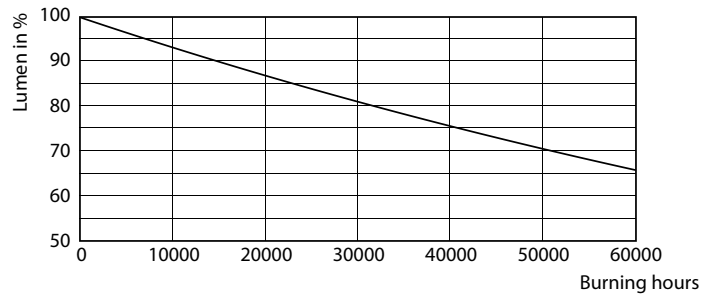


LEDtube 15W G13 830-850 160D IF 6U EasySmart



LEDtube 15W G13 830-850 160D IF 6U EasySmart

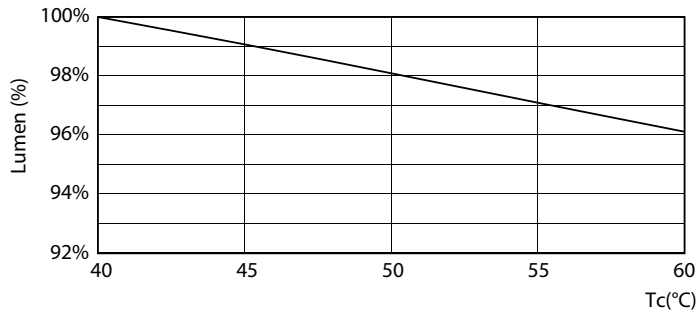
LEDtube 15W G13 830-850 160D IF 6U EasySmart



LEDtube 15W G13 830-850 160D IF 6U EasySmart

MasterConnect LEDtube InstantFit T8

Lifetime



LEDtube 15W G13 830-850 160D IF 6U EasySmart

