



# MasterConnect LEDtube EM/Mains T8

## MASTERConnect LEDtube IA 1200mm UO 16.5W830 T8

Philips MasterConnect LEDtube EM/Mains T8 makes it easy to upgrade to a connected lighting system. Its 2.4 GHz mesh networking technology enables wireless integration with a variety of control devices, such as sensors and switches. The result? Even more energy saving and enhanced flexibility in your space. Through dimming, occupancy sensing and/or daylight harvesting, lamps deliver 50% or more energy saving thanks to MasterConnect technology.

### Product data

General Information		Lamp current (max.)		76 mA	
Cap base	G13 [ Medium Bi-Pin Fluorescent]	Lamp current (min.)	69 mA		
Nominal lifetime (nom.)	50000 h	Starting time (nom.)	0.5 s		
Switching cycle	200000X	Warm-up time to 60% light (nom.)	0.5 s		
Light Technical		Power factor (nom.)	0.9		
Colour code	830 [ CCT of 3,000 K]	Voltage (Nom)	220-240 V		
Beam Angle (Nom)	160 °	Temperature			
Luminous flux (nom.)	2300 lm	T ambient (max.)	45 °C		
Correlated colour temperature (nom.)	3000 K	T ambient (min.)	-20 °C		
Colour consistency	<6	T storage (max.)	65 °C		
Color rendering index (nom.)	83	T storage (min.)	-40 °C		
LLMF at end of nominal lifetime (nom.)	70 %	T-Case maximum (nom.)	45 °C		
Operating and Electrical		Mechanical and Housing			
Input frequency	50 to 60 Hz	Product length	1200 mm		
Power (Rated) (Nom)	16.5 W				

# MasterConnect LEDtube EM/Mains T8

## Approval and Application

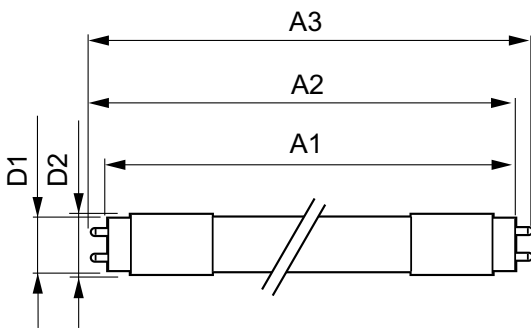
Energy efficiency label (EEL)	A++
Energy-saving product	Yes
Approval marks	CE marking RoHS compliance KEMA Keur certificate
Energy Consumption kWh/1000 h	17 kWh

## Product Data

Full product code	871869677342000
Order product name	MASTERConnect LEDtube IA 1200mm UO 16.5W830 T8

EAN/UPC – product	8718696773420
Order code	77342000
Numerator – quantity per pack	1
Numerator – packs per outer box	10
Material no. (12NC)	929001813702
Net weight (piece)	0.251 kg

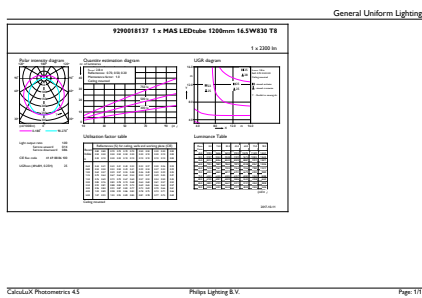
## Dimensional drawing



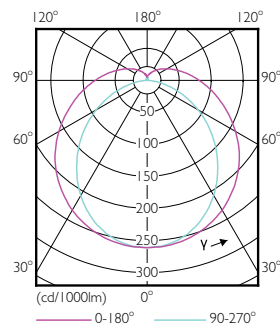
TLED 1200mm 16.5W 2300lm 3000K G13 D

Product	D1	D2	A1	A2	A3
MASTERConnect LEDtube	25.7	28 mm	1199.4	1205.3	1212.4
IA 1200mm UO 16.5W830 T8	mm		mm	mm	mm

## Photometric data



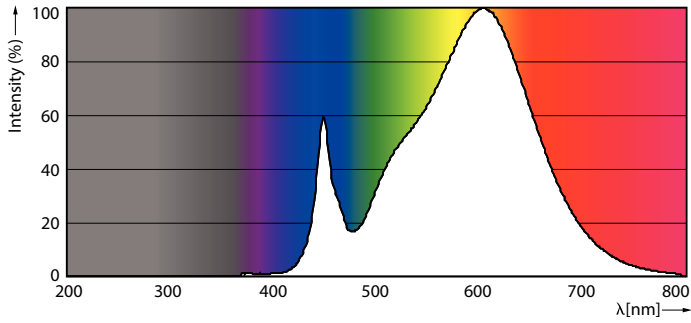
16-5W G13 830 3000K



16-5W G13 830 3000K

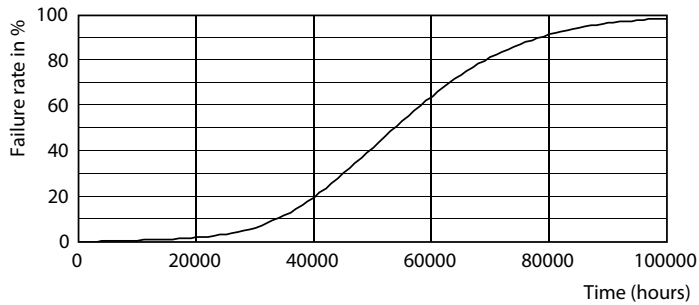
# MasterConnect LEDtube EM/Mains T8

## Photometric data

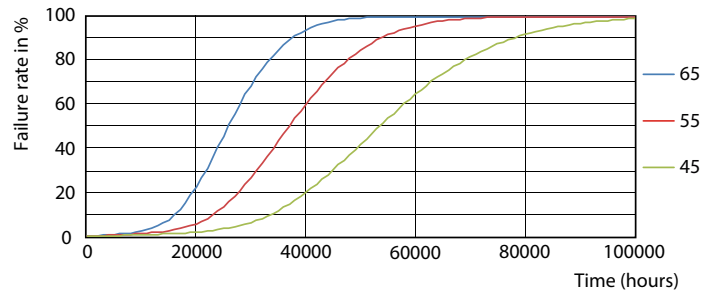


16-5W G13

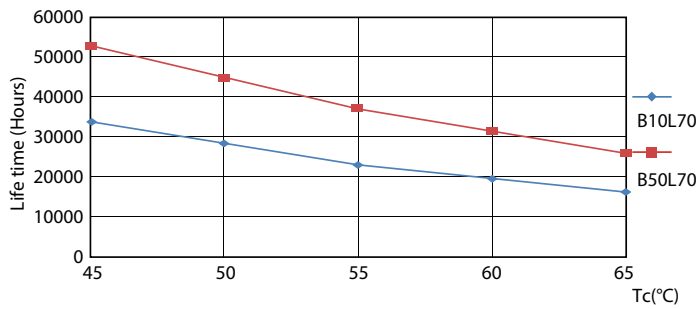
## Lifetime



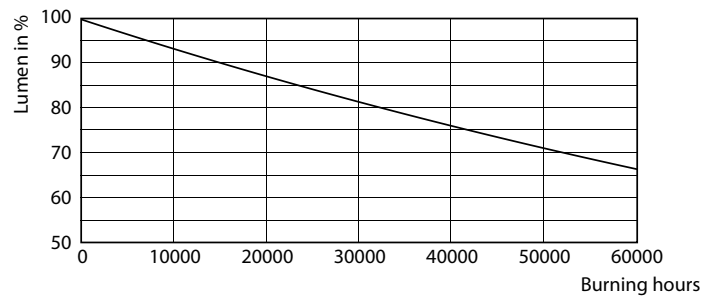
16-5W G13



16-5W G13



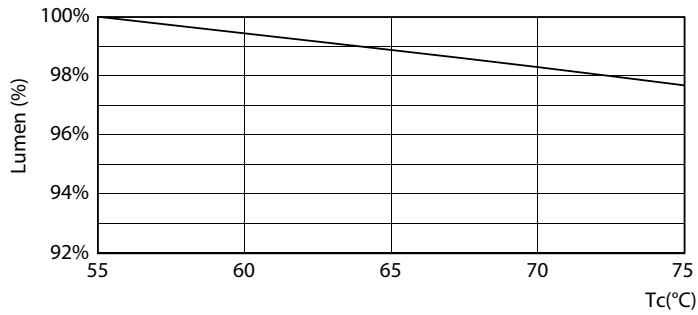
16-5W G13



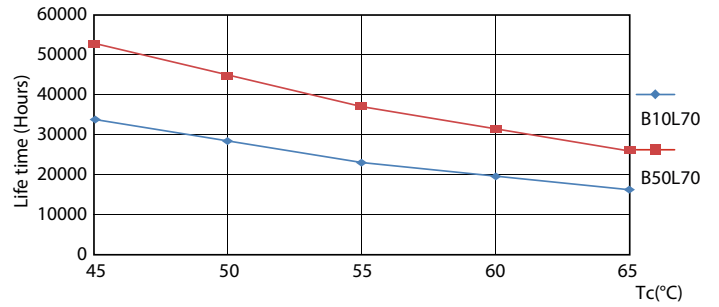
16-5W G13

# MasterConnect LEDtube EM/Mains T8

## Lifetime



16-5W G13



16-5W G13

