

MasterConnect LEDtube EM/Mains T8

MASTERConnect LEDtube IA 1200mm UO 16.5W865 T8

Philips MasterConnect LEDtube EM/Mains T8 makes it easy to upgrade to a connected lighting system. Its 2.4 GHz mesh networking technology enables wireless integration with a variety of control devices, such as sensors and switches. The result? Even more energy saving and enhanced flexibility in your space. Through dimming, occupancy sensing and/or daylight harvesting, lamps deliver 50% or more energy saving thanks to MasterConnect technology.

Product data

General Information	
Cap base	G13 [Medium Bi-Pin Fluorescent]
Nominal lifetime (nom.)	50000 h
Switching cycle	200000X
Light Technical	
Colour Code	865 [CCT of 6,500 K]
Technical Beam Angle (Nom)	160 °
Lamp Luminous Flux 25°C EL (Nom)	2500 lm
Colour Temperature, horizontal (Nom)	6500 K
Colour consistency	<6
Colour Rendering Index,horiz (Nom)	83
LLMF at end of nominal lifetime (nom.)	70 %
Operating and Electrical	
Input frequency	50 to 60 Hz
Power (Rated) (Nom)	16.5 W

Lamp current (max.)	76 mA
Lamp current (min.)	69 mA
Starting time (nom.)	0.5 s
Warm-up time to 60% light (nom.)	0.5 s
Power factor (nom.)	0.9
Voltage (Nom)	220-240 V
Temperature	
T ambient (max.)	45 °C
T ambient (min.)	-20 °C
T storage (max.)	65 °C
T storage (min.)	-40 °C
T-Case maximum (nom.)	45 °C
Mechanical and Housing	
Product length	1200 mm

MasterConnect LEDtube EM/Mains T8

Approval and Application

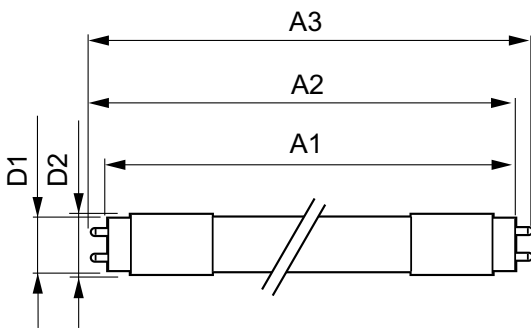
Energy efficiency label (EEL)	A++
Energy-saving product	Yes
Approval marks	CE marking RoHS compliance KEMA Keur certificate
Energy Consumption kWh/1000 h	17 kWh

Product Data

Full product code	694793914364100
Order product name	MASTERConnect LEDtube IA 1200mm UO 16.5W865 T8

EAN/UPC – product	6947939143641
Order code	929001813910
Numerator – quantity per pack	1
Numerator – packs per outer box	10
Material no. (12NC)	929001813910
Net weight (piece)	0.251 kg

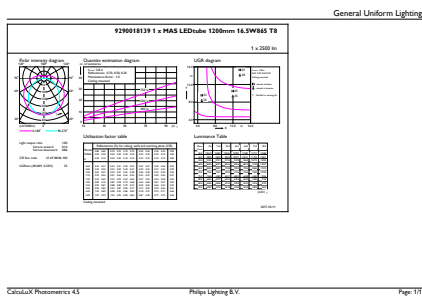
Dimensional drawing



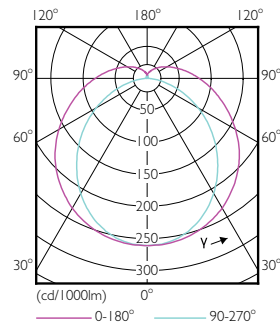
TLED 1200mm 16.5W 2500lm 6500K G13 D

Product	D1	D2	A1	A2	A3
MASTERConnect LEDtube	25.7	28 mm	1199.4	1205.3	1212.4
IA 1200mm UO 16.5W865 T8	mm		mm	mm	mm

Photometric data



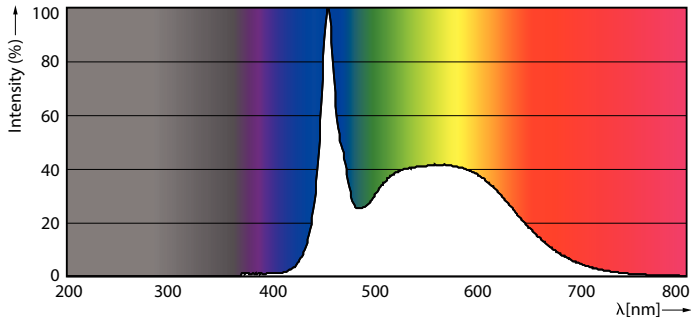
16-5W G13 865 6500K



16-5W G13 830 3000K

MasterConnect LEDtube EM/Mains T8

Photometric data

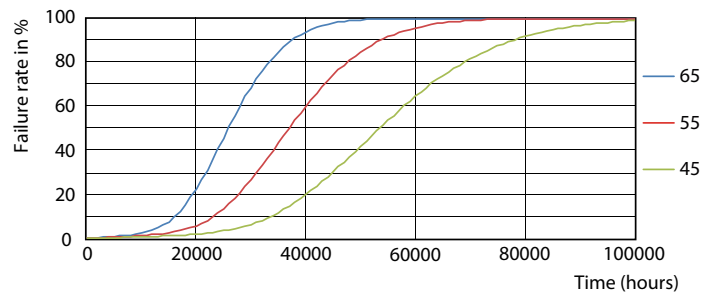


16-5W G13

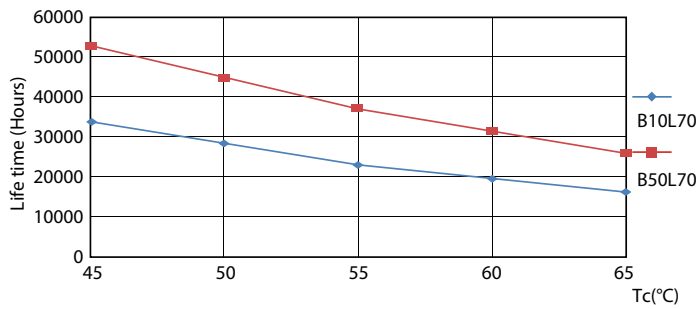
Lifetime



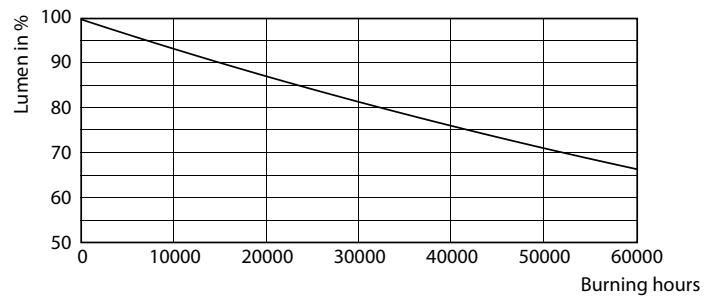
16-5W G13



16-5W G13



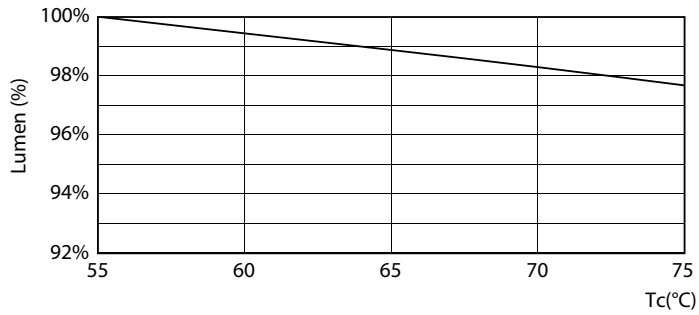
16-5W G13



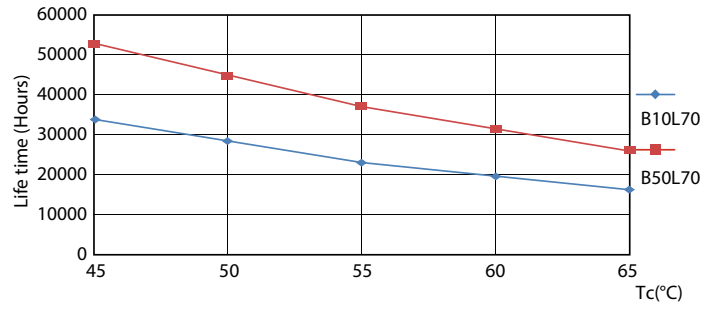
16-5W G13

MasterConnect LEDtube EM/Mains T8

Lifetime



16-5W G13



16-5W G13

