



# PL-C/T

## 12PLC/T LED/32H/830/IF/4P/DIM 1PK 10/1

Philips PLED 4-pin & 2-pin lamps are an affordable LED solution to replace compact fluorescent lamps. The product provides a natural lighting effect for use in many lighting applications, and provides instant energy savings, making them an environmentally-friendly solution. Available as replacements for 13W, 26W and 32W compact fluorescent lamps.

### Product data

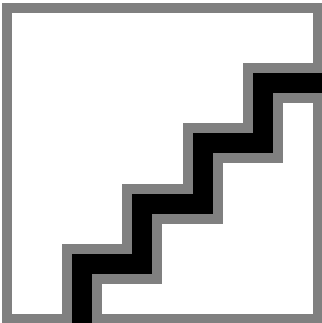
| General Information                   |                          | Warm Up Time to 60% Light (Nom) |  |
|---------------------------------------|--------------------------|---------------------------------|--|
| Base                                  | G24Q/GX24Q [ G24q/GX24q] |                                 | 0.5 s  |
| Main Application                      | Industrial               | Power Factor (Nom)              | 0.9  |
| Nominal Lifetime (Nom)                | 50000 h                  | Voltage (Nom)                   | 25-55 V  |
| Switching Cycle                       | 50000X                   | <b>Temperature</b>              |  |
| B50L70                                | 50000 h                  | T-Ambient (Max)                 | 45 °C  |
| <b>Light Technical</b>                |                          | T-Ambient (Min)                 | -20 °C   |
| Color Code                            | 830 [ CCT of 3000K]      | T-Storage (Max)                 | 65 °C  |
| Initial lumen (Nom)                   | 1350 lm                  | T-Storage (Min)                 | -40 °C   |
| Luminous Flux (Rated) (Nom)           | 1350 lm                  | <b>Controls and Dimming</b>     |  |
| Correlated Color Temperature (Nom)    | 3000 K                   | Dimmable                        | Yes  |
| Color Consistency                     | <6                       | <b>Mechanical and Housing</b>   |  |
| Color Rendering Index (Nom)           | 82                       | Product Length                  | 200 mm   |
| LLMF At End Of Nominal Lifetime (Nom) | 70 %                     | <b>Approval and Application</b> |  |
| <b>Operating and Electrical</b>       |                          | Energy Saving Product           | Yes  |
| Input Frequency                       | 20000-100000 Hz          | Approbation Marks               | UL certificate RoHS compliance KEMA<br>Keur certificate DLC compliance |
| Power (Rated) (Nom)                   | 12 W                     | Energy Certifications           | DLC Standard   |
| Lamp Current (Max)                    | 500 mA                   |                                 |  |
| Lamp Current (Min)                    | 150 mA                   |                                 |  |
| Starting Time (Nom)                   | 0.5 s                    |                                 |  |

# PL-C/T

|  |  |
|--|--|
| DesignLights Consortium Qualified Product List |  |
| <b>Product Data</b>                            |  |
| Order product name                             | 12PLC/T LED/32H/830/IF/4P/DIM 1PK 10/1 |
| EAN/UPC - Product                              | 046677476076                           |
| Order code                                     | 476077                                 |

|                                 |              |
|---------------------------------|--------------|
| Numerator - Quantity Per Pack   | 1            |
| Numerator - Packs per outer box | 10           |
| Material Nr. (12NC)             | 929001819804 |
| Net Weight (Piece)              | 0.082 kg     |
| Model Number                    | 9290018198   |

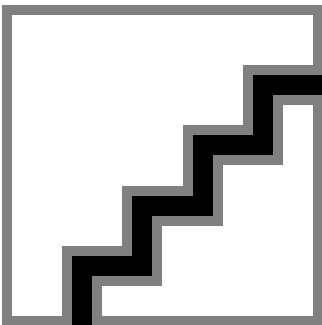
## Dimensional drawing



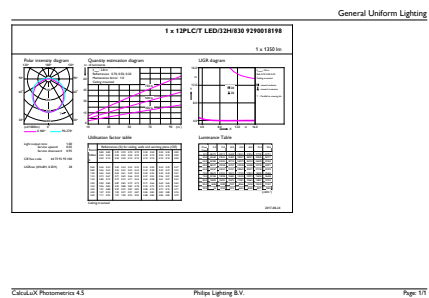
PLED 120V 12-32W 1350lm 3000K G24/Gx24

| Product                                      | D1      | D2      | A1       | A2     | A3       |
|--|---------|---------|----------|--------|----------|
| 12PLC/T<br>LED/32H/830/IF/4P/DIM 1PK<br>10/1 | 24.3 mm | 28.4 mm | 128.8 mm | 148 mm | 163.6 mm |

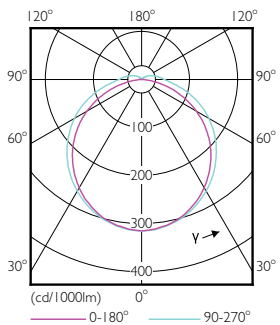
## Photometric data



LEDtube PLC 400mm 16-5W 2G11 830 2000lm

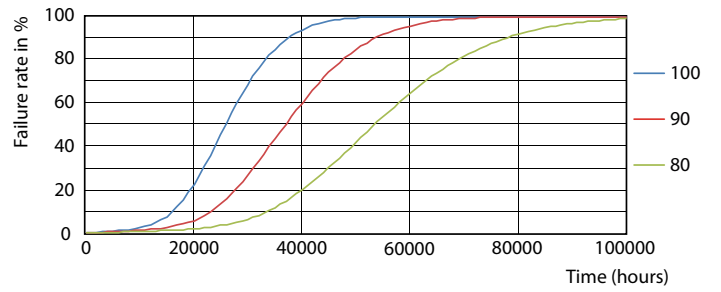
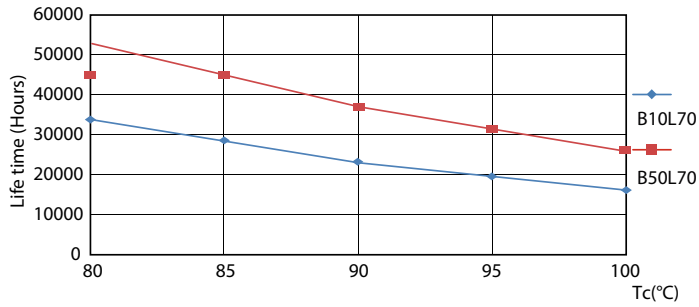


LEDtube PLC/T 12W G24Q 830 32H DIM



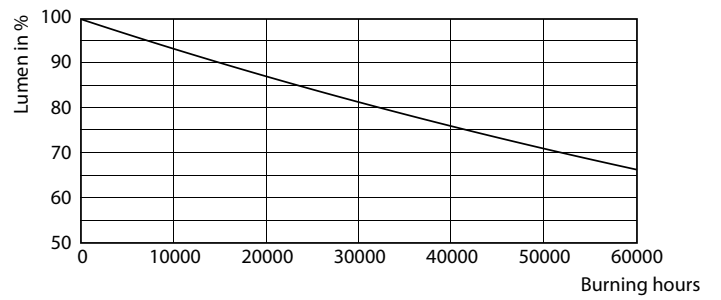
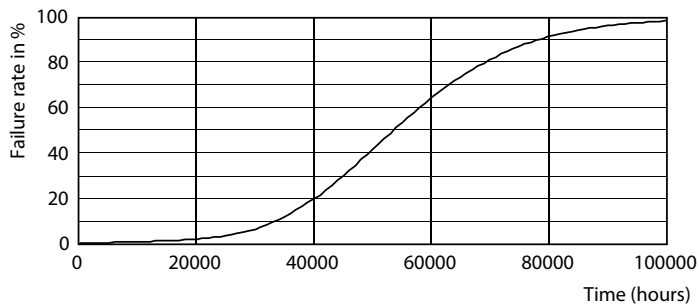
LEDtube PLC/T 12W G24Q 827 32H DIM

Lifetime



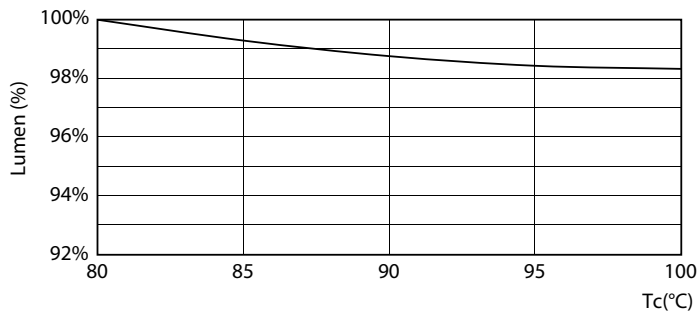
LEDtube PLC/T 12W G24Q 827-840 32H-32V DIM

LEDtube PLC/T 12W G24Q 827-840 32H-32V DIM



LEDtube PLC/T 12W G24Q 827-840 32H-32V DIM

LEDtube PLC/T 12W G24Q 827-840 32H-32V DIM



LEDtube PLC/T 12W G24Q 827-840 32H DIM

