



# PL-C/T

## 12PLC/T LED/32V/827/IF/4P/DIM 1PK 10/1

Philips PLED 4-pin & 2-pin lamps are an affordable LED solution to replace compact fluorescent lamps. The product provides a natural lighting effect for use in many lighting applications, and provides instant energy savings, making them an environmentally-friendly solution. Available as replacements for 13W, 26W and 32W compact fluorescent lamps.

### Product data

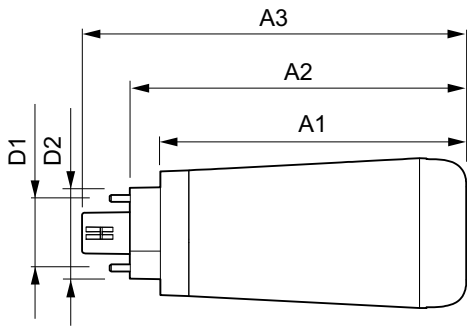
General Information		Lamp Current (Min)	
Cap-Base	GX24q		150 mA
EU RoHS compliant	Yes	Starting Time (Nom)	0.5 s
Main Application	Industrial	Warm Up Time to 60% Light (Nom)	0.5 s
Nominal Lifetime (Nom)	50000 h	Power Factor (Nom)	0.9
Switching Cycle	50000X	Voltage (Nom)	25-55 V
Technical Type	12-32W		
Light Technical		Temperature	
Color Code	827 [ CCT of 2700K]	T-Ambient (Max)	45 °C
Luminous Flux (Nom)	1350 lm	T-Ambient (Min)	-20 °C
Luminous Flux (Rated) (Nom)	1350 lm	T-Storage (Max)	65 °C
Correlated Color Temperature (Nom)	2700 K	T-Storage (Min)	-40 °C
Luminous Efficacy (rated) (Nom)	112.00 lm/W	Controls and Dimming	
Color Consistency	<6	Dimmable	Yes
Color Rendering Index (Nom)	82	Mechanical and Housing	
LLMF At End Of Nominal Lifetime (Nom)	70 %	Bulb Finish	Frosted
		Bulb Material	Plastic
		Product Length	100 mm
Operating and Electrical		Approval and Application	
Input Frequency	20000-100000 Hz	Energy Saving Product	Yes
Power (Rated) (Nom)	12 W		
Lamp Current (Max)	500 mA		

# PL-C/T

<b>Approval Marks</b>	RoHS compliance UL certificate KEMA Keur certificate DLC compliance
<b>Energy Certifications</b>	DLC Standard
<b>Product Data</b>	
<b>Order product name</b>	12PLC/T LED/32V/827/IF/4P/DIM 1PK 10/1
<b>EAN/UPC - Product</b>	046677476106

<b>Order code</b>	476101
<b>Numerator - Quantity Per Pack</b>	1
<b>Numerator - Packs per outer box</b>	10
<b>Material Nr. (12NC)</b>	929001820104
<b>Net Weight (Piece)</b>	0.082 kg

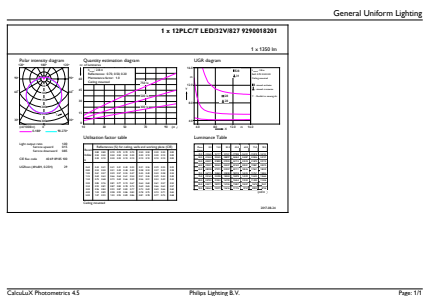
## Dimensional drawing



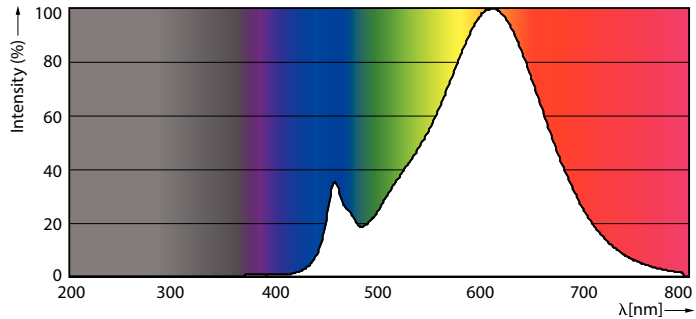
PLED 120V 12-32W 1350lm 2700K G24/Gx24

Product	D1	D2	A1	A2	A3
12PLC/T	24.3 mm	29 mm	99.9 mm	109.9 mm	125.5 mm
LED/32V/827/IF/4P/DIM 1PK 10/1					

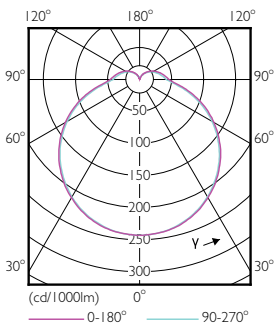
## Photometric data



LEDtube PLC/T 12W G24Q 827 32V DIM

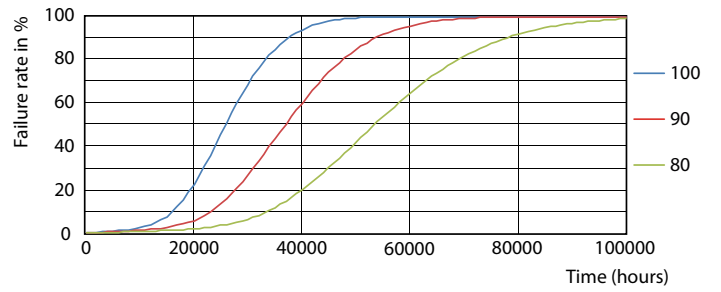
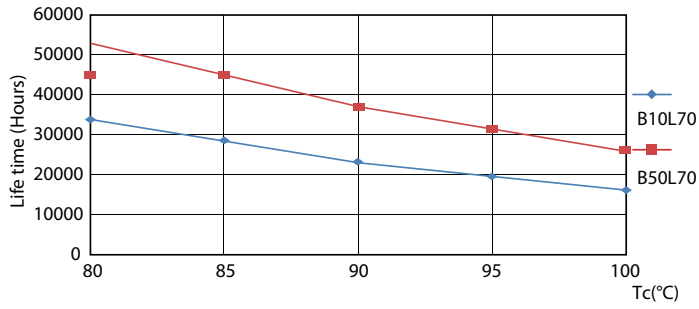


LEDtube PLC/T 12W G24Q 827 32H-32V DIM



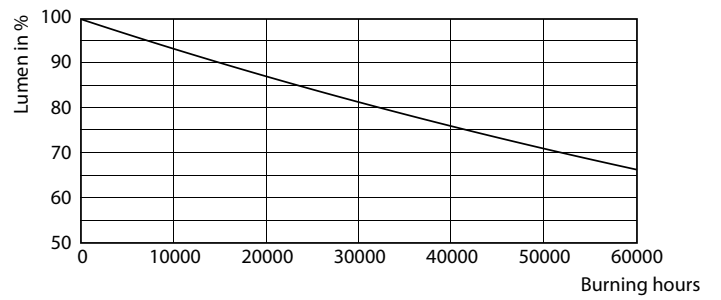
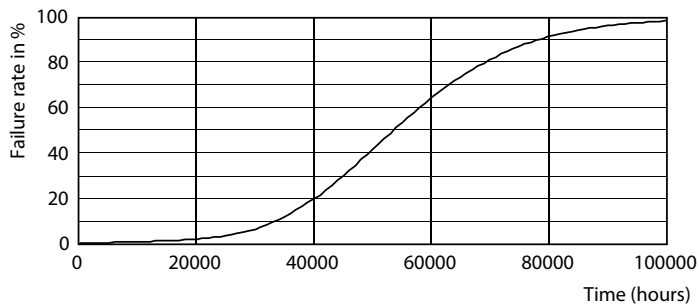
LEDtube PLC/T 12W G24Q 827 32V DIM

Lifetime



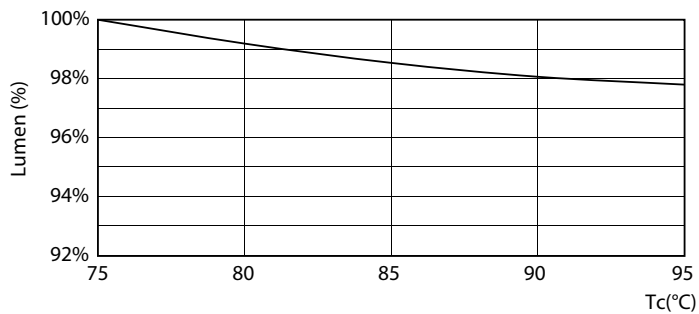
LEDtube PLC/T 12W G24Q 827-840 32H-32V DIM

LEDtube PLC/T 12W G24Q 827-840 32H-32V DIM



LEDtube PLC/T 12W G24Q 827-840 32H-32V DIM

LEDtube PLC/T 12W G24Q 827-840 32H-32V DIM



LEDtube PLC/T 12W G24Q 827-840 32V DIM

