



PL-C/T

12PLC/T LED/32V/830/IF/4P/DIM 1PK 10/1

Philips PLED 4-pin & 2-pin lamps are an affordable LED solution to replace compact fluorescent lamps. The product provides a natural lighting effect for use in many lighting applications, and provides instant energy savings, making them an environmentally-friendly solution. Available as replacements for 13W, 26W and 32W compact fluorescent lamps.

Product data

| General Information | |
|---------------------------------------|---------------------|
| Base | GX24q |
| EU RoHS compliant | Yes |
| Main Application | Industrial |
| Nominal Lifetime (Nom) | 50000 h |
| Switching Cycle | 50000X |
| Technical Type | 12-32W |
| Light Technical | |
| Color Code | 830 [CCT of 3000K] |
| Initial lumen (Nom) | 1400 lm |
| Luminous Flux (Rated) (Nom) | 1400 lm |
| Correlated Color Temperature (Nom) | 3000 K |
| Luminous Efficacy (rated) (Nom) | 116.00 lm/W |
| Color Consistency | <6 |
| Color Rendering Index (Nom) | 82 |
| LLMF At End Of Nominal Lifetime (Nom) | 70 % |
| Operating and Electrical | |
| Input Frequency | 20000-100000 Hz |
| Power (Rated) (Nom) | 12 W |
| Lamp Current (Max) | 500 mA |

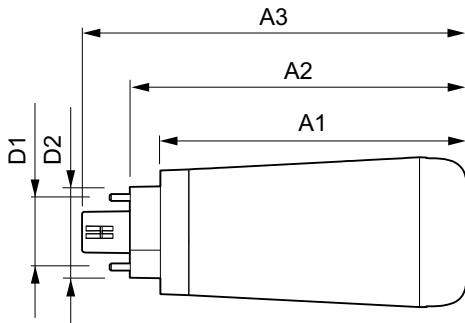
| Lamp Current (Min) | 150 mA |
|---------------------------------|---------|
| Starting Time (Nom) | 0.5 s |
| Warm Up Time to 60% Light (Nom) | 0.5 s |
| Power Factor (Nom) | 0.9 |
| Voltage (Nom) | 25-55 V |
| Temperature | |
| T-Ambient (Max) | 45 °C |
| T-Ambient (Min) | -20 °C |
| T-Storage (Max) | 65 °C |
| T-Storage (Min) | -40 °C |
| Controls and Dimming | |
| Dimmable | Yes |
| Mechanical and Housing | |
| Bulb Finish | Frosted |
| Bulb Material | Plastic |
| Product Length | 100 mm |
| Approval and Application | |
| Energy Saving Product | Yes |

PL-C/T

| | |
|------------------------------|---|
| Approbation Marks | RoHS compliance UL certificate KEMA Keur certificate DLC compliance |
| Energy Certifications | DLC Standard |
| Product Data | |
| Order product name | 12PLC/T LED/32V/830/IF/4P/DIM 1PK 10/1 |
| EAN/UPC - Product | 046677476113 |
| Order code | 476119 |

| | |
|--|--------------|
| Numerator - Quantity Per Pack | 1 |
| Numerator - Packs per outer box | 10 |
| Material Nr. (12NC) | 929001820204 |
| Net Weight (Piece) | 0.082 kg |
| Model Number | 9290018202 |

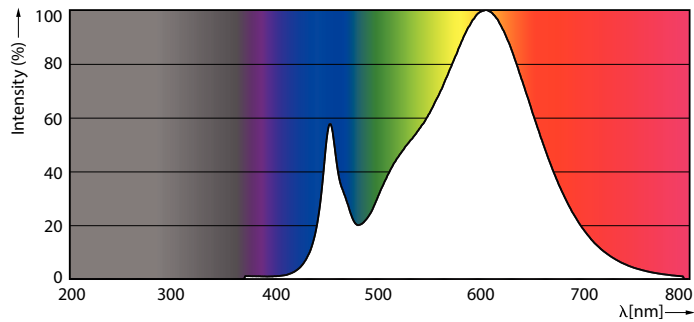
Dimensional drawing



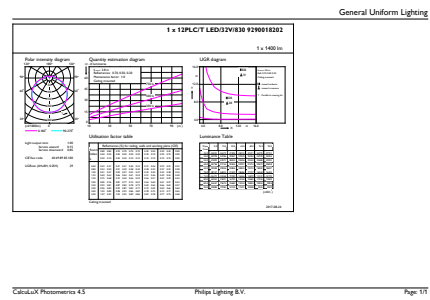
PLED 120V 12-32W 1400lm 3000K G24/Gx24

| Product | D1 | D2 | A1 | A2 | A3 |
|---------------------------|---------|-------|---------|----------|----------|
| 12PLC/T | 24.3 mm | 29 mm | 99.9 mm | 109.9 mm | 125.5 mm |
| LED/32V/830/IF/4P/DIM 1PK | | | | | |
| 10/1 | | | | | |

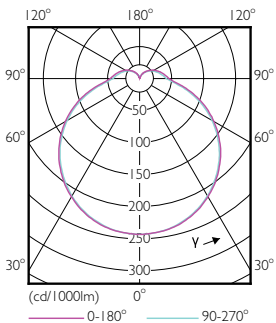
Photometric data



LEDtube PLC 400mm 16-5W 2G11 830 2000lm

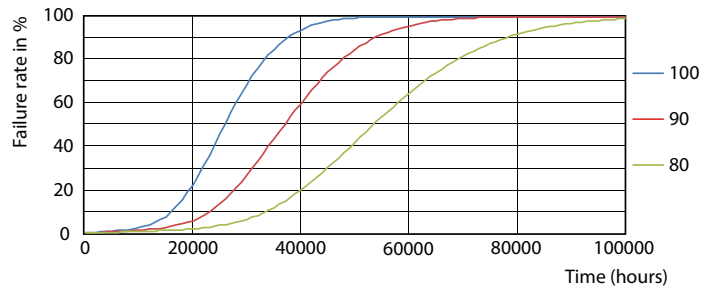
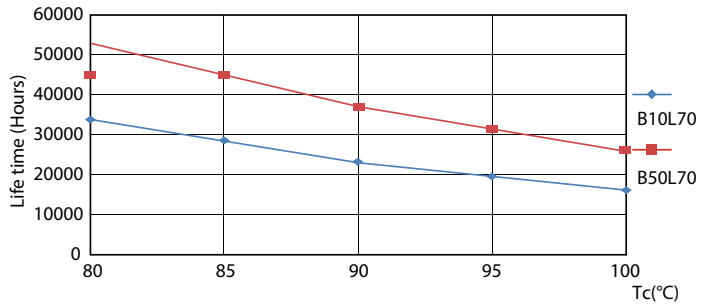


LEDtube PLC/T 12W G24Q 830 32V DIM



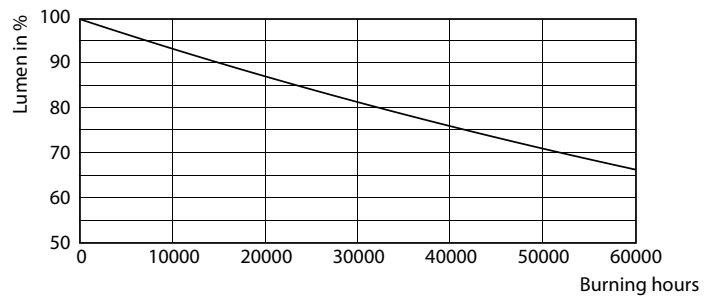
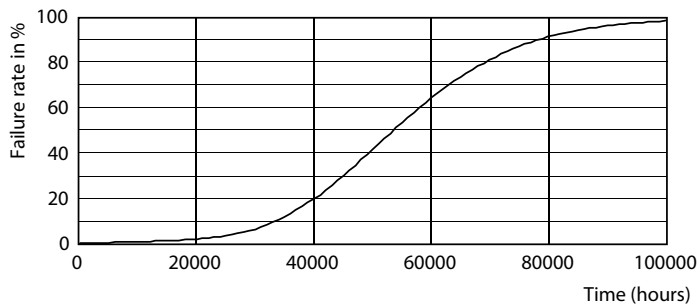
LEDtube PLC/T 12W G24Q 827 32V DIM

Lifetime



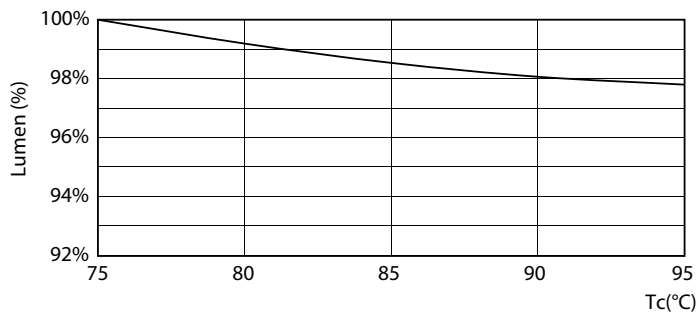
LEDtube PLC/T 12W G24Q 827-840 32H-32V DIM

LEDtube PLC/T 12W G24Q 827-840 32H-32V DIM



LEDtube PLC/T 12W G24Q 827-840 32H-32V DIM

LEDtube PLC/T 12W G24Q 827-840 32H-32V DIM



LEDtube PLC/T 12W G24Q 827-840 32V DIM

