



PL-C/T

12PLC/T LED/32V/840/IF/4P/DIM 1PK 10/1

Philips PLED 4-pin & 2-pin lamps are an affordable LED solution to replace compact fluorescent lamps. The product provides a natural lighting effect for use in many lighting applications, and provides instant energy savings, making them an environmentally-friendly solution. Available as replacements for 13W, 26W and 32W compact fluorescent lamps.

Product data

General Information	
Base	GX24q
EU RoHS compliant	Yes
Main Application	Industrial
Nominal Lifetime (Nom)	50000 h
Switching Cycle	50000X
Technical Type	12-32W
Light Technical	
Color Code	841 [CCT of 4100K (841)]
Initial lumen (Nom)	1500 lm
Luminous Flux (Rated) (Nom)	1500 lm
Correlated Color Temperature (Nom)	4000 K
Luminous Efficacy (rated) (Nom)	125.00 lm/W
Color Consistency	<6
Color Rendering Index (Nom)	82
LLMF At End Of Nominal Lifetime (Nom)	70 %
Operating and Electrical	
Input Frequency	20000-100000 Hz
Power (Rated) (Nom)	12 W
Lamp Current (Max)	500 mA

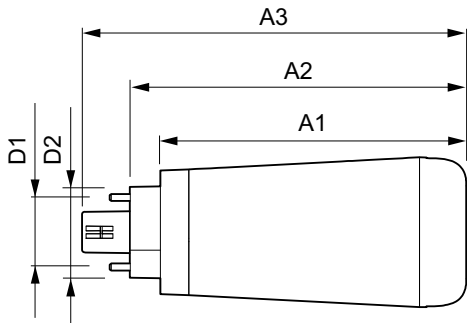
Lamp Current (Min)	150 mA
Starting Time (Nom)	0.5 s
Warm Up Time to 60% Light (Nom)	0.5 s
Power Factor (Nom)	0.9
Voltage (Nom)	25-55 V
Temperature	
T-Ambient (Max)	45 °C
T-Ambient (Min)	-20 °C
T-Storage (Max)	65 °C
T-Storage (Min)	-40 °C
Controls and Dimming	
Dimmable	Yes
Mechanical and Housing	
Bulb Finish	Frosted
Bulb Material	Plastic
Product Length	100 mm
Approval and Application	
Energy Saving Product	Yes

PL-C/T

Approbation Marks	RoHS compliance UL certificate KEMA Keur certificate DLC compliance
Energy Certifications	DLC Standard
Product Data	
Order product name	12PLC/T LED/32V/840/IF/4P/DIM 1PK 10/1
EAN/UPC - Product	046677476137
Order code	476135

Numerator - Quantity Per Pack	1
Numerator - Packs per outer box	10
Material Nr. (12NC)	929001820404
Net Weight (Piece)	0.082 kg
Model Number	9290018204

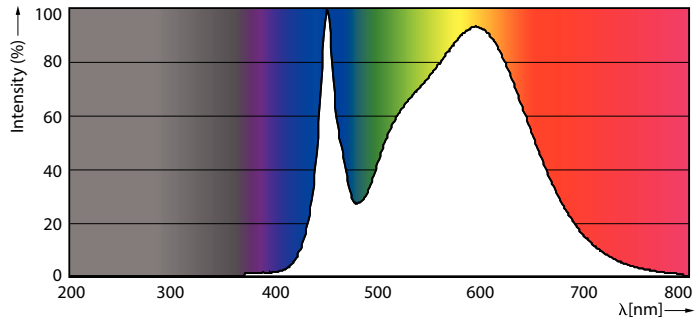
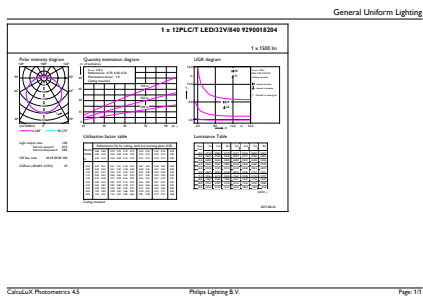
Dimensional drawing



PLED 120V 12-32W 1500lm 4000K G24/Gx24

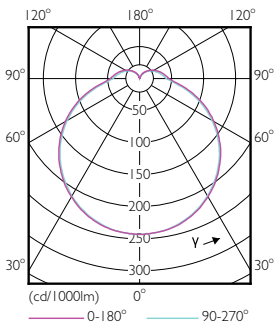
Product	D1	D2	A1	A2	A3
12PLC/T	24.3 mm	29 mm	99.9 mm	109.9 mm	125.5 mm
LED/32V/840/IF/4P/DIM 1PK					
10/1					

Photometric data



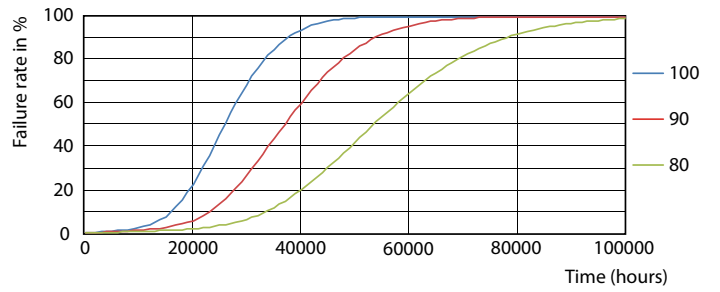
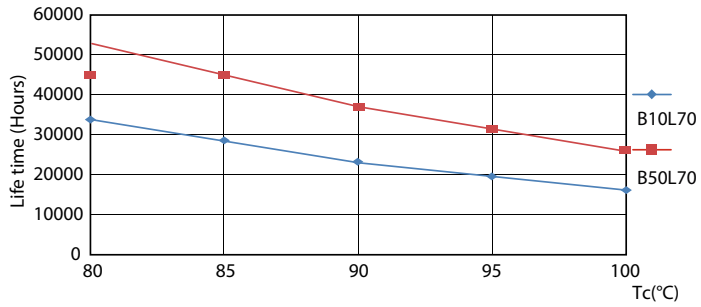
LEDtube PLC/T 12W G24Q 840 32V DIM

LEDtube PLC/T 12W G24Q 840 32V DIM



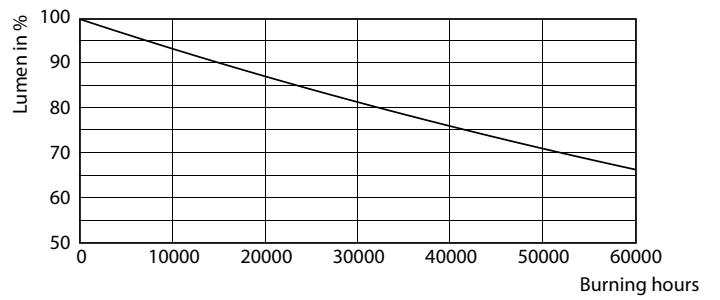
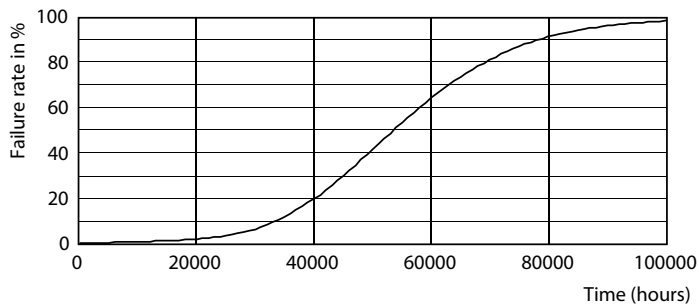
LEDtube PLC/T 12W G24Q 827 32V DIM

Lifetime



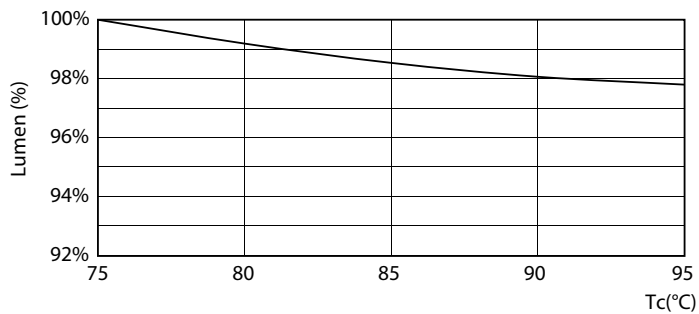
LEDtube PLC/T 12W G24Q 827-840 32H-32V DIM

LEDtube PLC/T 12W G24Q 827-840 32H-32V DIM



LEDtube PLC/T 12W G24Q 827-840 32H-32V DIM

LEDtube PLC/T 12W G24Q 827-840 32H-32V DIM



LEDtube PLC/T 12W G24Q 827-840 32V DIM

