



T5

14T5HE/46-830/IF20/G/DIM 10/1

Philips LED T5 InstantFit Lamps are an ideal energy saving choice for existing linear fluorescent fixtures.

Product data

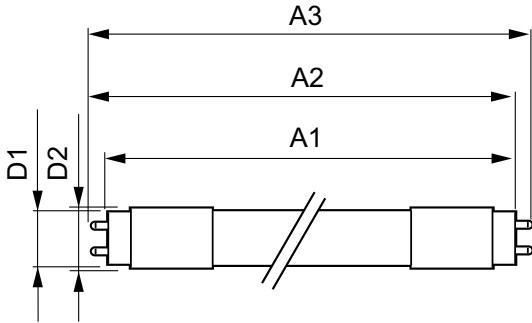
| General Information | | Voltage (Nom) | |
|---------------------------------------|---------------------|--|--------------------------------|
| Base | G5 [G5] | 70-105 V | |
| EU RoHS compliant | Yes | Temperature | |
| Nominal Lifetime (Nom) | 50000 h | T-Ambient (Max) | 45 °C |
| Switching Cycle | 50000X | T-Ambient (Min) | -20 °C |
| Light Technical | | T-Storage (Max) | 65 °C |
| Color Code | 830 [CCT of 3000K] | T-Storage (Min) | -40 °C |
| Beam Angle (Nom) | 200 ° | T-Case Maximum (Nom) | 70 °C |
| Initial lumen (Nom) | 2000 lm | Controls and Dimming | |
| Luminous Flux (Rated) (Nom) | 2000 lm | Dimmable | Yes |
| Correlated Color Temperature (Nom) | 3000 K | Mechanical and Housing | |
| Color Consistency | <6 | Product Length | 1200 mm |
| Color Rendering Index (Nom) | 82 | Approval and Application | |
| LLMF At End Of Nominal Lifetime (Nom) | 70 % | Energy Saving Product | Yes |
| Operating and Electrical | | Approbation Marks | UL certificate RoHS compliance |
| Input Frequency | 40000-110000 Hz | Energy Certifications | DLC Standard |
| Power (Rated) (Nom) | 14 W | DesignLights Consortium Qualified Product List | - |
| Lamp Current (Max) | 350 mA | Product Data | |
| Lamp Current (Min) | 150 mA | XUCDM.COPY.Product.Title | 14T5HE/46-830/IF20/G/DIM 10/1 |
| Starting Time (Nom) | 0.5 s | EAN/UPC - Product | 046677476496 |
| Warm Up Time to 60% Light (Nom) | 0.5 s | Order code | 476499 |
| Power Factor (Nom) | 0.9 | | |

T5

| | |
|---------------------------------|--------------|
| Numerator - Quantity Per Pack | 1 |
| Numerator - Packs per outer box | 10 |
| Material Nr. (12NC) | 929001823904 |
| Net Weight (Piece) | 0.146 kg |

| | |
|--------------|------------|
| Model Number | 9290018239 |
|--------------|------------|

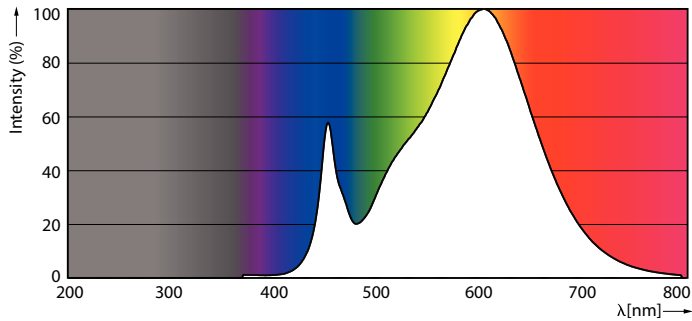
Dimensional drawing



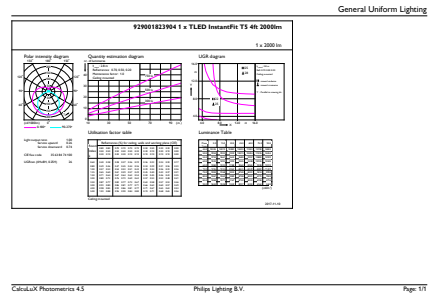
TLED 1200mm HFV16-28W 2100lm 3000K ND

| Product | D1 | D2 | A1 | A2 | A3 |
|-----------------|---------|---------|-----------|-----------|---------|
| 14T5HE/46-830/ | 15.3 mm | 18.4 mm | 1147.8 mm | 1154.9 mm | 1162 mm |
| IF20/G/DIM 10/1 | | | | | |

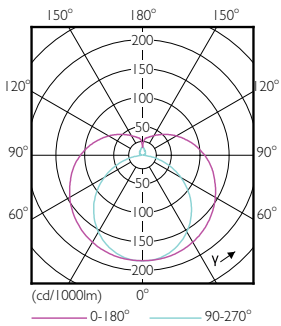
Photometric data



LEDtube PLC 400mm 16-5W 2G11 830 2000lm

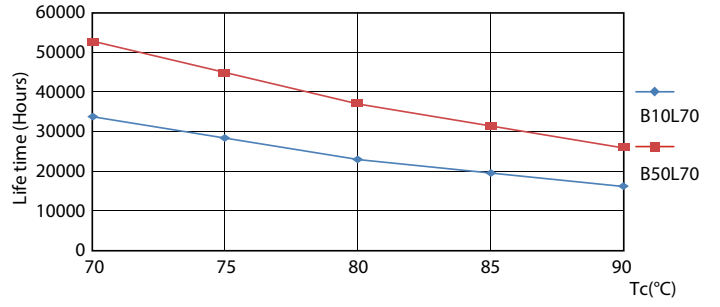
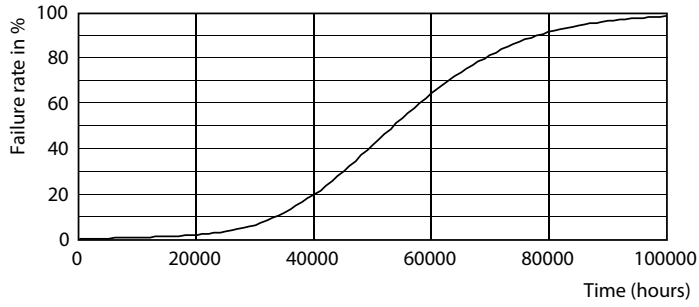


LEDtube 14W G5 830 200D DIM IF20



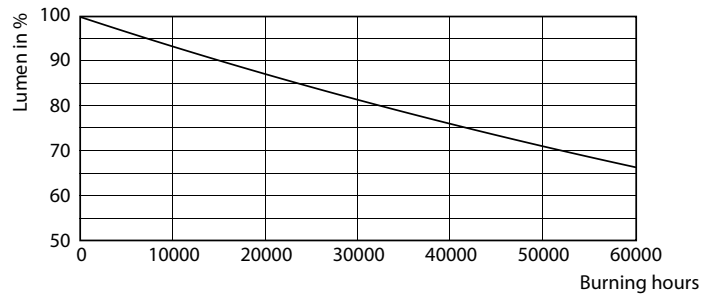
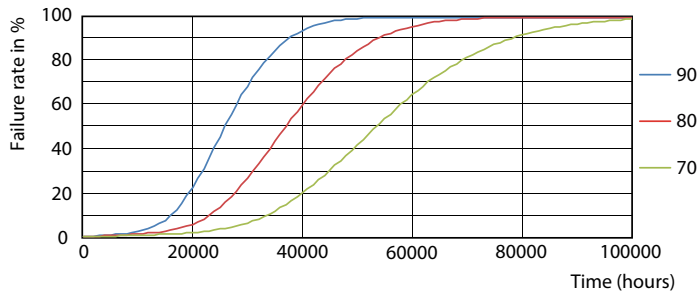
LEDtube 8W G5 830 200D DIM IF10

Lifetime



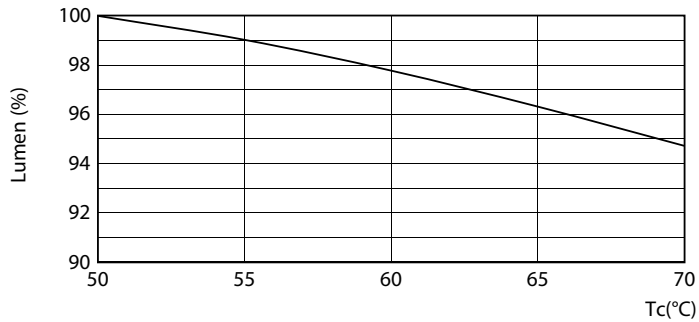
LEDtube 8-14W G5 830-850 200D DIM IF10-21

LEDtube 8-14W G5 830-850 200D DIM IF10-21



LEDtube 8-14W G5 830-850 200D DIM IF10-21

LEDtube 8-14W G5 830-850 200D DIM IF10-21



LEDtube 8-14W G5 830-850 200D DIM IF10-21

