



# Standard LED bulbs

## LEDBulb 6W E27 3000K W A55 1PF/10 BR

Standard LED bulbs are compatible with existing fixtures with a E27 holder and are designed for retrofit replacement of incandescent, halogen and energy saving bulbs. They deliver huge energy savings and minimize maintenance costs. The Standard LED bulb is the perfect bulb for your basic lighting needs. It provides the beautiful light and performance you expect from the LED technology at an affordable price.

### Product data

General Information	
Cap-Base	E27 [E27]
Nominal lifetime	25,000 hour(s)
Switching Cycle	50,000
Lighting Technology	LED
EU RoHS compliant	Yes
Light Technical	
Color Code	830 [CCT of 3000K]
Beam Angle (Nom)	150 degree(s)
Luminous Flux	560 lm
Color Designation	White (WH)
Correlated Color Temperature (Nom)	3000 K
Luminous Efficacy (rated) (Nom)	93.00 lm/W
Color Consistency	<6
Color rendering index (CRI)	80
LLMF At End Of Nominal Lifetime (Nom)	70 %
Operating and Electrical	
Line Frequency	50 to 60 Hz
Input Frequency	50 to 60 Hz
Power Consumption	6 W

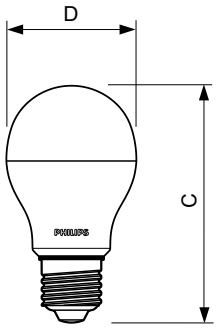
Wattage Equivalent	40 W
Starting Time (Nom)	0.5 s
Warm-up time to 60% light	0.5 s
Power Factor (Fraction)	0.7
Voltage (Nom)	100-240 V
Temperature	
T-Case Maximum (Nom)	65 °C
Controls and Dimming	
Dimmable	No
Mechanical and Housing	
Bulb Finish	Frosted
Bulb Shape	A55 [A 55mm]
Approval and Application	
Energy Consumption kWh/1000 h	- kWh
Product Data	
Order product name	LEDBulb 6W E27 3000K W A55 1PF/10 BR
Full product name	LEDBulb 6W E27 3000K W A55 1PF/10 BR

# Standard LED bulbs

Full product code	871869681633200
Order code	929001838312
Material Nr. (12NC)	929001838312
Numerator - Quantity Per Pack	1
EAN/UPC - Product/Case	8718696816332

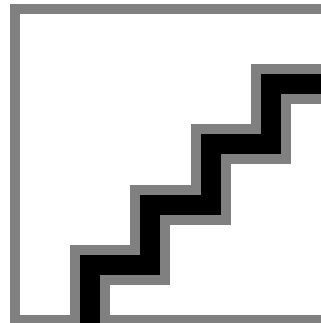
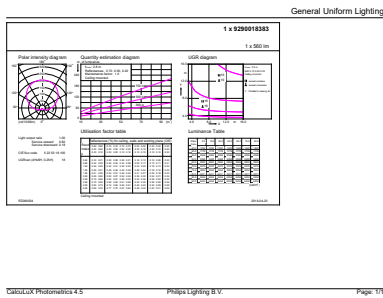
Numerator - Packs per outer box	10
EAN/UPC - Case	8718696816349

## Dimensional drawing



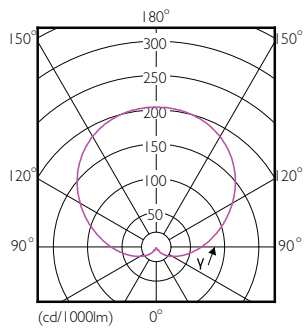
Product	LEDBulb 6W E27 3000K W A55 1PF/10 BR
---------	--------------------------------------

## Photometric data



General uniform lighting - LEDBulb 6W E27 3000K W A55 1PF/10 BR

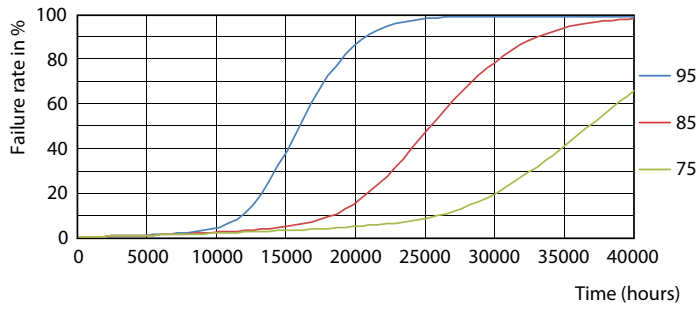
Spectral Power Distribution Colour - LEDBulb 6W E27 3000K W A55 1PF/10 BR



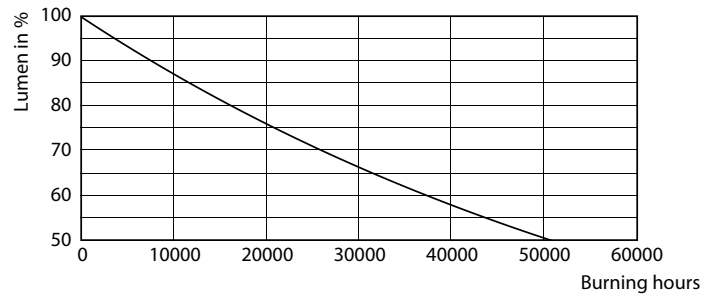
Light Distribution Diagram - LEDBulb 6W E27 3000K W A55 1PF/10 BR

# Standard LED bulbs

## Lifetime



Life Expectancy Diagram - LEDBulb 6W E27 3000K W A55 1PF/10 BR



Lumen Maintenance Diagram - LEDBulb 6W E27 3000K W A55 1PF/10 BR

