



# Standard LED bulbs

## LEDBulb13.5W E27 3000K W A67 1PF/10 BR

Standard LED bulbs are compatible with existing fixtures with a E27 holder and are designed for retrofit replacement of incandescent, halogen and energy saving bulbs. They deliver huge energy savings and minimize maintenance costs. The Standard LED bulb is the perfect bulb for your basic lighting needs. It provides the beautiful light and performance you expect from the LED technology at an affordable price.

### Product data

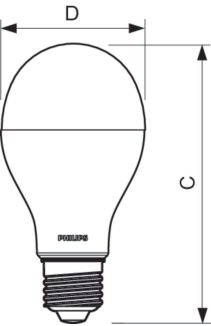
<b>General Information</b>		<b>Wattage Equivalent</b>	
Cap-Base	E27 [E27]	100 W	
Nominal lifetime	25,000 hour(s)	<b>Starting Time (Nom)</b>	
Switching Cycle	50,000	0.5 s	
Lighting Technology	LED	<b>Warm-up time to 60% light</b>	
EU RoHS compliant	Yes	0.5 s	
<b>Light Technical</b>		<b>Power Factor (Fraction)</b>	
Color Code	830 [CCT of 3000K]	0.7	
Beam Angle (Nom)	150 degree(s)	<b>Voltage (Nom)</b>	
Luminous Flux	1,521 lm	100-240 V	
Color Designation	White (WH)	<b>Temperature</b>	
Correlated Color Temperature (Nom)	3000 K	T-Case Maximum (Nom)	
Luminous Efficacy (rated) (Nom)	112.00 lm/W	85 °C	
Color Consistency	<6	<b>Controls and Dimming</b>	
Color rendering index (CRI)	80	Dimmable	
LLMF At End Of Nominal Lifetime (Nom)	70 %	No	
<b>Operating and Electrical</b>		<b>Mechanical and Housing</b>	
Line Frequency	50 to 60 Hz	Bulb Finish	
Input Frequency	50 to 60 Hz	Frosted	
Power Consumption	13.5 W	Bulb Shape	
		A67 [A 67mm]	
		<b>Approval and Application</b>	
		Energy Consumption kWh/1000 h	
		- kWh	
		<b>Product Data</b>	
		Order product name	
		LEDBulb13.5W E27 3000K W A67 1PF/10 BR	
		Full product name	
		LEDBulb13.5W E27 3000K W A67 1PF/10 BR	

Standard LED bulbs

Full product code	871869681641700
Order code	929001838912
Material Nr. (12NC)	929001838912
Numerator - Quantity Per Pack	1
EAN/UPC - Product/Case	8718696816417

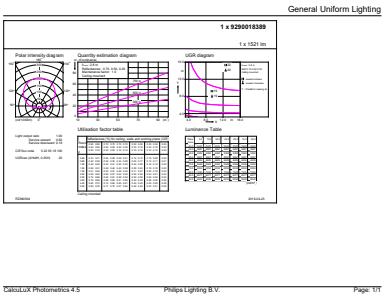
Numerator - Packs per outer box	10
EAN/UPC - Case	8718696816424

Dimensional drawing

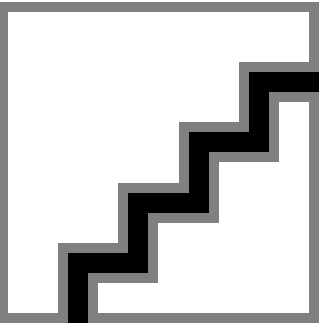


Product
LEDBulb13.5W E27 3000K W A67 1PF/10 BR

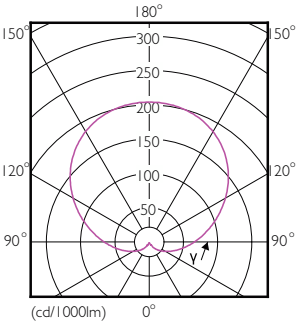
Photometric data



General uniform lighting - LEDBulb13.5W E27 3000K W A67 1PF/10 BR



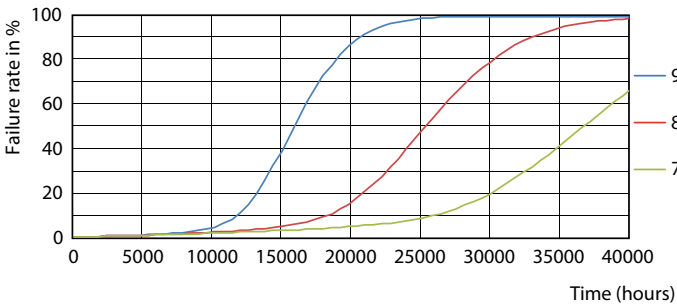
Spectral Power Distribution Colour - LEDBulb13.5W E27 3000K W A67 1PF/10 BR



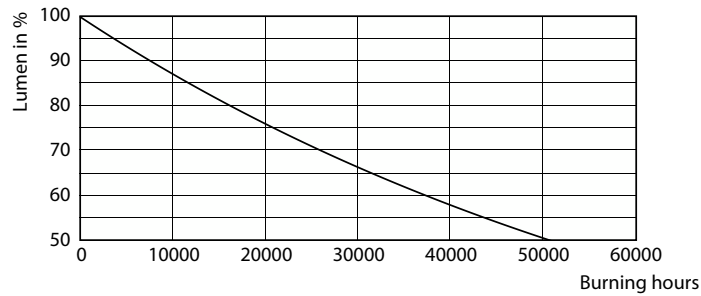
Light Distribution Diagram - LEDBulb13.5W E27 3000K W A67 1PF/10 BR

Standard LED bulbs

Lifetime



Life Expectancy Diagram - LEDBulb13.5W E27 3000K W A67 1PF/10 BR



Lumen Maintenance Diagram - LEDBulb13.5W E27 3000K W A67 1PF/10 BR

