



Standard LED bulbs

LEDBulb13.5W E27 6500K W A67 1PF/10 BR

Standard LED bulbs are compatible with existing fixtures with a E27 holder and are designed for retrofit replacement of incandescent, halogen and energy saving bulbs. They deliver huge energy savings and minimize maintenance costs. The Standard LED bulb is the perfect bulb for your basic lighting needs. It provides the beautiful light and performance you expect from the LED technology at an affordable price.

Product data

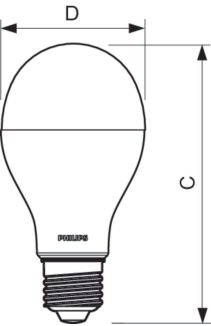
General Information		Wattage Equivalent	
Cap-Base	E27 [E27]	100 W	
Nominal lifetime	25,000 hour(s)	Starting Time (Nom)	
Switching Cycle	50,000	0.5 s	
Lighting Technology	LED	Warm-up time to 60% light	
EU RoHS compliant	Yes	0.5 s	
Light Technical		Power Factor (Fraction)	
Color Code	865 [CCT of 6500K]	0.7	
Beam Angle (Nom)	150 degree(s)	Voltage (Nom)	
Luminous Flux	1,521 lm	100-240 V	
Color Designation	Cool Daylight	Temperature	
Correlated Color Temperature (Nom)	6500 K	T-Case Maximum (Nom)	
Luminous Efficacy (rated) (Nom)	112.00 lm/W	85 °C	
Color Consistency	<6	Controls and Dimming	
Color rendering index (CRI)	80	Dimmable	
LLMF At End Of Nominal Lifetime (Nom)	70 %	No	
Operating and Electrical		Mechanical and Housing	
Line Frequency	50 to 60 Hz	Bulb Finish	
Input Frequency	50 to 60 Hz	Frosted	
Power Consumption	13.5 W	Bulb Shape	
		A67 [A 67mm]	
		Approval and Application	
		Energy Consumption kWh/1000 h	
		- kWh	
		Product Data	
		Order product name	
		LEDBulb13.5W E27 6500K W A67 1PF/10 BR	
		Full product name	
		LEDBulb13.5W E27 6500K W A67 1PF/10 BR	

Standard LED bulbs

Full product code	871869681643100
Order code	929001839012
Material Nr. (12NC)	929001839012
Numerator - Quantity Per Pack	1
EAN/UPC - Product/Case	8718696816431

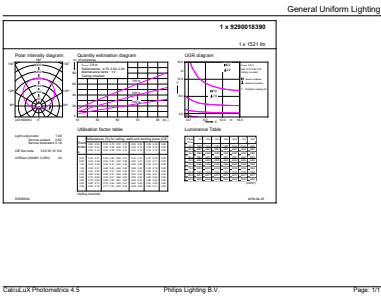
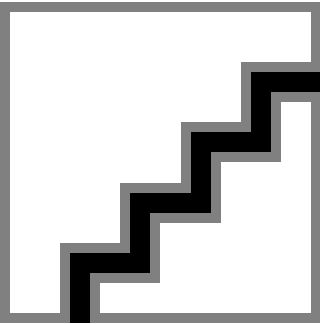
Numerator - Packs per outer box	10
EAN/UPC - Case	8718696816448

Dimensional drawing



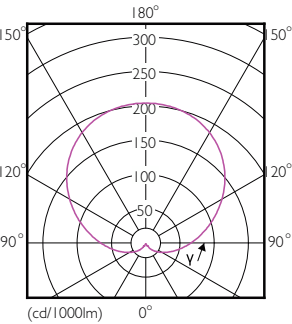
Product
LEDBulb13.5W E27 6500K W A67 1PF/10 BR

Photometric data



Spectral Power Distribution Colour - LEDBulb13.5W E27 6500K W A67 1PF/10 BR

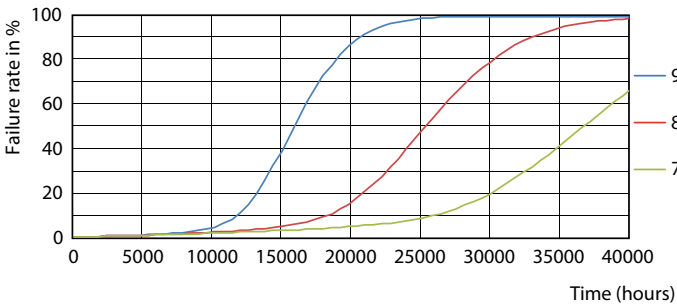
General uniform lighting - LEDBulb13.5W E27 6500K W A67 1PF/10 BR



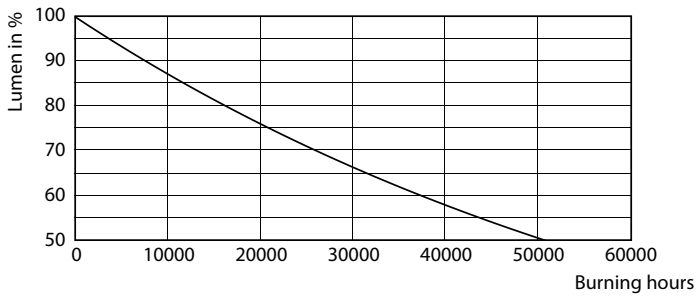
Light Distribution Diagram - LEDBulb13.5W E27 6500K W A67 1PF/10 BR

Standard LED bulbs

Lifetime



Life Expectancy Diagram - LEDBulb13.5W E27 6500K W A67 1PF/10 BR



Lumen Maintenance Diagram - LEDBulb13.5W E27 6500K W A67 1PF/10 BR

