



PL-S

5PL-S/LED/13H/840/IF5/P/2P 20/1

Philips LED PL-S lamps make the transition to LED from CFL lamps as simple as replacing a lamp. The InstantFit (UL Type A) 2-pin PL-S LED lamps are available in a wide array of color temperatures. They quickly and effectively replace 13W 2-pin compact fluorescent PL-S lamps.

Product data

General Information	
Base	GX23 [GX23]
RoHS mark	RoHS mark
Nominal Lifetime (Nom)	50000 h
Switching Cycle	50000X
B50L70	50000 h
Light Technical	
Color Code	841 [CCT of 4100K (841)]
Beam Angle (Nom)	120 °
Initial lumen (Nom)	580 lm
Luminous Flux (Rated) (Nom)	580 lm
Rated Beam Angle	120 °
Correlated Color Temperature (Nom)	4000 K
Color Consistency	<6
Color Rendering Index (Nom)	82
LLMF At End Of Nominal Lifetime (Nom)	70 %
Operating and Electrical	
Input Frequency	50 to 60 Hz
Power (Rated) (Nom)	5 W
Lamp Current (Max)	50 mA
Lamp Current (Min)	15 mA

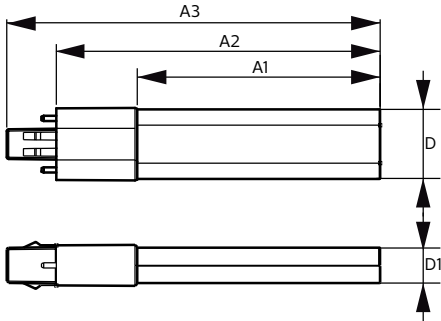
Starting Time (Nom)	0.5 s
Warm Up Time to 60% Light (Nom)	0.5 s
Power Factor (Nom)	0.9
Voltage (Nom)	120-277 V
Temperature	
T-Ambient (Max)	45 °C
T-Ambient (Min)	-20 °C
T-Storage (Max)	65 °C
T-Storage (Min)	-40 °C
T-Case Maximum (Nom)	75 °C
Controls and Dimming	
Dimmable	No
Mechanical and Housing	
Height	15.8 mm
Approval and Application	
Energy Saving Product	Yes
Approbation Marks	UL certificate RoHS compliance

PL-S

Product Data	
Order product name	5PL-S/LED/13H/840/IF5/P/2P 20/1
EAN/UPC - Product	046677529581
Order code	529586
Numerator - Quantity Per Pack	1
Numerator - Packs per outer box	20

Material Nr. (12NC)	929001863104
Net Weight (Piece)	0.043 kg
Model Number	9290018631

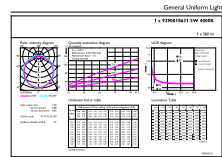
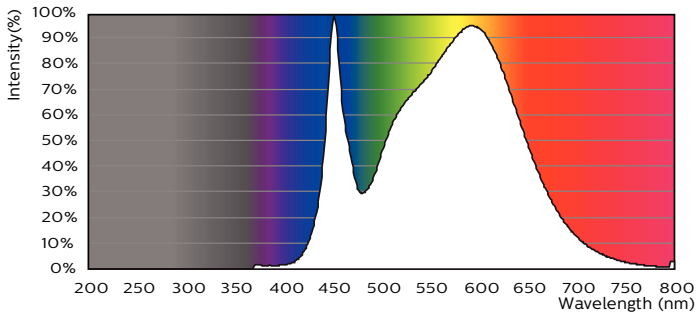
Dimensional drawing



PLED PLS 120-277V 5-13W 580lm 4000K GX23

Product	D	D1	A1	A2	A3
5PL-S/LED/13H/840/IF5/P/2P	31.1 mm	15.8 mm	108 mm	144 mm	166 mm
20/1					

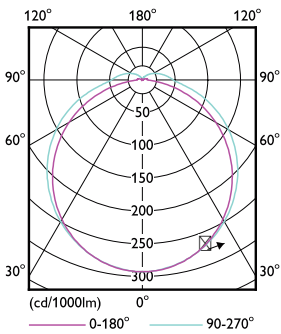
Photometric data



General Uniform Lighting

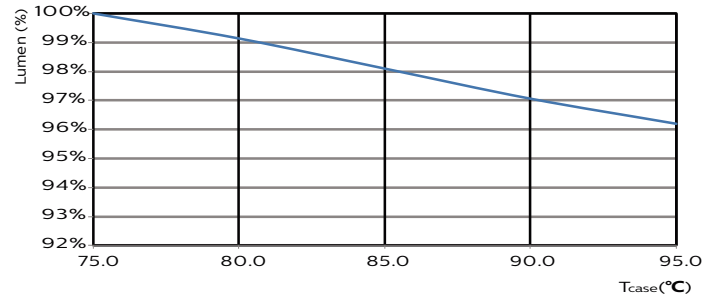
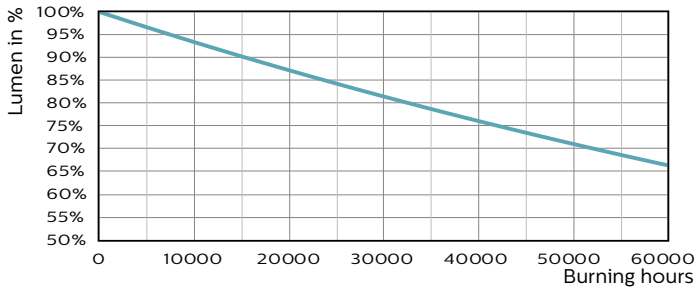
LEDtube PLS 5W GX23 840 2P 12D ND

LEDtube PLS 5W GX23 840 2P 12D ND



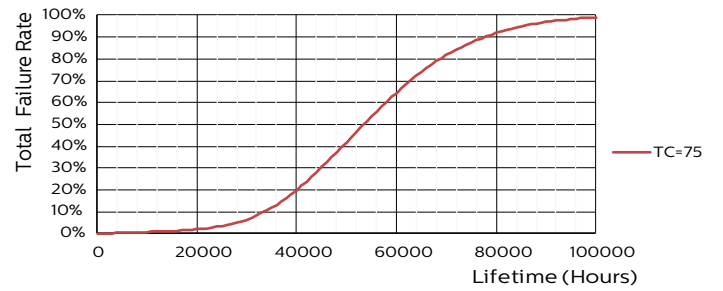
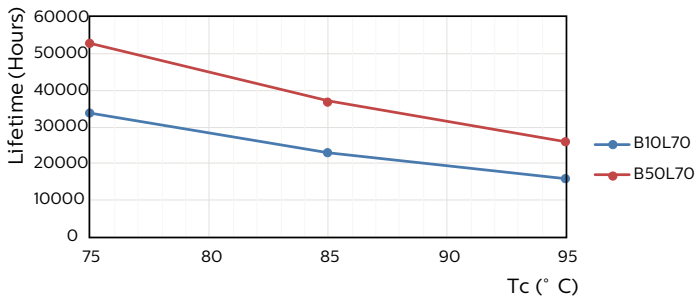
LEDtube PLS 5W GX23 827 2P 12D ND

Lifetime



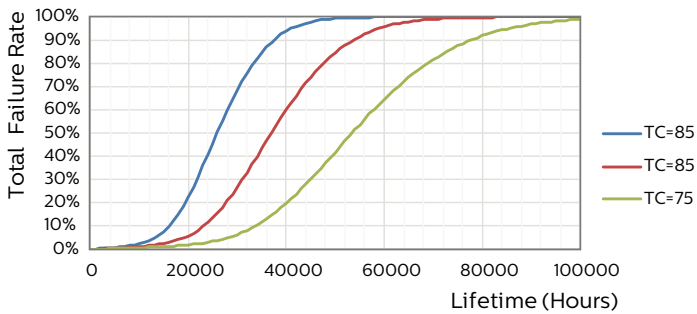
LEDtube PLS 5W GX23 827 2P 12D ND

LEDtube PLS 5W GX23 827 2P 12D ND



LEDtube PLS 5W GX23 827 2P 12D ND

LEDtube PLS 5W GX23 827 2P 12D ND



LEDtube PLS 5W GX23 827 2P 12D ND

