



# CorePro LED tube Universal T8

## CorePro LEDtube UN 1200mm HO 18W865 T8

The new Philips CorePro LEDtube Universal T8 brings simplicity to your lighting project. You can forget about the driver technology. Thanks to a unique design, the Philips CorePro LEDtube Universal T8 directly fits into luminaires operating either on Electro Magnetic ballasts, HF Electronic ballasts or mains power connections. So simple to operate and no need to carry double stock of products! Perfectly safe, reliable and easy to install, the Philips CorePro LEDtube Universal T8 is the ideal alternative to standard fluorescent tubes to save energy and reduce investment.

### Product data

General Information		Warm-up time to 60% light (nom.)	
Cap base	G13 [ Medium Bi-Pin Fluorescent]		0.5 s
Nominal lifetime (nom.)	30000 h	Power factor (nom.)	0.97
Switching cycle	50000X	Voltage (Nom)	220-240 V
Light Technical		Temperature	
Colour code	865 [ CCT of 6,500 K]	T ambient (max.)	45 °C
Beam Angle (Nom)	240 °	T ambient (min.)	-20 °C
Luminous flux (nom.)	2000 lm	T storage (max.)	65 °C
Correlated colour temperature (nom.)	6500 K	T storage (min.)	-40 °C
Colour consistency	<6	T-Case maximum (nom.)	65 °C
Color rendering index (nom.)	80	Controls and Dimming	
LLMF at end of nominal lifetime (nom.)	70 %	Dimmable	No
Operating and Electrical		Mechanical and Housing	
Input frequency	50 to 60 Hz	Bulb material	Glass
Power (Rated) (Nom)	18 W	Product length	1200 mm
Starting time (nom.)	0.5 s		

# CorePro LED tube Universal T8

## Approval and Application

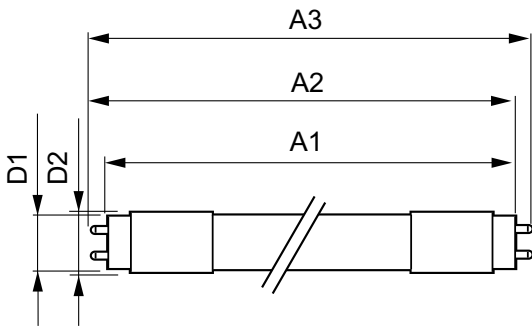
Energy efficiency label (EEL)	A+
Energy-saving product	Yes
Approval marks	CE marking RoHS compliance KEMA Keur certificate
Energy Consumption kWh/1000 h	18 kWh

## Product Data

Full product code	871869680170300
-------------------	-----------------

Order product name	CorePro LEDtube UN 1200mm HO 18W865 T8
EAN/UPC – product	8718696801703
Order code	80170300
Numerator – quantity per pack	1
Numerator – packs per outer box	10
Material no. (12NC)	929001869402
Net weight (piece)	0.215 kg

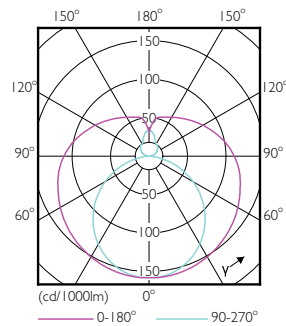
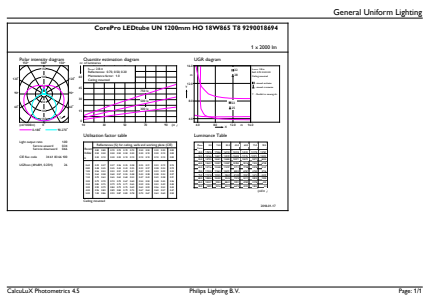
## Dimensional drawing



TLED 1200mm UNV16W-36W 2100lm 6500K

Product	D1	D2	A1	A2	A3
CorePro LEDtube UN 1200mm HO 18W865 T8	27.9 mm	28 mm	1199.4 mm	1205.3 mm	1213.6 mm

## Photometric data

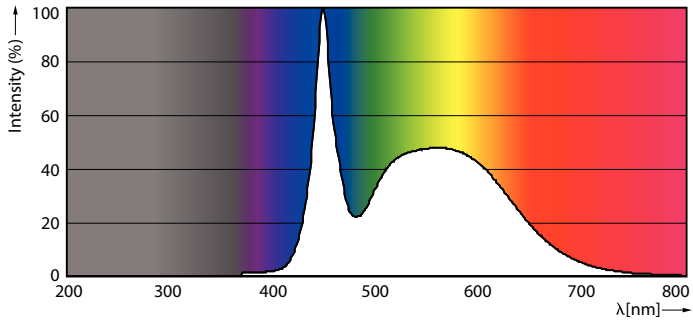


18W G13 865 6500K

18W G13 830 3000K

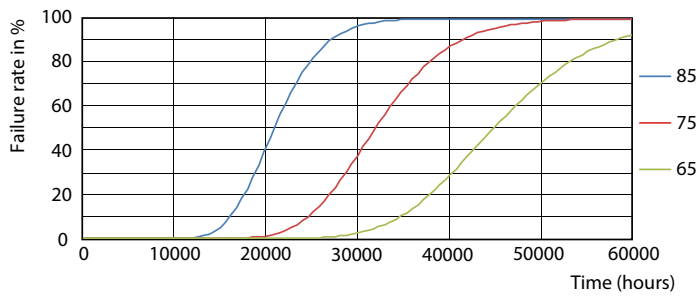
# CorePro LED tube Universal T8

## Photometric data

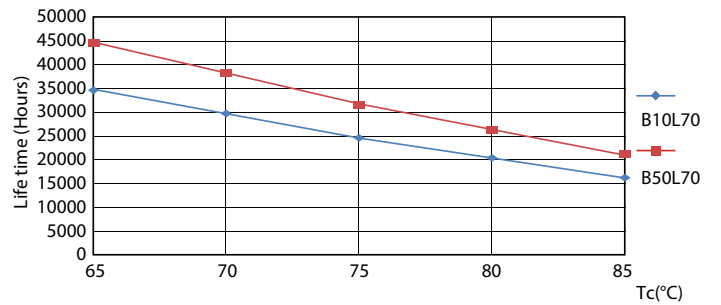


18W G13

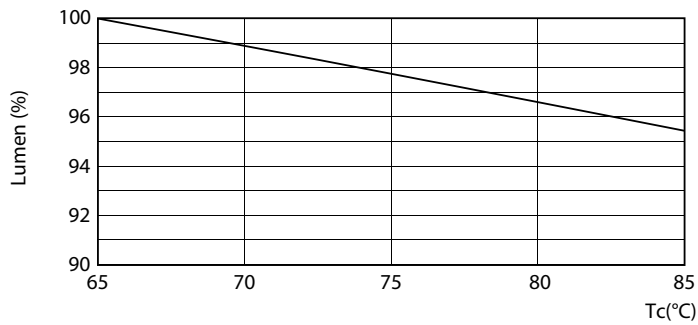
## Lifetime



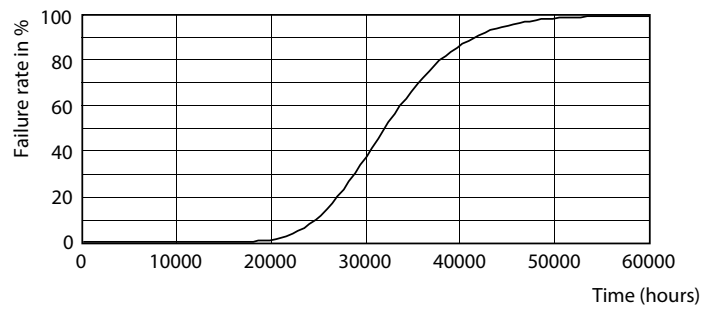
18W G13



18W G13



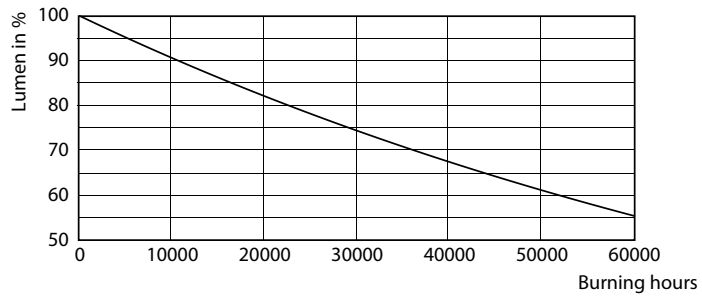
18W G13



18W G13

# CorePro LED tube Universal T8

## Lifetime



18W G13

