



CorePro LED tube Universal T8



CorePro LEDtube UN 1500mm HO 23W865 T8

The new Philips CorePro LEDtube Universal T8 brings simplicity to your lighting project. You don't need to pay attention to the driver technology anymore. Thanks to a unique design, Philips CorePro LEDtube Universal T8 directly fits in luminaires operating either on Electro Magnetic ballasts or HF Electronic ballasts or mains power connection. So simple to operate and no need to carry double stock of products! Perfectly safe, reliable & easy to install Philips CorePro LEDtube Universal T8 is the ideal alternative to standard fluorescent tubes to save energy and lower investment.

Product data

General Information		Color rendering index (CRI)	
Cap-Base	G13 [Medium Bi-Pin Fluorescent]		80
Nominal lifetime	50,000 hour(s)	LLMF At End Of Nominal Lifetime (Nom)	70 %
Switching Cycle	50,000	Flickering value (PstLM) - Flickering value as per EN 61000-3-3	1
Lighting Technology	LED	Stroboscopic effect visibility measure (SVM)	0.9
Flux measurement reference	Sphere	Photobiological safety according to EN 62471	RG0
CE mark	Yes		
EU RoHS compliant	Yes		
Light Technical		Operating and Electrical	
Color Code	865 [CCT of 6500K]	Line Frequency	50 to 60 Hz
Beam Angle (Nom)	240 degree(s)	Input Frequency	50 to 60 Hz
Luminous Flux	2,700 lm	Power Consumption	23 W
Color Designation	Cool Daylight	Lamp Current (Nom)	130 mA
Correlated Color Temperature (Nom)	6500 K	Starting Time (Nom)	0.5 s
Luminous Efficacy (rated) (Nom)	117 lm/W	Warm-up time to 60% light	0.5 s
Color Consistency	<6	Power Factor (Fraction)	0.9
		Voltage (Nom)	220-240 V
		LED alternative to fluorescent lamp power	58 W

CorePro LED tube Universal T8

Inrush current at mains	9.6
Max. lamp no. on MCB B type 10A – Mains	80
Max. lamp no. on MCB B type 10A – EM ballast without Comp. Cap.	80
Max. lamp no. on MCB B type 10A – EM ballast with Comp. Cap.	16
Max. lamp no. on MCB B type 16A – Mains	128
Max. lamp no. on MCB B type 16A – EM ballast without Comp. Cap.	128
Max. lamp no. on MCB B type 16A – EM ballast with Comp. Cap.	25
Ballast Compatibility	Universal

Temperature

Ambient temperature range	-20 °C to 45 °C
T-Case Maximum (Nom)	60 °C

Controls and Dimming

Dimmable	No
----------	----

Mechanical and Housing

Bulb Finish	Frosted
Bulb Material	Glass
Product Length	1,500 mm

Bulb Shape	T8
------------	----

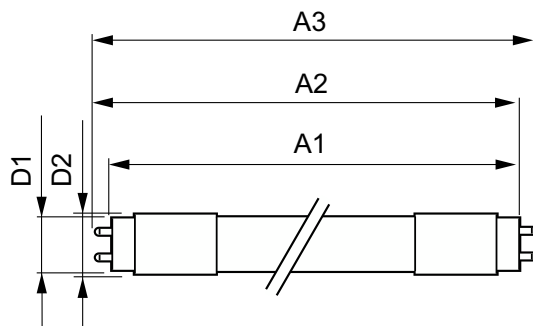
Approval and Application

Energy Efficiency Class	E
Energy Saving Product	Yes
Approval Marks	RoHS compliance TUV CE marking KEMA Keur certificate
Energy Consumption kWh/1000 h	23 kWh
EPREL Registration Number	1315792

Product Data

Order product name	CorePro LEDtube UN 1500mm HO 23W865 T8
Full product name	CorePro LEDtube UN 1500mm HO 23W865 T8
Full product code	871869680176500
Order code	80176500
Material Nr. (12NC)	929001869702
Numerator - Quantity Per Pack	1
EAN/UPC - Product/Case	8718696801765
Numerator - Packs per outer box	10
EAN/UPC - Case	8718696801772

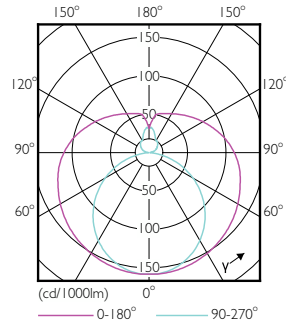
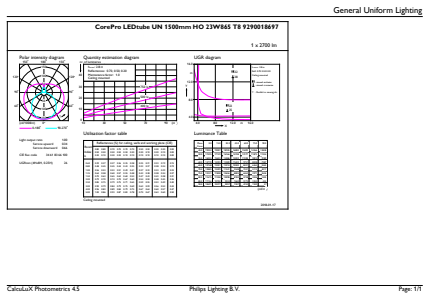
Dimensional drawing



Product	D1	D2	A1	A2	A3
CorePro LEDtube UN 1500mm HO 23W865 T8	27.9 mm	28 mm	1,500 mm	1,505.9 mm	1,514.2 mm

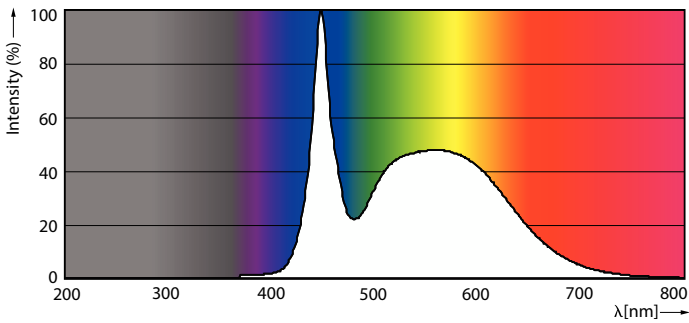
CorePro LED tube Universal T8

Photometric data



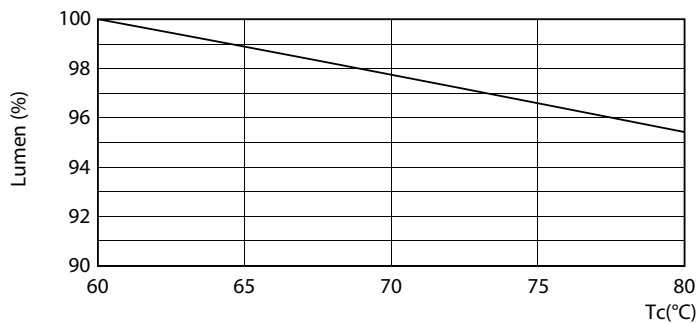
General uniform lighting - CorePro LEDtube UN 1500mm HO 23W865 T8

Light Distribution Diagram

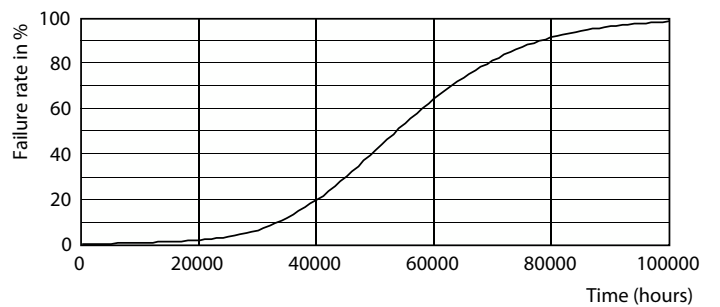


Spectral Power Distribution Colour - CorePro LEDtube UN 1500mm HO 23W865 T8

Lifetime



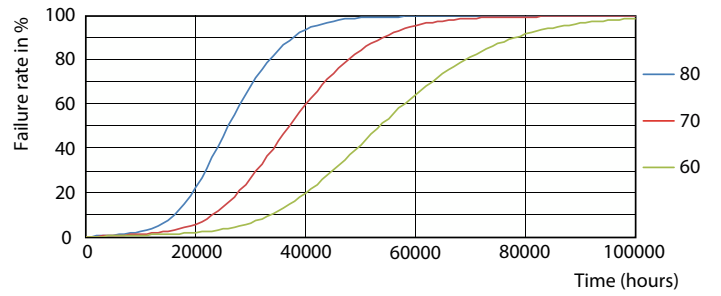
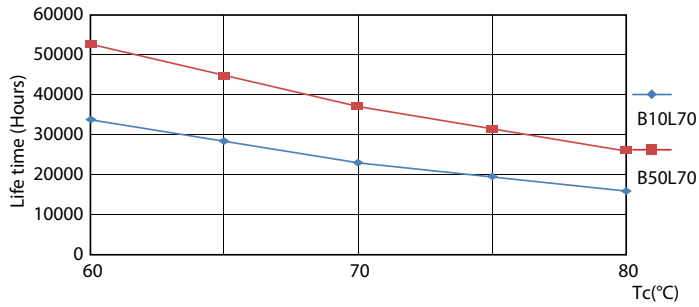
Lumen Maintenance Diagram - CorePro LEDtube UN 1500mm HO 23W865 T8



Life Expectancy Diagram - CorePro LEDtube UN 1500mm HO 23W865 T8

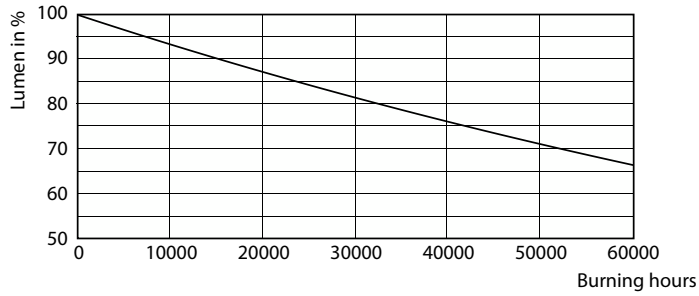
CorePro LED tube Universal T8

Lifetime



Life Expectancy Diagram - CorePro LEDtube UN 1500mm HO 23W865 T8

Life Expectancy Diagram - CorePro LEDtube UN 1500mm HO 23W865 T8



Lumen Maintenance Diagram - CorePro LEDtube UN 1500mm HO 23W865 T8

