

# Specialty LEDtube

## 14T8/48-835/IF20/VLC 10/1

Philips specialty LEDtube integrates a LED light source into a traditional fluorescent form factor. This product is the ideal solution for relamping to serve multi-purpose usage: it meets general lighting requirements, offers significant energy savings, and special function such as Visible Light Communication.

### Product data

General Information	
Cap-Base	G13 [ Medium Bi-Pin Fluorescent]
EU RoHS compliant	Yes
Nominal Lifetime (Nom)	70000 h
Switching Cycle	50000X
Light Technical	
Color Code	835 [ CCT of 3500K]
Beam Angle (Nom)	160 °
Luminous Flux (Nom)	2000 lm
Color Designation	White (WH)
Correlated Color Temperature (Nom)	3500 K
Luminous Efficacy (rated) (Nom)	142.00 lm/W
Color Consistency	<6
Color Rendering Index (Nom)	82
LLMF At End Of Nominal Lifetime (Nom)	70 %
Operating and Electrical	
Input Frequency	20000-120000 Hz
Power (Nom)	14 W
Lamp Current (Max)	400 mA
Lamp Current (Min)	130 mA
Starting Time (Nom)	0.5 s

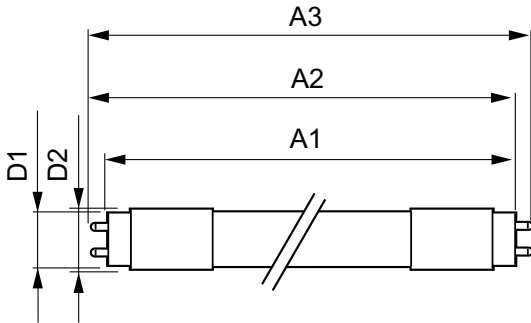
Warm Up Time to 60% Light (Nom)	0.5 s
Power Factor (Nom)	0.9
Voltage (Nom)	120-277, 347 V
Temperature	
T-Ambient (Max)	45 °C
T-Ambient (Min)	-20 °C
T-Storage (Max)	65 °C
T-Storage (Min)	-40 °C
T-Case Maximum (Nom)	50 °C
Controls and Dimming	
Dimmable	No
Mechanical and Housing	
Product Length	1200 mm
Approval and Application	
Energy Efficiency Label (EEL)	Not applicable
Energy Saving Product	Yes
Approval Marks	UL certificate RoHS compliance DLC compliance

# Specialty LEDtube

Energy Consumption kWh/1000 h	- kWh
<b>Product Data</b>	
Order product name	14T8/48-835/IF20/VLC 10/1
EAN/UPC - Product	046677529987
Order code	929001870104

Numerator - Quantity Per Pack	1
Numerator - Packs per outer box	10
Material Nr. (12NC)	929001870104
Net Weight (Piece)	0.220 kg

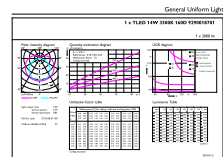
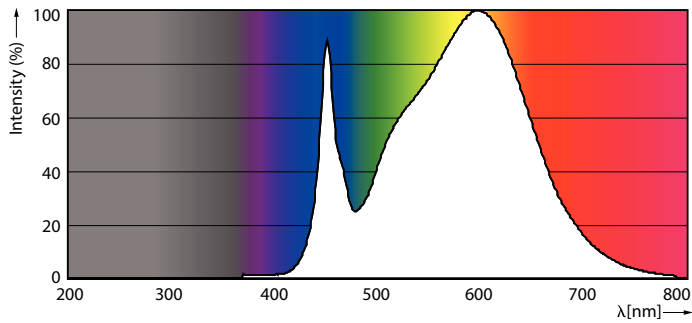
## Dimensional drawing



TLED 4ft 120V 14-32W 2100lm 3500K G13

Product	D1	D2	A1	A2	A3
14T8/48-835/IF20/VLC	25.7 mm	26.3 mm	1198.1 mm	1205.2 mm	1212.3 mm
10/1					

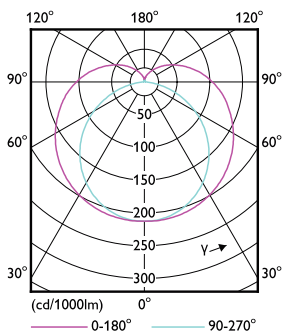
## Photometric data



© 2020 Philips Lighting B.V. Philips Lighting B.V. Page 1/1

14W G13

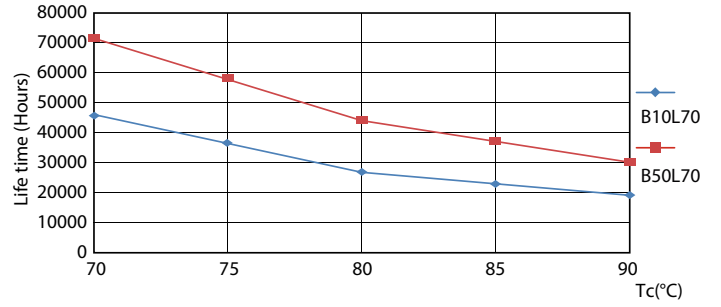
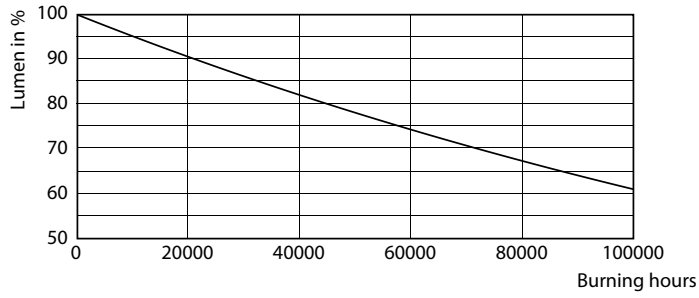
14W G13 835 3500K



14W G13 835 3500K

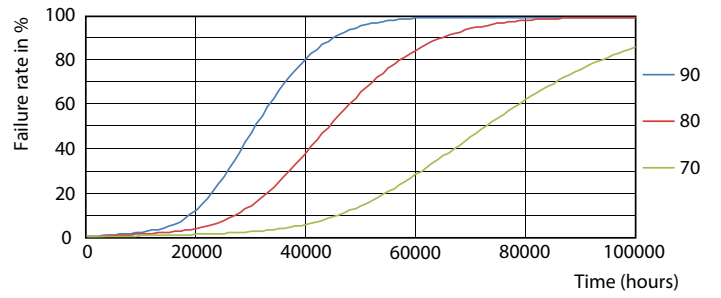
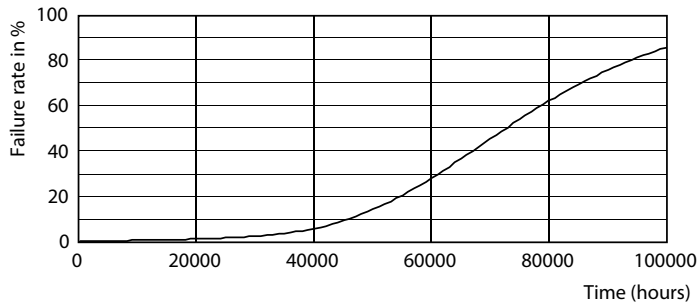
# Specialty LEDtube

## Lifetime



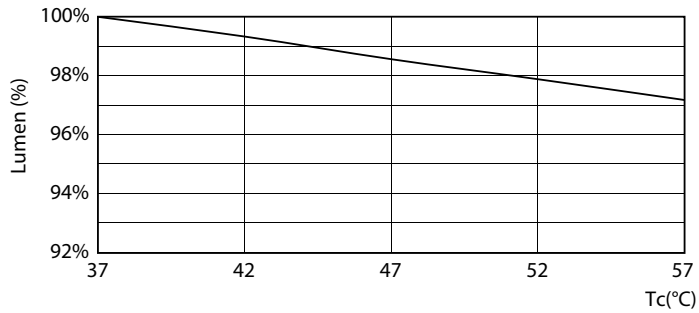
14W G13

14W G13



14W G13

14W G13



14W G13

## Specialty LEDtube

