

Other LEDtube

14T8/48-840/IF21/VLC 10/1

Philips LEDtube integrates a LED light source into a traditional fluorescent form factor. This product is the ideal solution for uplamping in general lighting applications: it meets basic lighting requirements, offers significant energy savings, and is environmentally friendly.

Product data

General Information	
Base	G13 [Medium Bi-Pin Fluorescent]
EU RoHS compliant	Yes
Nominal Lifetime (Nom)	70000 h
Switching Cycle	50000X
Light Technical	
Color Code	841 [CCT of 4100K (841)]
Beam Angle (Nom)	160 °
Initial lumen (Nom)	2100 lm
Correlated Color Temperature (Nom)	4000 K
Color Consistency	<6
Color Rendering Index (Nom)	82
LLMF At End Of Nominal Lifetime (Nom)	70 %
Operating and Electrical	
Input Frequency	20000-120000 Hz
Power (Rated) (Nom)	14 W
Lamp Current (Max)	400 mA
Lamp Current (Min)	130 mA
Starting Time (Nom)	0.5 s
Warm Up Time to 60% Light (Nom)	0.5 s
Power Factor (Nom)	0.9

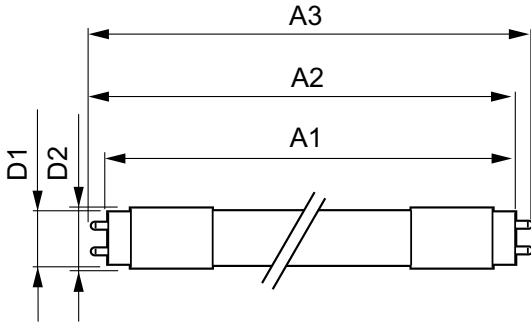
Voltage (Nom)	120-277, 347 V
Temperature	
T-Ambient (Max)	45 °C
T-Ambient (Min)	-20 °C
T-Storage (Max)	65 °C
T-Storage (Min)	-40 °C
T-Case Maximum (Nom)	50 °C
Controls and Dimming	
Dimmable	No
Mechanical and Housing	
Product Length	1200 mm
Approval and Application	
Energy Saving Product	Yes
Approbation Marks	UL certificate RoHS compliance DLC compliance
Product Data	
Order product name	14T8/48-840/IF21/VLC 10/1
EAN/UPC - Product	046677529994

Other LEDtube

Order code	529999
Numerator - Quantity Per Pack	1
Numerator - Packs per outer box	10
Material Nr. (12NC)	929001870204

Net Weight (Piece)	0.220 kg
Model Number	9290018702

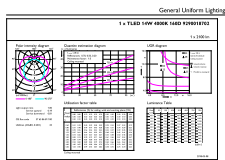
Dimensional drawing



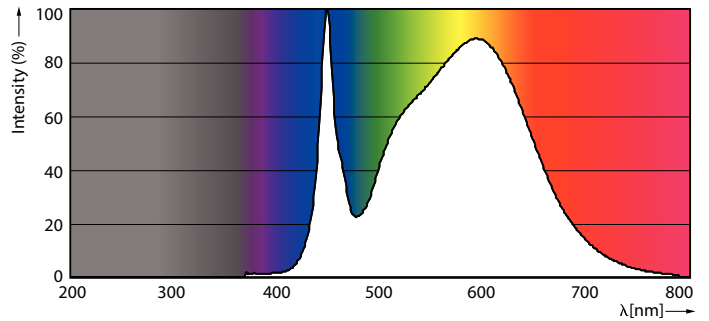
TLED 4ft 120V 14-32W 2100lm 4000K G13

Product	D1	D2	A1	A2	A3
14T8/48-840/IF21/VLC 10/1	25.7 mm	26.3 mm	1198.1 mm	1205.2 mm	1212.3 mm

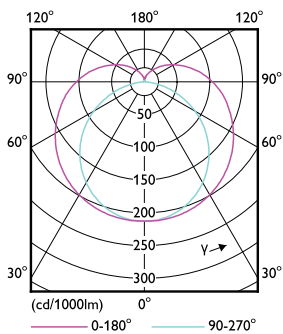
Photometric data



14W G13 840 4000K



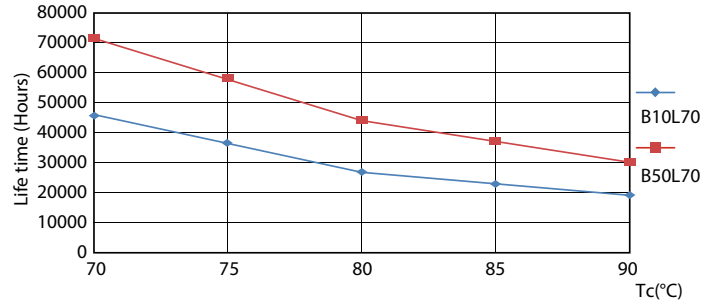
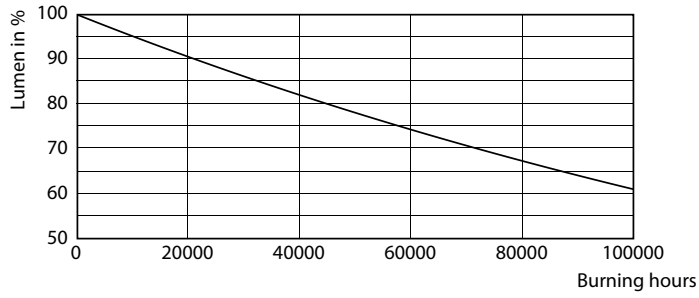
14W G13



14W G13 835 3500K

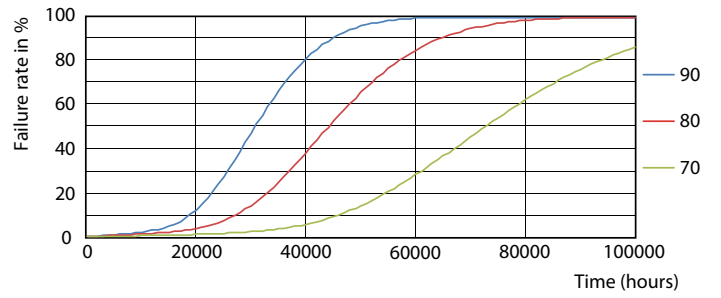
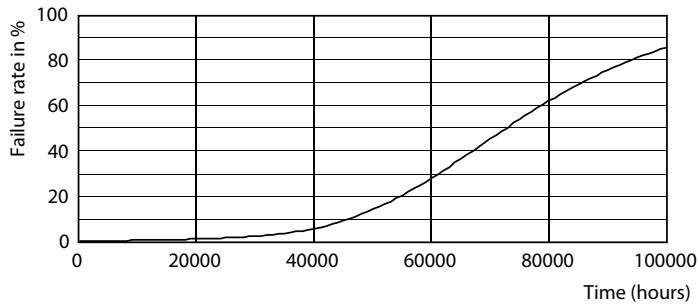
Other LEDtube

Lifetime



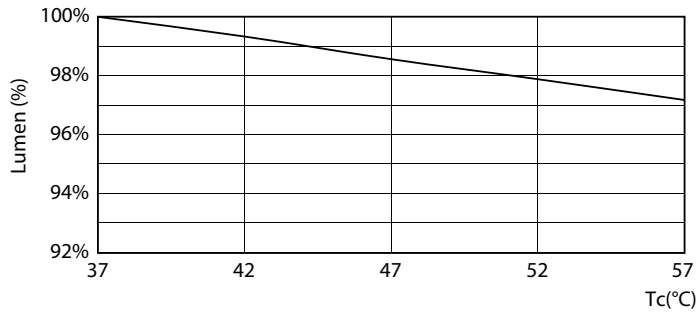
14W G13

14W G13



14W G13

14W G13



14W G13

Other LEDtube

