

T8

12T8/MAS/48-835/MF17/G 10/1

Our TLEDs are available in InstantFit (Type A / Type C) or MainsFit (Ballast bypass / Type B) versions. The InstantFit lamps work on a broad variety of ballasts and LED drivers. Only InstantFit has over 15,000 lamp & ballast combinations delivering even light output, energy savings and a long lifetime. Our MainsFit products feature a double-ended design, simplifying installation while a proprietary safety circuit minimizes a shock risk. Lamp sizes range from 2-foot to 8-foot and U-bend with a variety of lumen outputs.

Product data

| General Information | |
|---------------------------------------|----------------------------------|
| Base | G13 [Medium Bi-Pin Fluorescent] |
| Nominal Lifetime (Nom) | 50000 h |
| Switching Cycle | 50000X |
| B50L70 | 50000 h |
| Light Technical | |
| Color Code | 835 [CCT of 3500K] |
| Beam Angle (Nom) | 240 ° |
| Initial lumen (Nom) | 1700 lm |
| Luminous Flux (Rated) (Nom) | 1700 lm |
| Rated Beam Angle | 240 ° |
| Correlated Color Temperature (Nom) | 3500 K |
| Color Consistency | <6 |
| Color Rendering Index (Nom) | 80 |
| LLMF At End Of Nominal Lifetime (Nom) | 70 % |
| Operating and Electrical | |
| Input Frequency | 50 to 60 Hz |
| Power (Rated) (Nom) | 12 W |

| | |
|---------------------------------|-----------|
| Lamp Current (Max) | 120 mA |
| Lamp Current (Min) | 40 mA |
| Starting Time (Nom) | 0.5 s |
| Warm Up Time to 60% Light (Nom) | 0.5 s |
| Power Factor (Nom) | 0.9 |
| Voltage (Nom) | 120-277 V |

| Temperature | |
|----------------------|--------|
| T-Ambient (Max) | 45 °C |
| T-Ambient (Min) | -20 °C |
| T-Storage (Max) | 65 °C |
| T-Storage (Min) | -40 °C |
| T-Case Maximum (Nom) | 70 °C |

| Controls and Dimming | |
|----------------------|----|
| Dimmable | No |

| Mechanical and Housing | |
|------------------------|---------|
| Product Length | 1200 mm |

Approval and Application

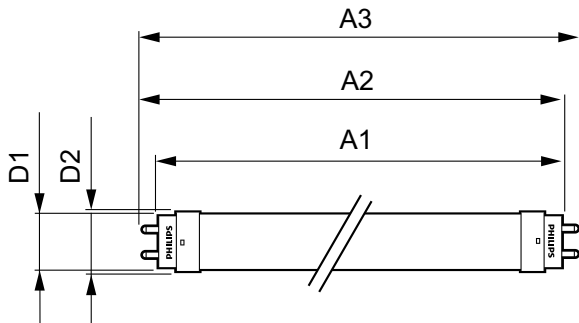
| | |
|-----------------------|---|
| Energy Saving Product | Yes |
| Approval Marks | RoHS compliance UL certificate DLC compliance |

Product Data

| | |
|--------------------|-----------------------------|
| Order product name | 12T8/MAS/48-835/MF17/G 10/1 |
| EAN/UPC - Product | 046677532680 |

| | |
|---------------------------------|--------------|
| Order code | 532689 |
| Numerator - Quantity Per Pack | 1 |
| Numerator - Packs per outer box | 10 |
| Material Nr. (12NC) | 929001876934 |
| Net Weight (Piece) | 0.215 kg |
| Model Number | 9290018769A |

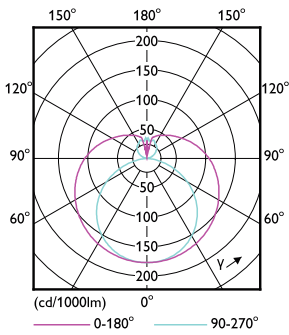
Dimensional drawing



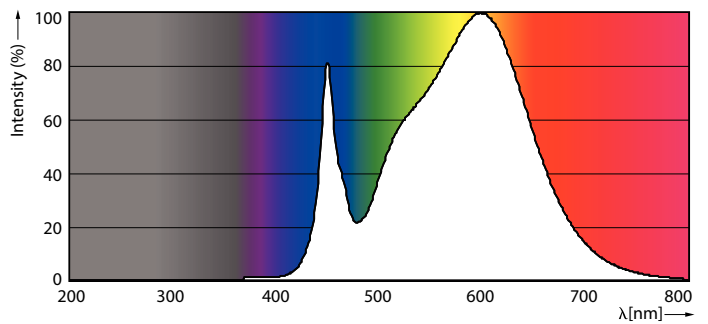
Performance TypeB 1800lm 12W

| Product | D1 | D2 | A1 | A2 | A3 |
|-----------------------------|---------|-------|---------|---------|---------|
| 12T8/MAS/48-835/MF17/G 10/1 | 25.7 mm | 28 mm | 1198 mm | 1205 mm | 1212 mm |

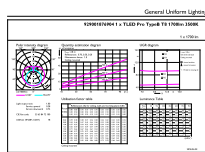
Photometric data



LEDtube PRO 12W G13 830 24D ND

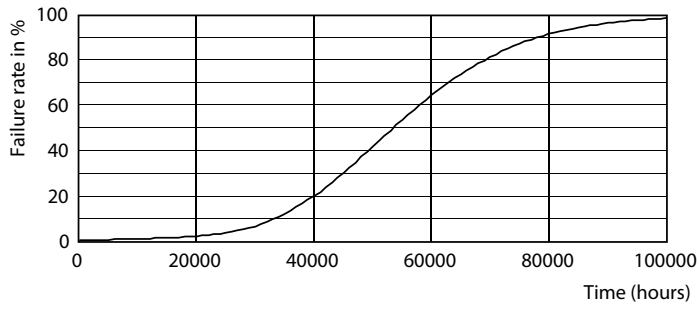


LEDtube PRO 12W G13 835 24D ND

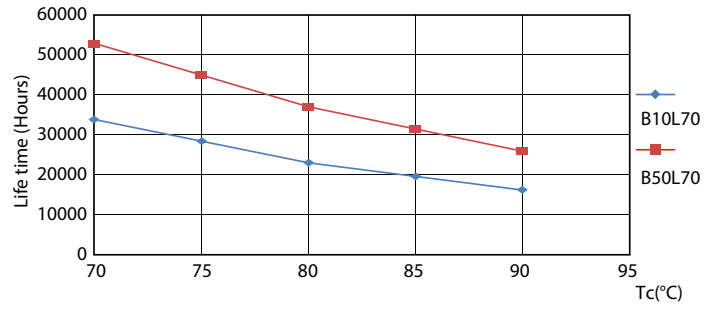


LEDtube PRO 12W G13 835 24D ND

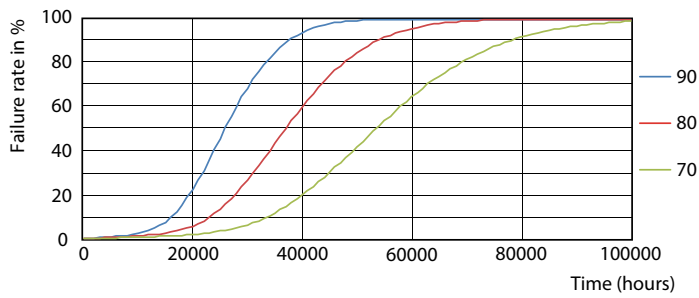
Lifetime



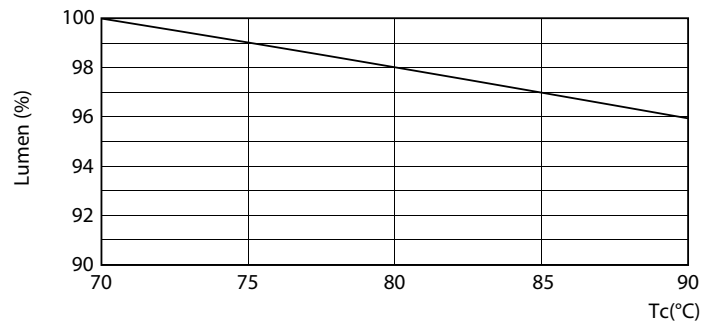
LEDtube PRO 12W G13 830 24D ND



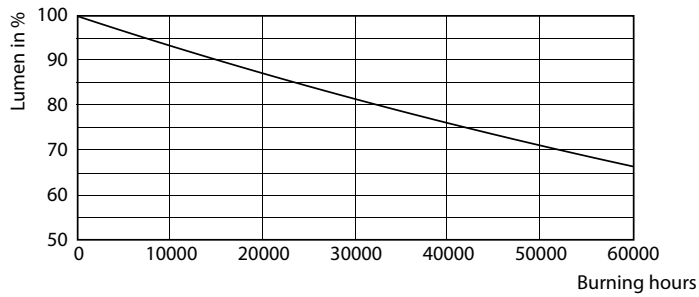
LEDtube PRO 12W G13 830 24D ND



LEDtube PRO 12W G13 830 24D ND



LEDtube PRO 12W G13 830 24D ND



LEDtube PRO 12W G13 830 24D ND

