



# MASTER LEDtube EM/ Mains T8

## MAS LEDtube 600mm HO VWV 10W 840 T8

The Philips MASTER LEDtube integrates a LED light source into a traditional fluorescent form factor. Its unique design creates a perfectly uniform visual appearance, which cannot be distinguished from traditional fluorescent. These T8 LED tubes are the right choice for absolute performance and are designed to stand up to everyday conditions. Unparalleled savings thanks to low energy consumption and an exceptionally long lifetime ensure this tube masters every demanding application.

### Warnings and Safety

- NOTE: The overall energy efficiency and light distribution of any installation that uses these lamps will be determined by the design of the installation.

### Product data

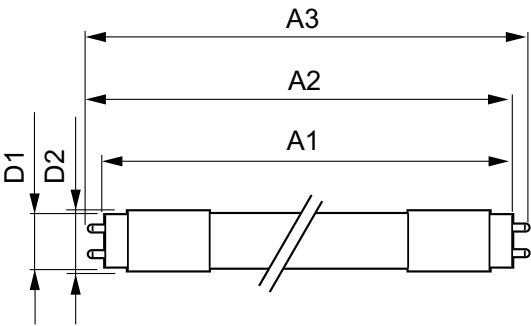
General Information		Color Consistency	
Cap-Base	G13 [Medium Bi-Pin Fluorescent]	Color rendering index (CRI)	<6
Nominal lifetime	60,000 hour(s)	LLMF At End Of Nominal Lifetime (Nom)	70 %
Switching Cycle	200,000	Operating and Electrical	
Lighting Technology	LED	Line Frequency	50 to 60 Hz
EU RoHS compliant	Yes	Input Frequency	50 to 60 Hz
Light Technical		Power Consumption	10 W
Color Code	840 [CCT of 4000K]	Lamp Current (Max)	101 mA
Beam Angle (Nom)	160 degree(s)	Lamp Current (Min)	38 mA
Luminous Flux	1,050 lm	Starting Time (Nom)	0.5 s
Color Designation	Cool White (CW)	Warm-up time to 60% light	0.5 s
Correlated Color Temperature (Nom)	4000 K	Power Factor (Fraction)	0.90
Luminous Efficacy (rated) (Nom)	105.00 lm/W		

MASTER LEDtube EM/Mains T8

Voltage (Nom)	100-277 V
Temperature	
Ambient temperature range	-20 °C to 45 °C
T-Case Maximum (Nom)	60 °C
Controls and Dimming	
Dimmable	No
Mechanical and Housing	
Bulb Finish	Frosted
Product Length	600 mm
Bulb Shape	T8
Approval and Application	
Energy Saving Product	Yes

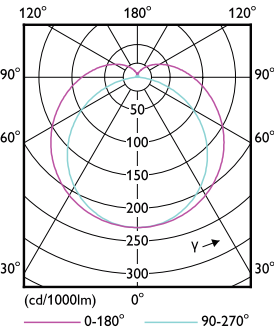
Approval Marks	RoHS compliance CE marking UL certificate KEMA Keur certificate
Energy Consumption kWh/1000 h	10 kWh
Product Data	
Order product name	MAS LEDtube 600mm HO VWV 10W 840 T8
Full product name	MAS LEDtube 600mm HO VWV 10W 840 T8
Full product code	871869681123800
Order code	929001877512
Material Nr. (12NC)	929001877512
Numerator - Quantity Per Pack	1
EAN/UPC - Product/Case	8718696811238
Numerator - Packs per outer box	10
EAN/UPC - Case	8718696811245

Dimensional drawing

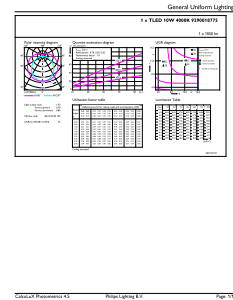


Product	D1	D2	A1	A2	A3
MAS LEDtube 600mm HO VWV 10W 840 T8	25.8 mm	28 mm	588.5 mm	595.5 mm	602.5 mm

Photometric data



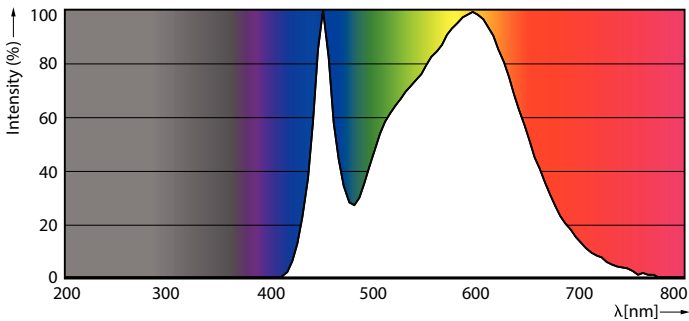
Light Distribution Diagram - MAS LEDtube 600mm HO VWV 10W 840 T8



General uniform lighting - MAS LEDtube 600mm HO VWV 10W 840 T8

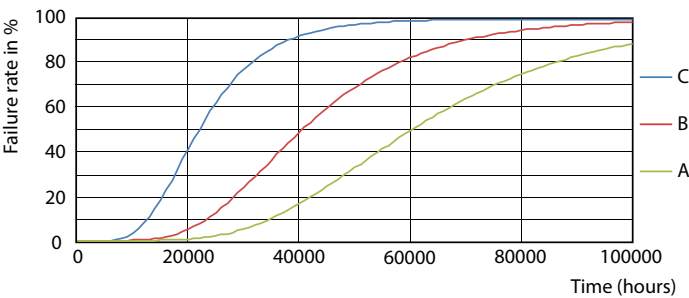
MASTER LEDtube EM/Mains T8

Photometric data

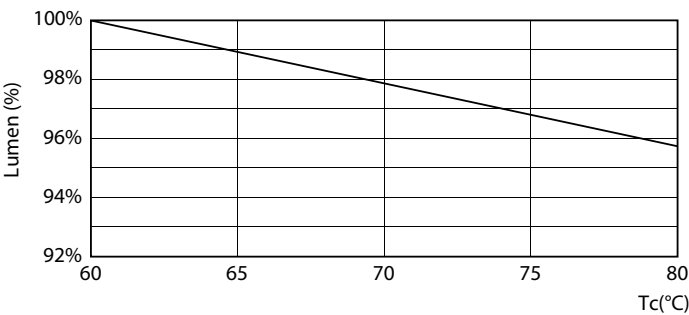


Spectral Power Distribution Colour - MAS LEDtube 600mm HO VWV 10W 840 T8

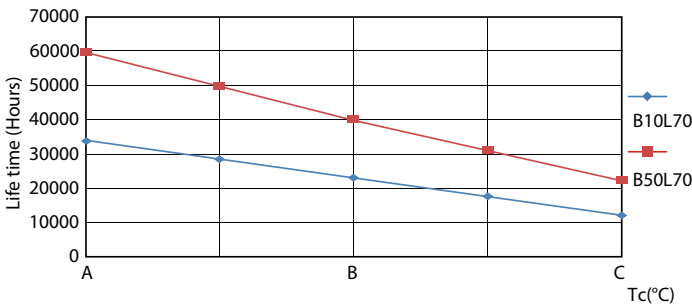
Lifetime



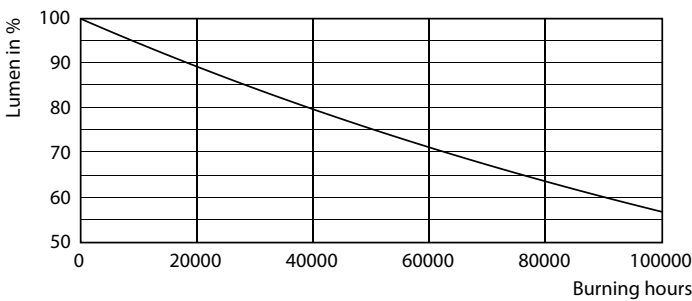
Life Expectancy Diagram - MAS LEDtube 600mm HO VWV 10W 840 T8



Lumen Maintenance Diagram - MAS LEDtube 600mm HO VWV 10W 840 T8



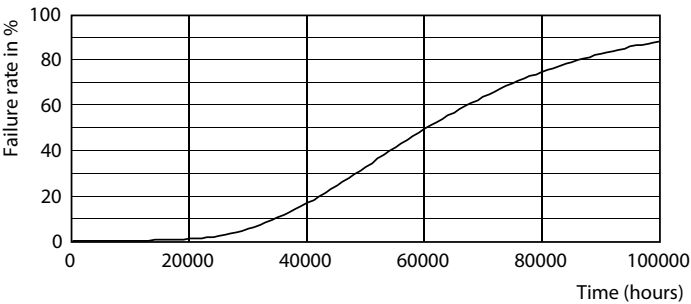
Life Expectancy Diagram - MAS LEDtube 600mm HO VWV 10W 840 T8



Lumen Maintenance Diagram - MAS LEDtube 600mm HO VWV 10W 840 T8

# MASTER LEDtube EM/Mains T8

## Lifetime



Life Expectancy Diagram - MAS LEDtube 600mm HO VWV 10W 840 T8

