



MASTER LEDtube EM/ Mains T8

MASTER LEDtube 600mm HO VWV 10W 865 T8

The Philips MASTER LEDtube integrates a LED light source into a traditional fluorescent form factor. Its unique design creates a perfectly uniform visual appearance which cannot be distinguished from traditional fluorescent. For those that are looking for value for money within limited budget and re-lamping efforts for better light effect and lifetime.

Warnings and Safety

• -

Product data

General Information	
Cap-Base	G13 [Medium Bi-Pin Fluorescent]
Nominal lifetime	60,000 hour(s)
Switching Cycle	200,000
Lighting Technology	LED
EU RoHS compliant	Yes

Light Technical	
Color Code	865 [CCT of 6500K]
Beam Angle (Nom)	160 degree(s)
Luminous Flux	1,050 lm
Color Designation	Cool Daylight
Correlated Color Temperature (Nom)	6500 K
Luminous Efficacy (rated) (Nom)	105.00 lm/W
Color Consistency	<6
Color rendering index (CRI)	80

LLMF At End Of Nominal Lifetime (Nom) 70 %	
--	--

Operating and Electrical	
Line Frequency	50 to 60 Hz
Input Frequency	50 to 60 Hz
Power Consumption	10 W
Lamp Current (Max)	101 mA
Lamp Current (Min)	38 mA
Starting Time (Nom)	0.5 s
Warm-up time to 60% light	0.5 s
Power Factor (Fraction)	0.90
Voltage (Nom)	100-277 V

Temperature	
Ambient temperature range	-20 °C to 45 °C
T-Case Maximum (Nom)	60 °C

MASTER LEDtube EM/Mains T8

Controls and Dimming

Dimmable	No
----------	----

Mechanical and Housing

Bulb Finish	Frosted
Product Length	600 mm
Bulb Shape	T8

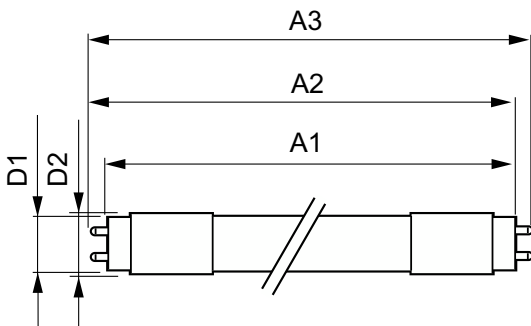
Approval and Application

Energy Saving Product	Yes
Approval Marks	RoHS compliance CE marking UL certificate KEMA Keur certificate
Energy Consumption kWh/1000 h	10 kWh

Product Data

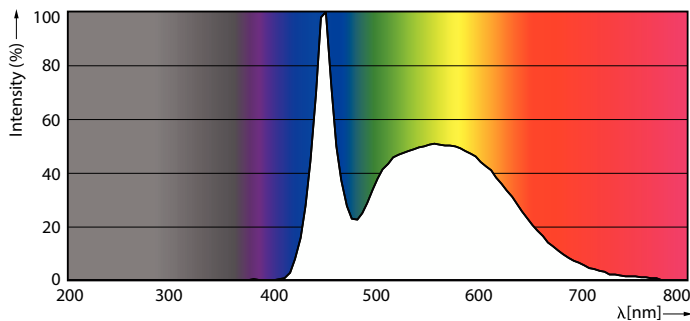
Order product name	MAS LEDtube 600mm HO VWV 10W 865 T8
Full product name	MASTER LEDtube 600mm HO VWV 10W 865 T8
Full product code	871869681127600
Order code	81127600
Material Nr. (12NC)	929001877612
Numerator - Quantity Per Pack	1
EAN/UPC - Product/Case	8718696811276
Numerator - Packs per outer box	10
EAN/UPC - Case	8718696811283

Dimensional drawing

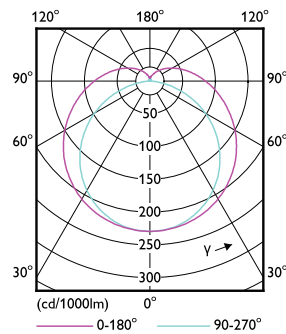


Product	D1	D2	A1	A2	A3
MAS LEDtube 600mm HO VWV 10W 865 T8	25.8 mm	28 mm	588.6 mm	595.6 mm	602.6 mm

Photometric data



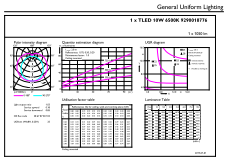
Spectral Power Distribution Colour - MAS LEDtube 600mm HO VWV 10W 865 T8



Light Distribution Diagram - MAS LEDtube 600mm HO VWV 10W 865 T8

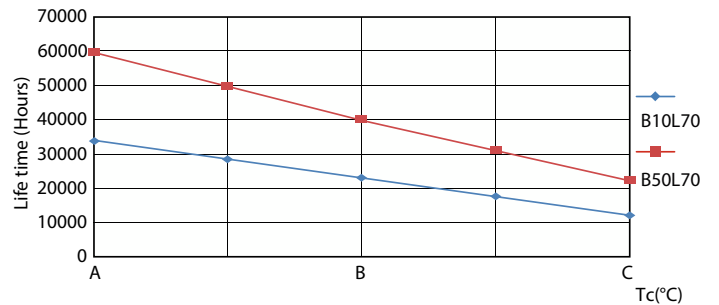
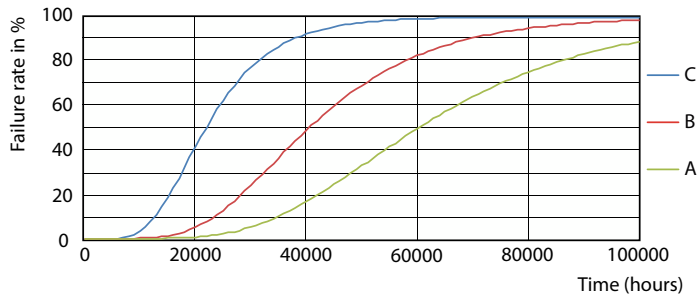
MASTER LEDtube EM/Mains T8

Photometric data



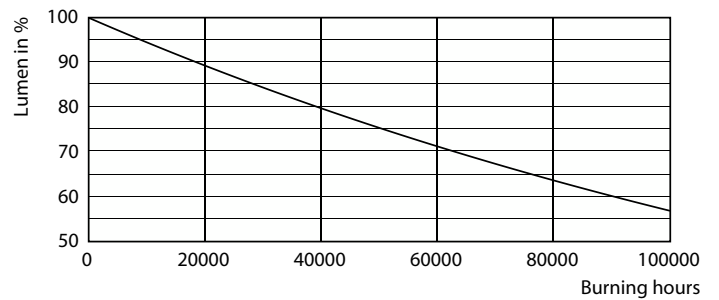
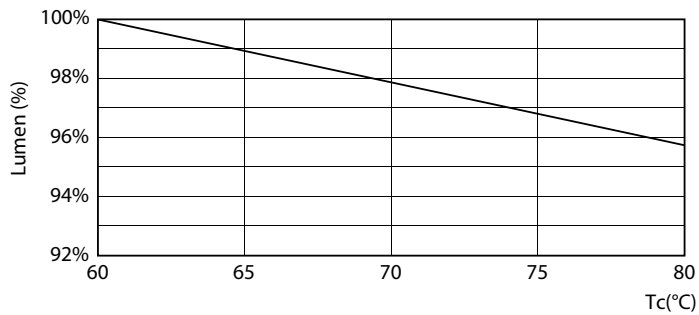
General uniform lighting - MAS LEDtube 600mm HO VVW 10W 865 T8

Lifetime



Life Expectancy Diagram - MAS LEDtube 600mm HO VVW 10W 865 T8

Life Expectancy Diagram - MAS LEDtube 600mm HO VVW 10W 865 T8

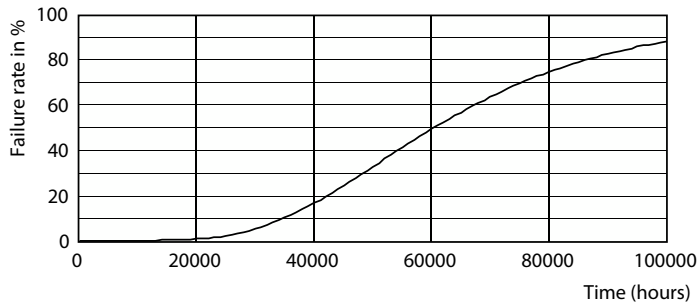


Lumen Maintenance Diagram - MAS LEDtube 600mm HO VVW 10W 865 T8

Lumen Maintenance Diagram - MAS LEDtube 600mm HO VVW 10W 865 T8

MASTER LEDtube EM/Mains T8

Lifetime



Life Expectancy Diagram - MAS LEDtube 600mm HO VWV 10W 865 T8

