



# MASTER LEDtube EM/ Mains T8

## MASTER LEDtube Sensor 1200mm HO 16.5W840 T8

The Philips MASTER LEDtube integrates a LED light source into a traditional fluorescent form factor. Its unique design creates a perfectly uniform visual appearance which cannot be distinguished from traditional fluorescent. For those that are looking for value for money within limited budget and re-lamping efforts for better light effect and lifetime.

### Warnings and Safety

• -

### Product data

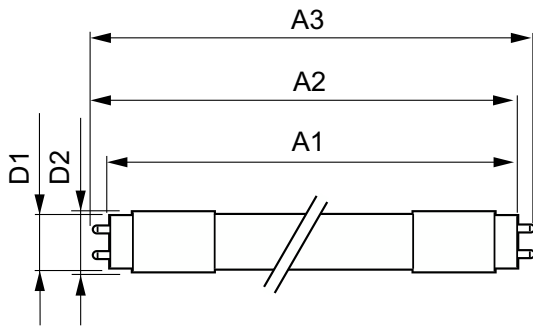
General Information		Color rendering index (CRI)	
Cap-Base	G13 [Medium Bi-Pin Fluorescent]		83
Nominal lifetime	50,000 hour(s)	LLMF At End Of Nominal Lifetime (Nom) 70 %	
Switching Cycle	200,000	Operating and Electrical	
Lighting Technology	LED	Line Frequency	50 to 60 Hz
EU RoHS compliant	Yes	Input Frequency	50 to 60 Hz
Light Technical		Power Consumption	16.5 W
Color Code	840 [CCT of 4000K]	Lamp Current (Max)	85 mA
Beam Angle (Nom)	240 degree(s)	Lamp Current (Min)	65 mA
Luminous Flux	2,100 lm	Starting Time (Nom)	0.5 s
Color Designation	Cool White (CW)	Warm-up time to 60% light	0.5 s
Correlated Color Temperature (Nom)	4000 K	Power Factor (Fraction)	0.9
Luminous Efficacy (rated) (Nom)	127.00 lm/W	Voltage (Nom)	220-240 V
Color Consistency	<6		

# MASTER LEDtube EM/Mains T8

Temperature	
Ambient temperature range	-20 °C to 45 °C
T-Case Maximum (Nom)	55 °C
Controls and Dimming	
Dimmable	Yes
Mechanical and Housing	
Bulb Material	Glass
Product Length	1,200 mm
Bulb Shape	Tube, double-ended
Approval and Application	
Energy Saving Product	Yes
Approval Marks	CE marking RoHS compliance KEMA Keur certificate

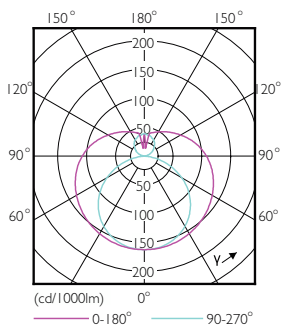
Energy Consumption kWh/1000 h	17 kWh
Product Data	
Order product name	MAS LEDtube Sensor 1200mm HO 16.5W840 T8
Full product name	MASTER LEDtube Sensor 1200mm HO 16.5W840 T8
Full product code	871869680602900
Order code	80602900
Material Nr. (12NC)	929001878502
Numerator - Quantity Per Pack	1
EAN/UPC - Product/Case	8718696806029
Numerator - Packs per outer box	10
EAN/UPC - Case	8718696806036

## Dimensional drawing

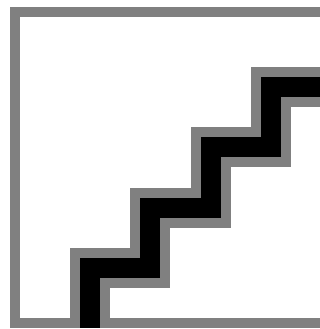


Product	D1	D2	A1	A2	A3
MAS LEDtube Sensor 1200mm HO 16.5W840 T8	25.8 mm	28 mm	1,199.4 mm	1,206.5 mm	1,213.6 mm

## Photometric data



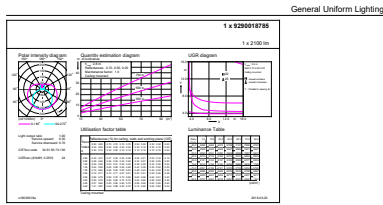
Light Distribution Diagram - MAS LEDtube Sensor 1200mm HO 16.5W840 T8



Spectral Power Distribution Colour - MAS LEDtube Sensor 1200mm HO 16.5W840 T8

# MASTER LEDtube EM/Mains T8

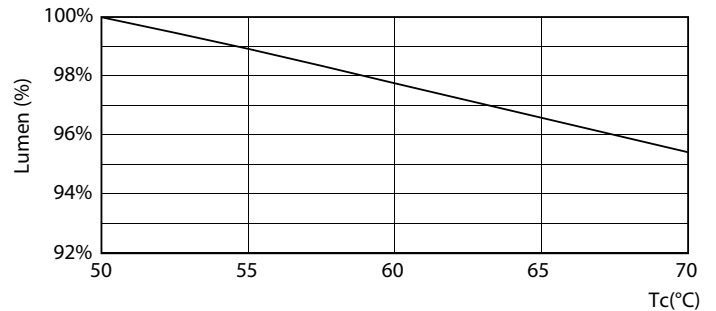
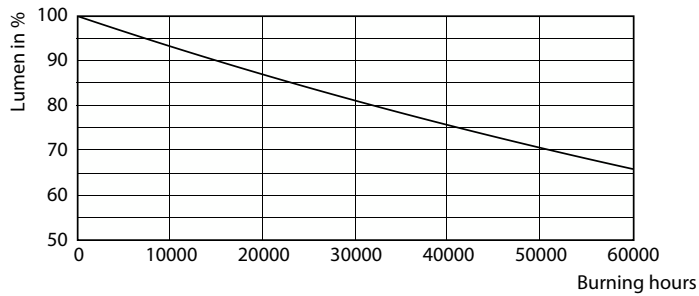
## Photometric data



Kalux Photometric 4.5 Philips Lighting B.V. Page 1/1

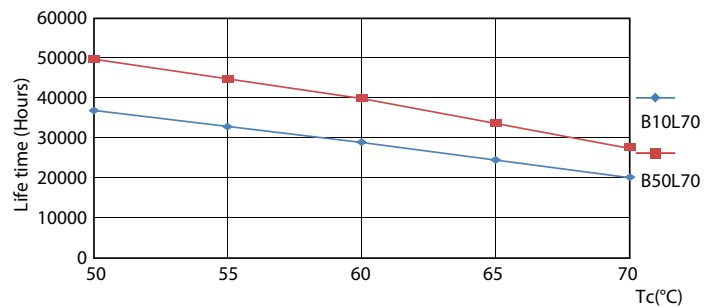
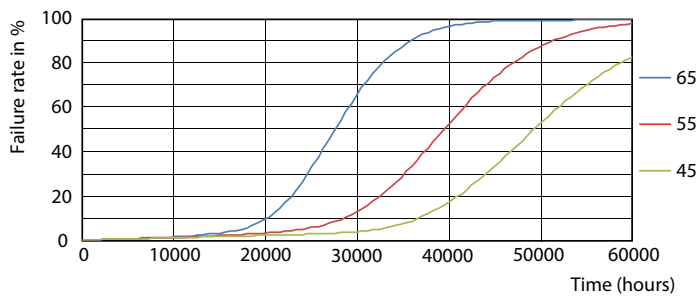
General uniform lighting - MAS LEDtube Sensor 1200mm HO 16.5W840 T8

## Lifetime



Lumen Maintenance Diagram - MAS LEDtube Sensor 1200mm HO 16.5W840 T8

Lumen Maintenance Diagram - MAS LEDtube Sensor 1200mm HO 16.5W840 T8

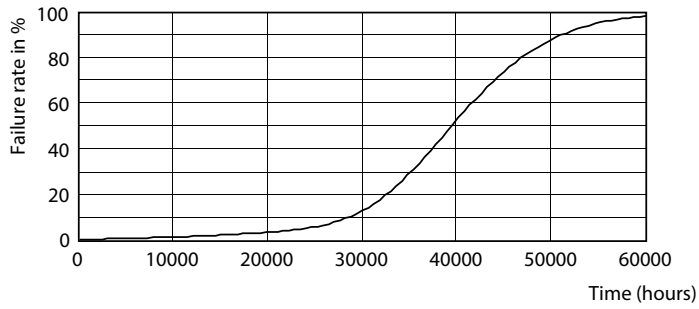


Life Expectancy Diagram - MAS LEDtube Sensor 1200mm HO 16.5W840 T8

Life Expectancy Diagram - MAS LEDtube Sensor 1200mm HO 16.5W840 T8

# MASTER LEDtube EM/Mains T8

## Lifetime



Life Expectancy Diagram - MAS LEDtube Sensor 1200mm HO 16.5W840 T8

