



# MASTER LEDtube EM/ Mains T8

## MAS LEDtube Sensor 1200mm HO 16.5W840 T8

The Philips MASTER LEDtube integrates a LED light source into a traditional fluorescent form factor. Its unique design creates a perfectly uniform visual appearance, which cannot be distinguished from traditional fluorescent. These T8 LED tubes are the right choice for absolute performance and are designed to stand up to everyday conditions. Unparalleled savings thanks to low energy consumption and an exceptionally long lifetime ensure this tube masters every demanding application.

### Warnings and Safety

- NOTE: The overall energy efficiency and light distribution of any installation that uses these lamps will be determined by the design of the installation.

### Product data

General Information	
Cap-Base	G13 [Medium Bi-Pin Fluorescent]
Nominal lifetime	50,000 hour(s)
Switching Cycle	200,000
Lighting Technology	LED
EU RoHS compliant	Yes

Light Technical	
Color Code	840 [CCT of 4000K]
Beam Angle (Nom)	240 degree(s)
Luminous Flux	2,100 lm
Color Designation	Cool White (CW)
Correlated Color Temperature (Nom)	4000 K
Luminous Efficacy (rated) (Nom)	127.00 lm/W

Color Consistency	<6
Color rendering index (CRI)	83
LLMF At End Of Nominal Lifetime (Nom)	70 %

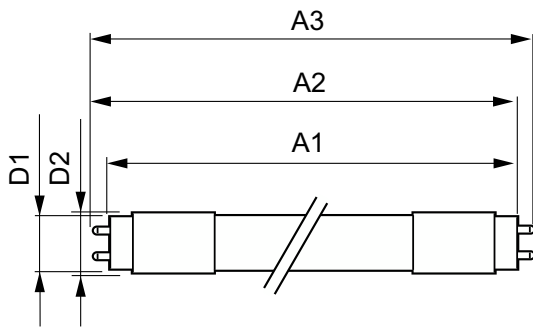
Operating and Electrical	
Line Frequency	50 to 60 Hz
Input Frequency	50 to 60 Hz
Power Consumption	16.5 W
Lamp Current (Max)	85 mA
Lamp Current (Min)	65 mA
Starting Time (Nom)	0.5 s
Warm-up time to 60% light	0.5 s
Power Factor (Fraction)	0.9

# MASTER LEDtube EM/Mains T8

Voltage (Nom)	220-240 V
<b>Temperature</b>	
Ambient temperature range	-20 °C to 45 °C
T-Case Maximum (Nom)	55 °C
<b>Controls and Dimming</b>	
Dimmable	Yes
<b>Mechanical and Housing</b>	
Bulb Material	Glass
Product Length	1,200 mm
Bulb Shape	Tube, double-ended
<b>Approval and Application</b>	
Energy Saving Product	Yes
Approval Marks	CE marking RoHS compliance KEMA Keur certificate

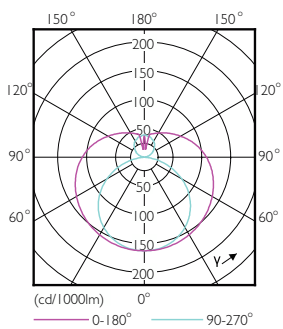
Energy Consumption kWh/1000 h	17 kWh
<b>Product Data</b>	
Order product name	MAS LEDtube Sensor 1200mm HO 16.5W840 T8
Full product name	MAS LEDtube Sensor 1200mm HO 16.5W840 T8
Full product code	871869680602900
Order code	929001878502
Material Nr. (12NC)	929001878502
Numerator - Quantity Per Pack	1
EAN/UPC - Product/Case	8718696806029
Numerator - Packs per outer box	10
EAN/UPC - Case	8718696806036

## Dimensional drawing

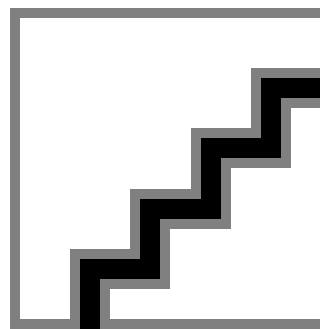


Product	D1	D2	A1	A2	A3
MAS LEDtube Sensor 1200mm HO 16.5W840 T8	25.8 mm	28 mm	1,199.4 mm	1,206.5 mm	1,213.6 mm

## Photometric data



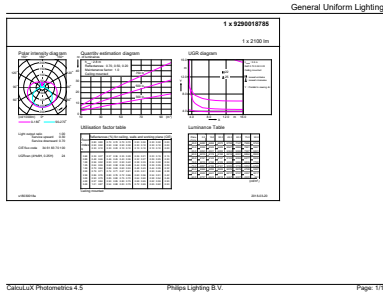
Light Distribution Diagram - MAS LEDtube Sensor 1200mm HO 16.5W840 T8



Spectral Power Distribution Colour - MAS LEDtube Sensor 1200mm HO 16.5W840 T8

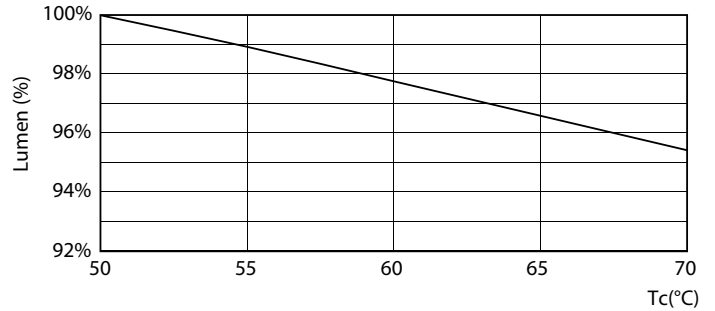
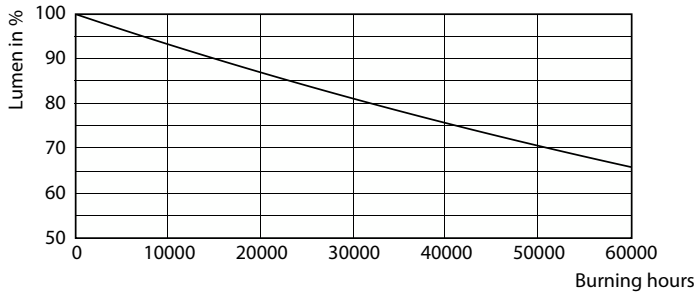
# MASTER LEDtube EM/Mains T8

## Photometric data



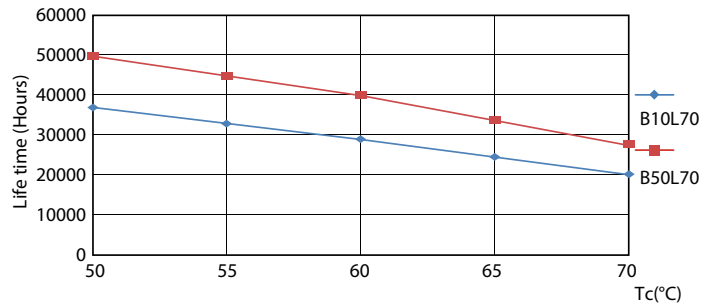
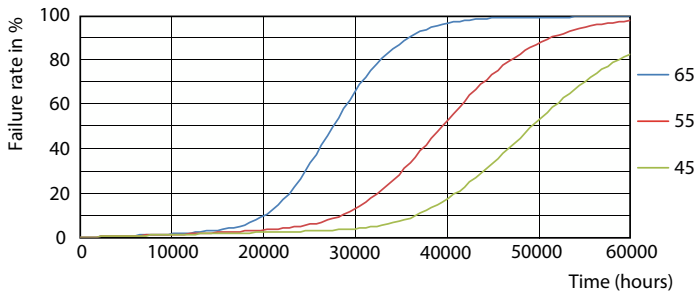
General uniform lighting - MAS LEDtube Sensor 1200mm HO 16.5W840 T8

## Lifetime



Lumen Maintenance Diagram - MAS LEDtube Sensor 1200mm HO 16.5W840 T8

Lumen Maintenance Diagram - MAS LEDtube Sensor 1200mm HO 16.5W840 T8

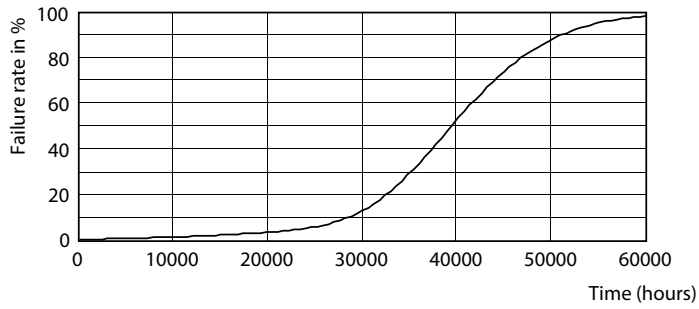


Life Expectancy Diagram - MAS LEDtube Sensor 1200mm HO 16.5W840 T8

Life Expectancy Diagram - MAS LEDtube Sensor 1200mm HO 16.5W840 T8

# MASTER LEDtube EM/Mains T8

## Lifetime



Life Expectancy Diagram - MAS LEDtube Sensor 1200mm HO 16.5W840 T8

