

MASTER LEDtube EM/ Mains

MASTER LEDtube Sensor 1200mm HO 16.5W865 T8

The Philips MASTER LEDtube integrates a LED light source into a traditional fluorescent form factor. Its unique design creates a perfectly uniform visual appearance which cannot be distinguished from traditional fluorescent. This product is the ideal solution for up lighting in general lighting applications.

Product data

General Information	
Cap base	G13 [Medium Bi-Pin Fluorescent]
Nominal lifetime (nom.)	50000 h
Switching cycle	200000X

Light Technical	
Colour code	865 [CCT of 6,500 K]
Beam Angle (Nom)	240 °
Luminous flux (nom.)	2100 lm
Correlated colour temperature (nom.)	6500 K
Colour consistency	<6
Color rendering index (nom.)	83
LLMF at end of nominal lifetime (nom.)	70 %

Operating and Electrical	
Input frequency	50 to 60 Hz
Power (Rated) (Nom)	16.5 W
Lamp current (max.)	85 mA
Lamp current (min.)	65 mA

Starting time (nom.)	0.5 s
Warm-up time to 60% light (nom.)	0.5 s
Power factor (nom.)	0.9
Voltage (Nom)	220-240 V

Temperature	
T ambient (max.)	45 °C
T ambient (min.)	-20 °C
T storage (max.)	65 °C
T storage (min.)	-40 °C
T-Case maximum (nom.)	55 °C

Controls and Dimming	
Dimmable	Yes

Mechanical and Housing	
Bulb material	Glass
Product length	1200 mm

MASTER LEDtube EM/Mains

Approval and Application

Energy efficiency label (EEL)	A++
Energy-saving product	Yes
Approval marks	CE marking RoHS compliance KEMA Keur certificate
Energy Consumption kWh/1000 h	17 kWh

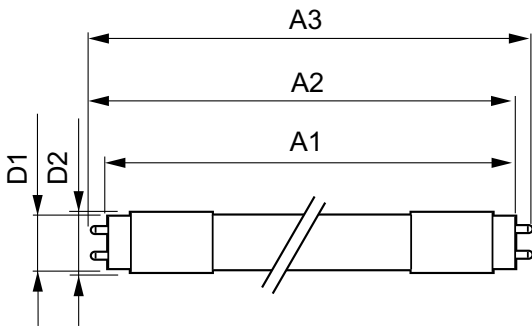
Product Data

Full product code	871869680604300
Order product name	MASTER LEDtube Sensor 1200mm HO 16.5W865 T8

EAN/UPC – product	8718696806043
Order code	80604300
Numerator – quantity per pack	1
Numerator – packs per outer box	10
Material no. (12NC)	929001878602
Net weight (piece)	0.215 kg

Warnings and Safety

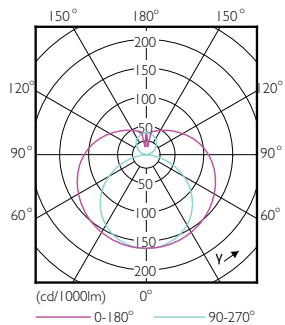
Dimensional drawing



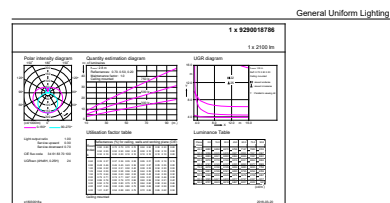
TLED 1200mm 16.5-36W 2100lm 6500K G13 D

Product	D1	D2	A1	A2	A3
MASTER LEDtube Sensor 1200mm HO 16.5W865 T8	25.8 mm	28 mm	1199.4 mm	1206.5 mm	1213.6 mm

Photometric data



16-5W G13 840 4000K

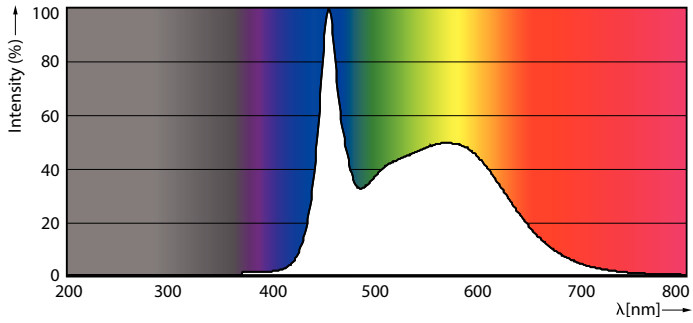


CalculX Photometrics 4.5 Philips Lighting B.V. Page: 1/1

16-5W G13 865 6500K

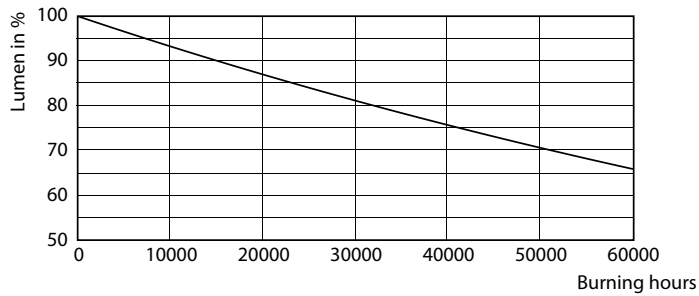
MASTER LEDtube EM/Mains

Photometric data

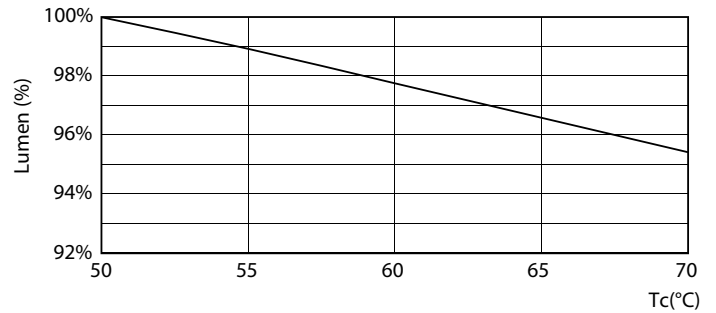


16-5W G13

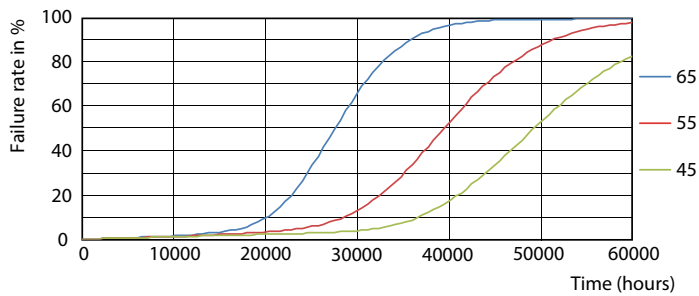
Lifetime



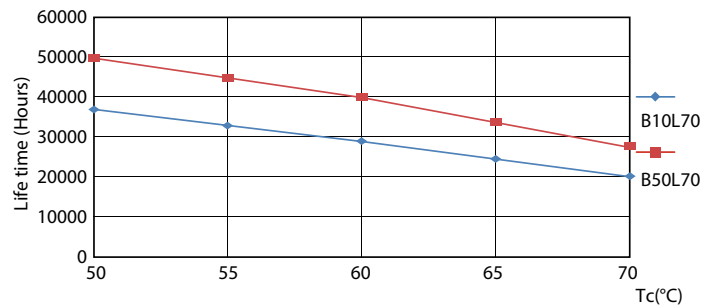
16-5W G13



16-5W G13



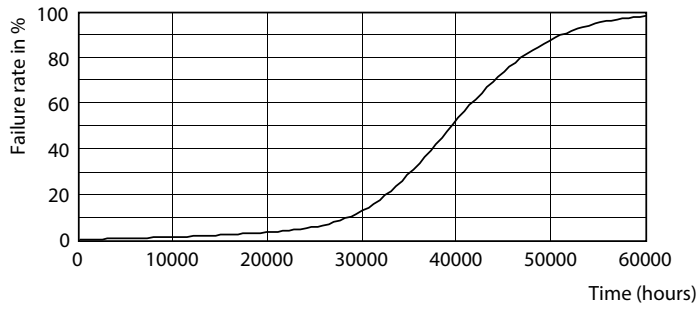
16-5W G13



16-5W G13

MASTER LEDtube EM/Mains

Lifetime



16-5W G13

