



MASTER LEDtube EM/ Mains T8

MAS LEDtube Sensor 1200mm HO 16.5W865 T8

The Philips MASTER LEDtube integrates a LED light source into a traditional fluorescent form factor. Its unique design creates a perfectly uniform visual appearance, which cannot be distinguished from traditional fluorescent. These T8 LED tubes are the right choice for absolute performance and are designed to stand up to everyday conditions. Unparalleled savings thanks to low energy consumption and an exceptionally long lifetime ensure this tube masters every demanding application.

Warnings and Safety

- NOTE: The overall energy efficiency and light distribution of any installation that uses these lamps will be determined by the design of the installation.

Product data

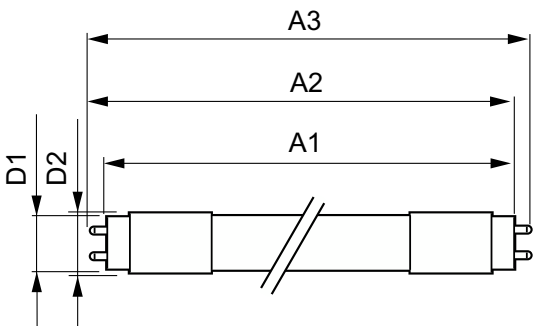
General Information		Color Consistency	
Cap-Base	G13 [Medium Bi-Pin Fluorescent]	Color rendering index (CRI)	<6
Nominal lifetime	50,000 hour(s)	LLMF At End Of Nominal Lifetime (Nom)	70 %
Switching Cycle	200,000	Operating and Electrical	
Lighting Technology	LED	Line Frequency	50 to 60 Hz
EU RoHS compliant	Yes	Input Frequency	50 to 60 Hz
Light Technical		Power Consumption	16.5 W
Color Code	865 [CCT of 6500K]	Lamp Current (Max)	85 mA
Beam Angle (Nom)	240 degree(s)	Lamp Current (Min)	65 mA
Luminous Flux	2,100 lm	Starting Time (Nom)	0.5 s
Color Designation	Cool Daylight	Warm-up time to 60% light	0.5 s
Correlated Color Temperature (Nom)	6500 K	Power Factor (Fraction)	0.9
Luminous Efficacy (rated) (Nom)	127.00 lm/W		

MASTER LEDtube EM/Mains T8

Voltage (Nom)	220-240 V
Temperature	
Ambient temperature range	-20 °C to 45 °C
T-Case Maximum (Nom)	55 °C
Controls and Dimming	
Dimmable	Yes
Mechanical and Housing	
Bulb Material	Glass
Product Length	1,200 mm
Bulb Shape	Tube, double-ended
Approval and Application	
Energy Saving Product	Yes
Approval Marks	CE marking RoHS compliance KEMA Keur certificate

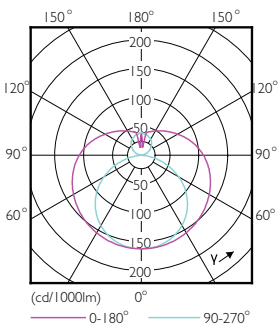
Energy Consumption kWh/1000 h	17 kWh
Product Data	
Order product name	MAS LEDtube Sensor 1200mm HO 16.5W865 T8
Full product name	MAS LEDtube Sensor 1200mm HO 16.5W865 T8
Full product code	871869680604300
Order code	929001878602
Material Nr. (12NC)	929001878602
Numerator - Quantity Per Pack	1
EAN/UPC - Product/Case	8718696806043
Numerator - Packs per outer box	10
EAN/UPC - Case	8718696806050

Dimensional drawing

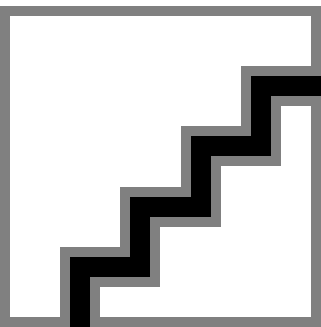


Product	D1	D2	A1	A2	A3
MAS LEDtube Sensor 1200mm HO 16.5W865 T8	25.8 mm	28 mm	1,199.4 mm	1,206.5 mm	1,213.6 mm

Photometric data



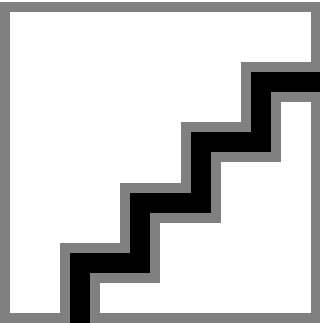
Light Distribution Diagram - MAS LEDtube Sensor 1200mm HO 16.5W865 T8



General uniform lighting - MAS LEDtube Sensor 1200mm HO 16.5W865 T8

MASTER LEDtube EM/Mains T8

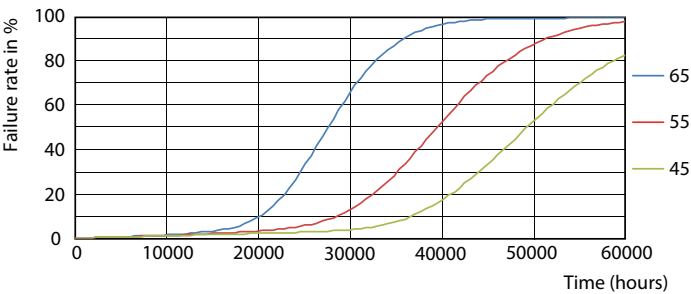
Photometric data



Spectral Power Distribution Colour - MAS LEDtube Sensor 1200mm HO 16.5W865 T8

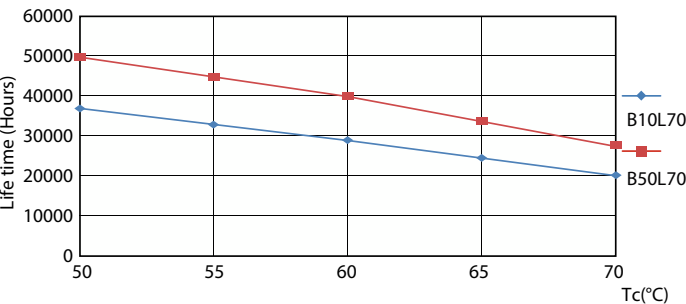
Lifetime

Lumen Maintenance Diagram - MAS LEDtube Sensor 1200mm HO 16.5W865 T8



Life Expectancy Diagram - MAS LEDtube Sensor 1200mm HO 16.5W865 T8

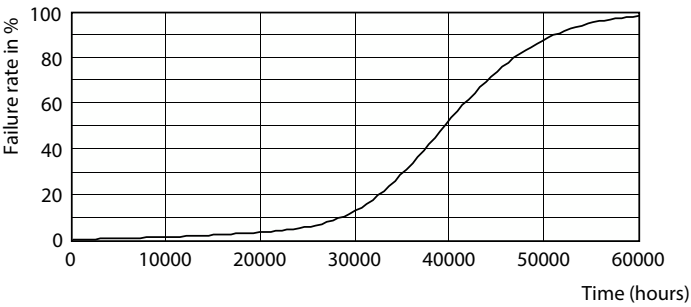
Lumen Maintenance Diagram - MAS LEDtube Sensor 1200mm HO 16.5W865 T8



Life Expectancy Diagram - MAS LEDtube Sensor 1200mm HO 16.5W865 T8

MASTER LEDtube EM/Mains T8

Lifetime



Life Expectancy Diagram - MAS LEDtube Sensor 1200mm HO 16.5W865 T8

