

MASTER LEDtube EM/ Mains

MASTER LEDtube Sensor 1500mm HO 24W840 T8

The Philips MASTER LEDtube integrates a LED light source into a traditional fluorescent form factor. Its unique design creates a perfectly uniform visual appearance which cannot be distinguished from traditional fluorescent. This product is the ideal solution for up lighting in general lighting applications.

Product data

General Information	
Cap base	G13 [Medium Bi-Pin Fluorescent]
Nominal lifetime (nom.)	50000 h
Switching cycle	200000X

Light Technical	
Colour Code	840 [CCT of 4,000 K]
Technical Beam Angle (Nom)	240 °
Lamp Luminous Flux 25°C EL (Nom)	3100 lm
Colour Temperature, horizontal (Nom)	4000 K
Colour consistency	<6
Colour Rendering Index,horiz (Nom)	83
LLMF at end of nominal lifetime (nom.)	70 %

Operating and Electrical	
Input frequency	50 to 60 Hz
Power (Rated) (Nom)	24 W
Lamp current (max.)	118 mA
Lamp current (min.)	98 mA
Starting time (nom.)	0.5 s

Warm-up time to 60% light (nom.)	0.5 s
Power factor (nom.)	0.9
Voltage (Nom)	220-240 V

Temperature	
T ambient (max.)	45 °C
T ambient (min.)	-20 °C
T storage (max.)	65 °C
T storage (min.)	-40 °C
T-Case maximum (nom.)	60 °C

Controls and Dimming	
Dimmable	Yes

Mechanical and Housing	
Bulb material	Glass
Product length	1500 mm

Approval and Application	
Energy efficiency label (EEL)	A++

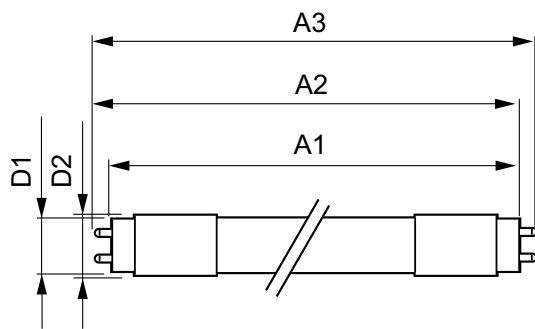
MASTER LEDtube EM/Mains

Energy-saving product	Yes
Approval marks	CE marking RoHS compliance KEMA Keur certificate
Energy Consumption kWh/1000 h	24 kWh
Product Data	
Full product code	871869680606700
Order product name	MASTER LEDtube Sensor 1500mm HO 24W840 T8

EAN/UPC – product	8718696806067
Order code	80606700
Numerator – quantity per pack	1
Numerator – packs per outer box	10
Material no. (12NC)	929001878702
Net weight (piece)	0.270 kg

Warnings and Safety

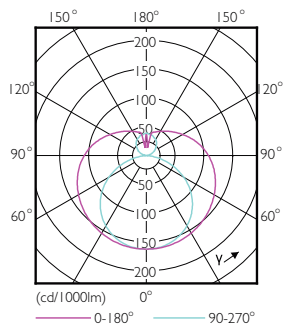
Dimensional drawing



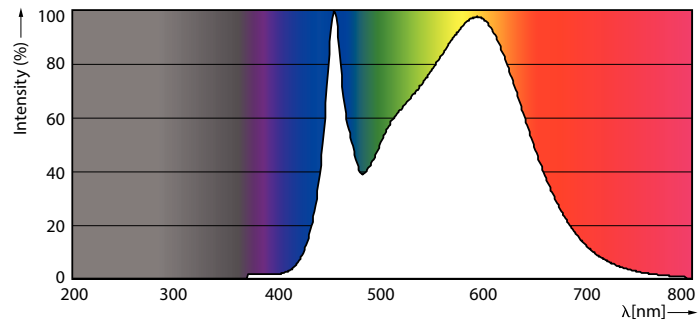
TLED 1500mm 24-58W 3100lm 4000K G13 D

Product	D1	D2	A1	A2	A3
MASTER LEDtube Sensor 1500mm HO 24W840 T8	25.8 mm	28 mm	1500 mm	1507.1 mm	1514.2 mm

Photometric data



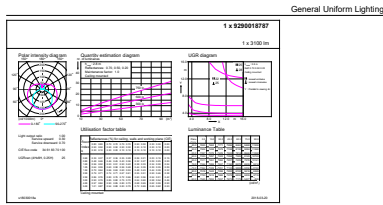
16-5W G13 840 4000K



16-5W G13

MASTER LEDtube EM/Mains

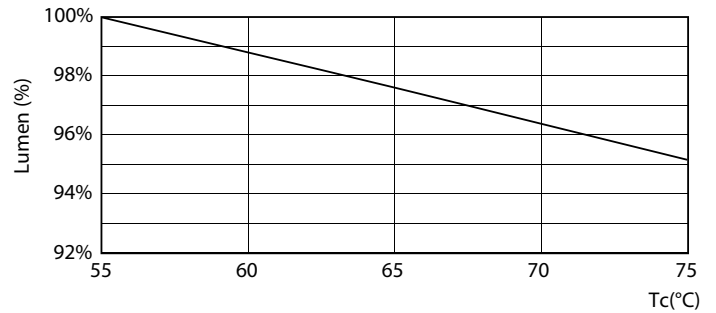
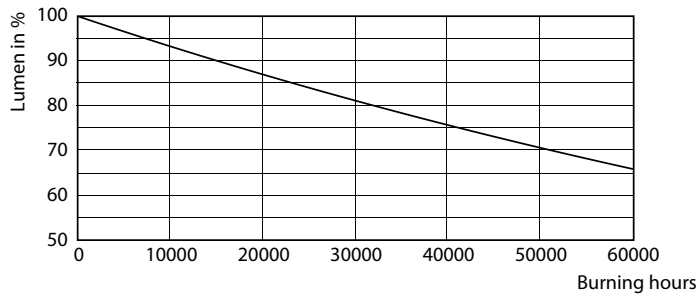
Photometric data



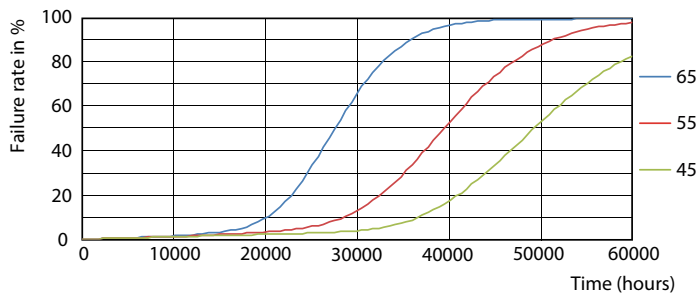
KaluxUX Photometric 4.5 Philips Lighting B.V. Page 1/1

24W G13 840 4000K

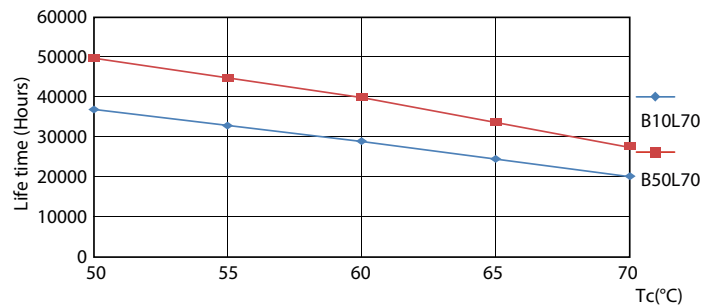
Lifetime



16-5W G13



24W G13

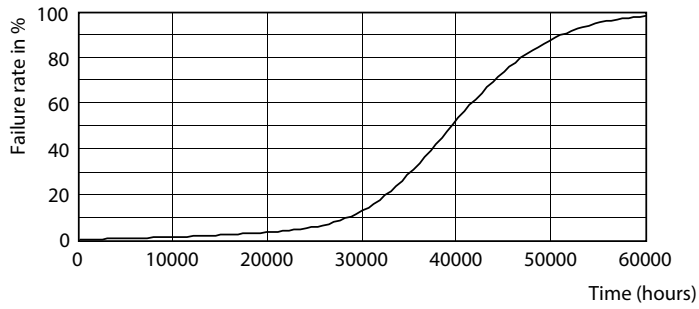


16-5W G13

16-5W G13

MASTER LEDtube EM/Mains

Lifetime



16-5W G13

