



# CorePro LED PLC 2P

## LED PLC 7.5W 830 2P G24d

CorePro LED PLC 2P integrates a LED light source into a traditional fluorescent form factor. This product is the ideal solution for uplampping in general lighting applications: it meets basic lighting requirements, offers significant energy savings, and is environmentally friendly.

### Product data

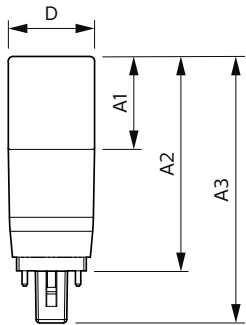
General Information		Lamp Current (Min)	
Cap-Base	G24d		57 mA
Nominal lifetime	15,000 hour(s)	Lamp Current (Nom)	57 mA
Switching Cycle	50,000	Starting Time (Nom)	0.5 s
Lighting Technology	LED	Warm-up time to 60% light	0.5 s
EU RoHS compliant	Yes	Power Factor (Fraction)	0.5
		Voltage (Nom)	220-240 V
Light Technical		Temperature	
Color Code	830 [CCT of 3000K]	Ambient temperature range	-20 °C to 45 °C
Beam Angle (Nom)	240 degree(s)	T-Case Maximum (Nom)	64 °C
Luminous Flux	750 lm		
Color Designation	White (WH)	Controls and Dimming	
Correlated Color Temperature (Nom)	3000 K	Dimmable	No
Luminous Efficacy (rated) (Nom)	100.00 lm/W		
Color Consistency	<6	Mechanical and Housing	
Color rendering index (CRI)	80	Product Length	100 mm
LLMF At End Of Nominal Lifetime (Nom)	70 %	Bulb Shape	PL-C
Operating and Electrical		Approval and Application	
Line Frequency	50 to 60 Hz	Energy Saving Product	Yes
Input Frequency	50 to 60 Hz	Approval Marks	RoHS compliance CE marking KEMA Keur certificate
Power Consumption	7.5 W		
Lamp Current (Max)	57 mA		

# CorePro LED PLC 2P

Energy Consumption kWh/1000 h	- kWh
<b>Product Data</b>	
Order product name	LED PLC 7.5W 830 2P G24d
Full product name	LED PLC 7.5W 830 2P G24d
Full product code	871869681016300
Order code	81016300

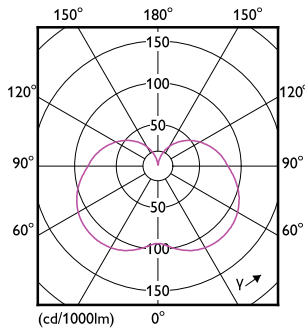
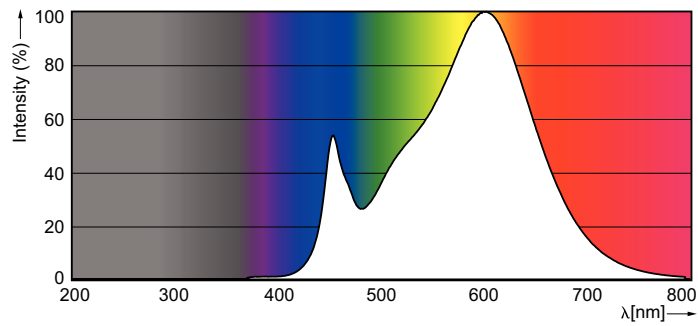
Material Nr. (12NC)	929001878908
Numerator - Quantity Per Pack	1
EAN/UPC - Product/Case	8718696810163
Numerator - Packs per outer box	10
EAN/UPC - Case	8718696810170

## Dimensional drawing



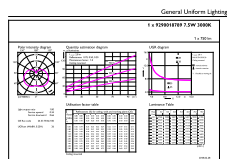
Product	D	A1	A2	A3
LED PLC 7.5W 830 2P G24d	37.2 mm	40 mm	92.5 mm	115 mm

## Photometric data



Spectral Power Distribution Colour - LED PLC 7.5W 830 2P G24d

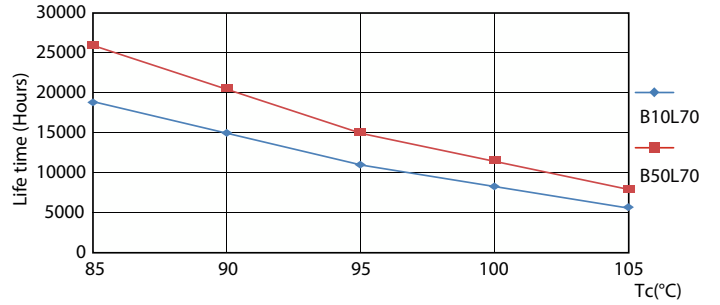
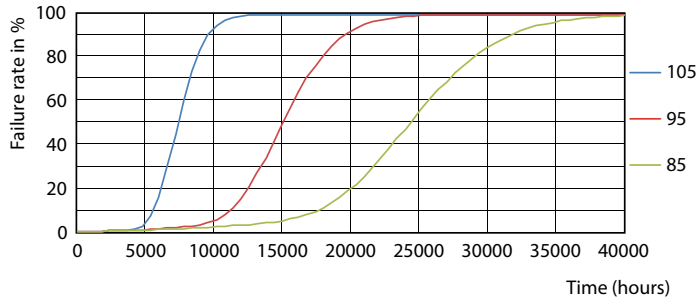
Light Distribution Diagram - LED PLC 7.5W 830 2P G24d



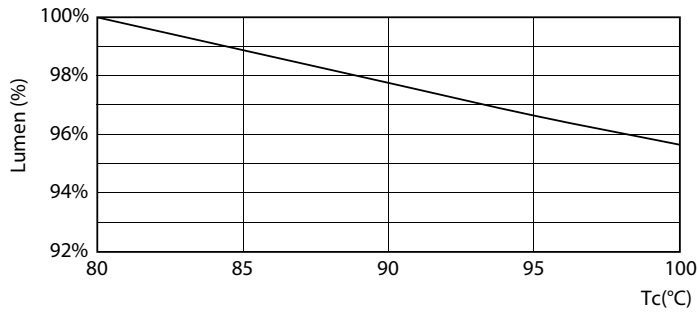
General uniform lighting - LED PLC 7.5W 830 2P G24d

# CorePro LED PLC 2P

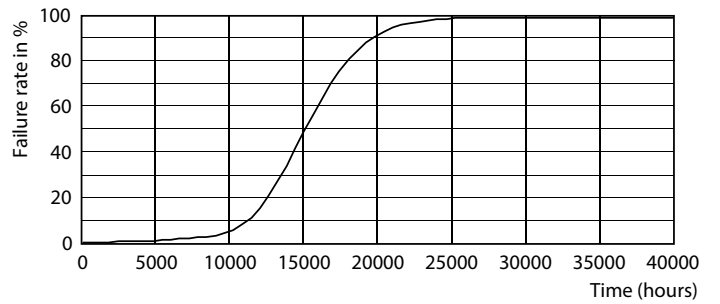
## Lifetime



Life Expectancy Diagram - LED PLC 7.5W 830 2P G24d

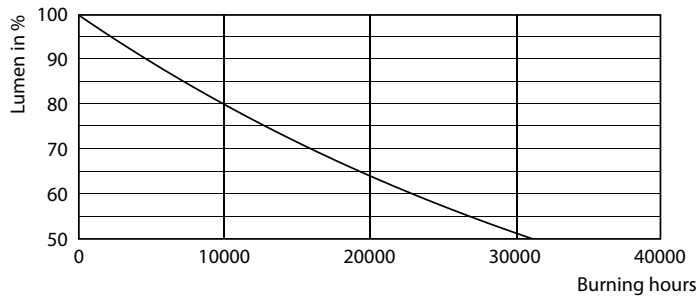


Life Expectancy Diagram - LED PLC 7.5W 830 2P G24d



Lumen Maintenance Diagram - LED PLC 7.5W 830 2P G24d

Life Expectancy Diagram - LED PLC 7.5W 830 2P G24d



Lumen Maintenance Diagram - LED PLC 7.5W 830 2P G24d

## CorePro LED PLC 2P

