



CorePro LED PLC 2P

LED PLC 7.5W 830 2P G24d

CorePro LED PLC 2P integrates a LED light source into a traditional fluorescent form factor. This product is the ideal solution for uplampping in general lighting applications: it meets basic lighting requirements, offers significant energy savings, and is environmentally friendly.

Product data

| | |
|---------------------|----------------|
| General Information | |
| Cap-Base | G24d |
| Nominal lifetime | 15,000 hour(s) |
| Switching Cycle | 50,000 |
| Lighting Technology | LED |
| EU RoHS compliant | Yes |

| | |
|---------------------------------------|--------------------|
| Light Technical | |
| Color Code | 830 [CCT of 3000K] |
| Beam Angle (Nom) | 240 degree(s) |
| Luminous Flux | 750 lm |
| Color Designation | White (WH) |
| Correlated Color Temperature (Nom) | 3000 K |
| Luminous Efficacy (rated) (Nom) | 100.00 lm/W |
| Color Consistency | <6 |
| Color rendering index (CRI) | 80 |
| LLMF At End Of Nominal Lifetime (Nom) | 70 % |

| | |
|--------------------------|-------------|
| Operating and Electrical | |
| Line Frequency | 50 to 60 Hz |
| Input Frequency | 50 to 60 Hz |
| Power Consumption | 7.5 W |
| Lamp Current (Max) | 57 mA |

| | |
|---------------------------|-----------|
| Lamp Current (Min) | 57 mA |
| Lamp Current (Nom) | 57 mA |
| Starting Time (Nom) | 0.5 s |
| Warm-up time to 60% light | 0.5 s |
| Power Factor (Fraction) | 0.5 |
| Voltage (Nom) | 220-240 V |

| | |
|---------------------------|-----------------|
| Temperature | |
| Ambient temperature range | -20 °C to 45 °C |
| T-Case Maximum (Nom) | 64 °C |

| | |
|----------------------|----|
| Controls and Dimming | |
| Dimmable | No |

| | |
|------------------------|--------|
| Mechanical and Housing | |
| Product Length | 100 mm |
| Bulb Shape | PL-C |

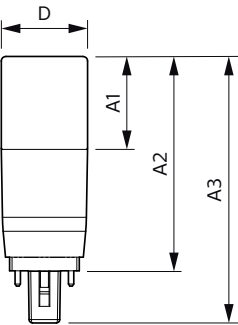
| | |
|--------------------------|--|
| Approval and Application | |
| Energy Saving Product | Yes |
| Approval Marks | RoHS compliance CE marking KEMA Keur certificate |

CorePro LED PLC 2P

| | |
|-------------------------------|--------------------------|
| Energy Consumption kWh/1000 h | - kWh |
| Product Data | |
| Order product name | LED PLC 7.5W 830 2P G24d |
| Full product name | LED PLC 7.5W 830 2P G24d |
| Full product code | 871869681016300 |
| Order code | 929001878908 |

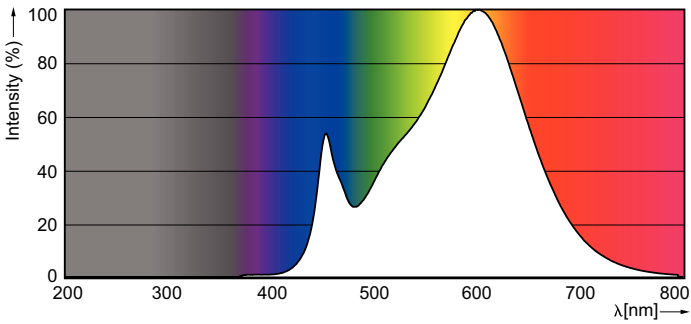
| | |
|---------------------------------|---------------|
| Material Nr. (12NC) | 929001878908 |
| Numerator - Quantity Per Pack | 1 |
| EAN/UPC - Product/Case | 8718696810163 |
| Numerator - Packs per outer box | 10 |
| EAN/UPC - Case | 8718696810170 |

Dimensional drawing

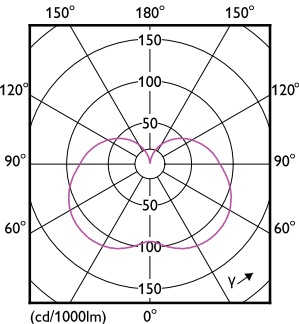


| Product | D | A1 | A2 | A3 |
|--------------------------|---------|-------|---------|--------|
| LED PLC 7.5W 830 2P G24d | 37.2 mm | 40 mm | 92.5 mm | 115 mm |

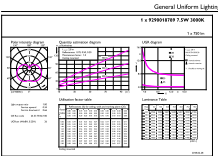
Photometric data



Spectral Power Distribution Colour - LED PLC 7.5W 830 2P G24d



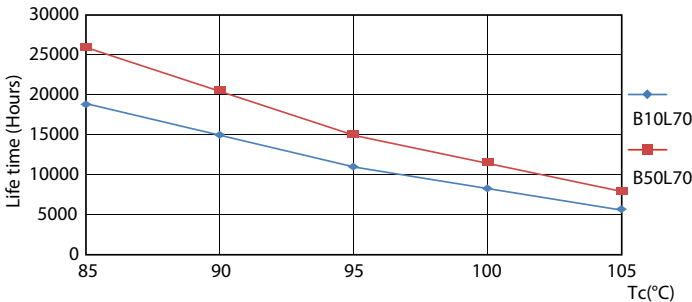
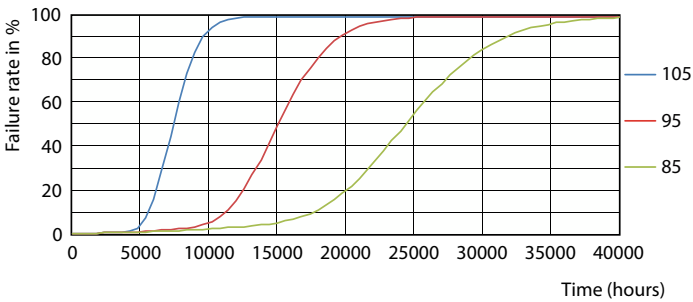
Light Distribution Diagram - LED PLC 7.5W 830 2P G24d



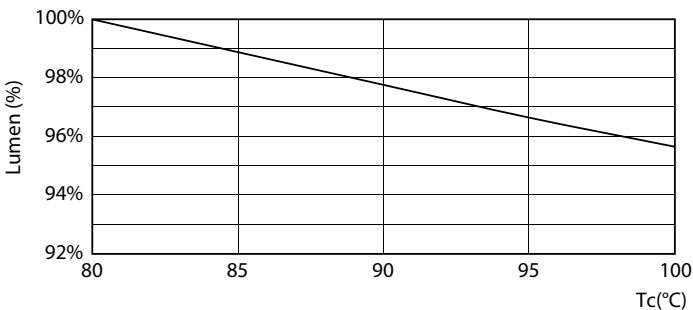
General uniform lighting - LED PLC 7.5W 830 2P G24d

CorePro LED PLC 2P

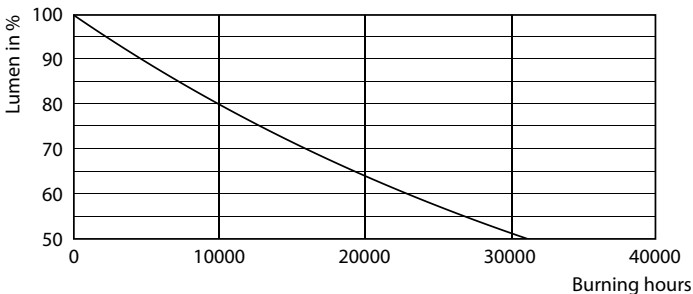
Lifetime



Life Expectancy Diagram - LED PLC 7.5W 830 2P G24d

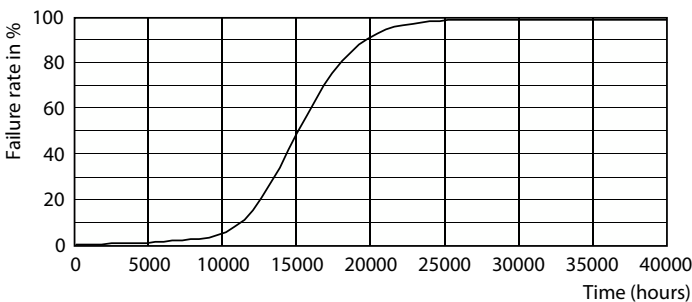


Lumen Maintenance Diagram - LED PLC 7.5W 830 2P G24d



Lumen Maintenance Diagram - LED PLC 7.5W 830 2P G24d

Life Expectancy Diagram - LED PLC 7.5W 830 2P G24d



Life Expectancy Diagram - LED PLC 7.5W 830 2P G24d

CorePro LED PLC 2P

