



# CorePro LED PLC 2P

## LED PLC 7.5W 865 2P G24d

CorePro LED PLC 2P integrates a LED light source into a traditional fluorescent form factor. This product is the ideal solution for uplampping in general lighting applications: it meets basic lighting requirements, offers significant energy savings, and is environmentally friendly.

### Product data

General Information	
Cap-Base	G24d
Nominal lifetime	15,000 hour(s)
Switching Cycle	50,000
Lighting Technology	LED
EU RoHS compliant	Yes
Light Technical	
Color Code	865 [CCT of 6500K]
Beam Angle (Nom)	240 degree(s)
Luminous Flux	806 lm
Color Designation	Cool Daylight
Correlated Color Temperature (Nom)	6500 K
Luminous Efficacy (rated) (Nom)	107.00 lm/W
Color Consistency	<6
Color rendering index (CRI)	80
LLMF At End Of Nominal Lifetime (Nom)	70 %
Operating and Electrical	
Line Frequency	50 to 60 Hz
Input Frequency	50 to 60 Hz
Power Consumption	7.5 W
Lamp Current (Max)	57 mA

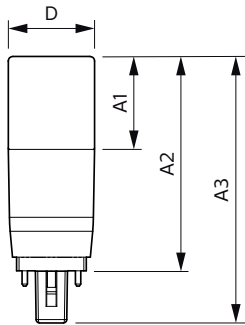
Lamp Current (Min)	57 mA
Lamp Current (Nom)	57 mA
Starting Time (Nom)	0.5 s
Warm-up time to 60% light	0.5 s
Power Factor (Fraction)	0.5
Voltage (Nom)	220-240 V
Temperature	
Ambient temperature range	-20 °C to 45 °C
T-Case Maximum (Nom)	64 °C
Controls and Dimming	
Dimmable	No
Mechanical and Housing	
Product Length	100 mm
Bulb Shape	PL-C
Approval and Application	
Energy Saving Product	Yes
Approval Marks	RoHS compliance CE marking KEMA Keur certificate

## CorePro LED PLC 2P

Energy Consumption kWh/1000 h	- kWh
<b>Product Data</b>	
Order product name	LED PLC 7.5W 865 2P G24d
Full product name	LED PLC 7.5W 865 2P G24d
Full product code	871869681020000
Order code	929001879108

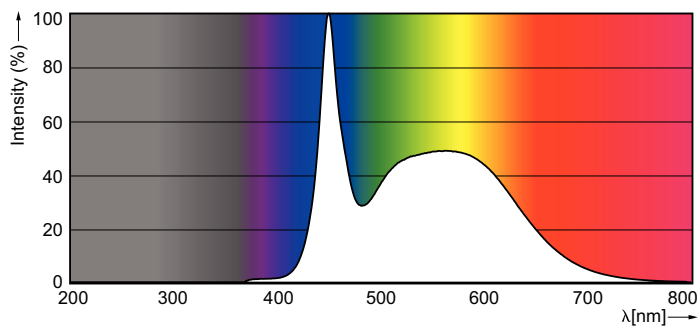
Material Nr. (12NC)	929001879108
Numerator - Quantity Per Pack	1
EAN/UPC - Product/Case	8718696810200
Numerator - Packs per outer box	10
EAN/UPC - Case	8718696810217

## Dimensional drawing

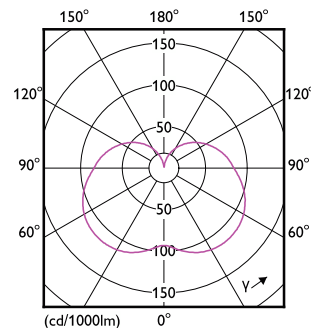


Product	D	A1	A2	A3
LED PLC 7.5W 865 2P G24d	37.2 mm	40 mm	92.5 mm	115 mm

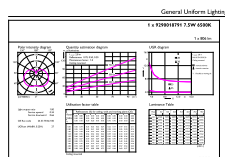
### Photometric data



Spectral Power Distribution Colour - LED PLC 7.5W 865 2P G24d



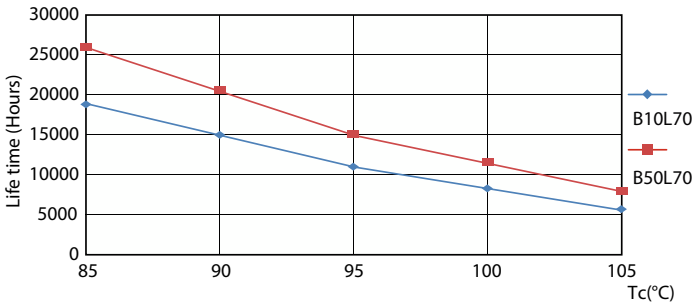
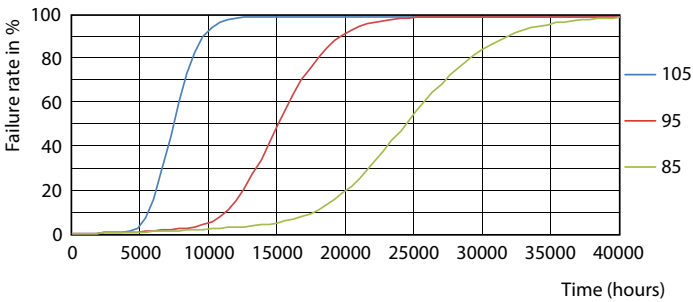
**Light Distribution Diagram - LED PLC 7.5W 865 2P G24d**



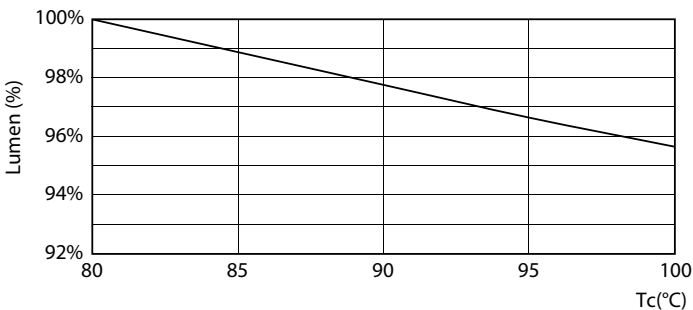
General uniform lighting - LED PLC 7.5W 865 2P G24d

CorePro LED PLC 2P

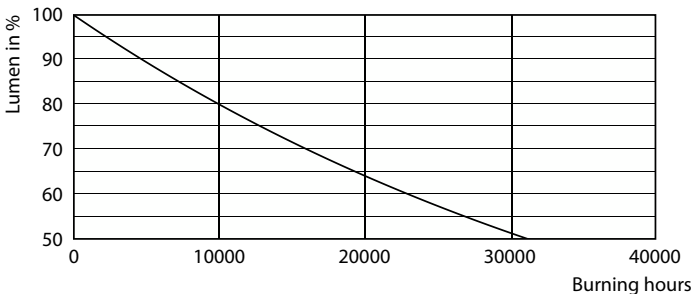
Lifetime



Life Expectancy Diagram - LED PLC 7.5W 865 2P G24d

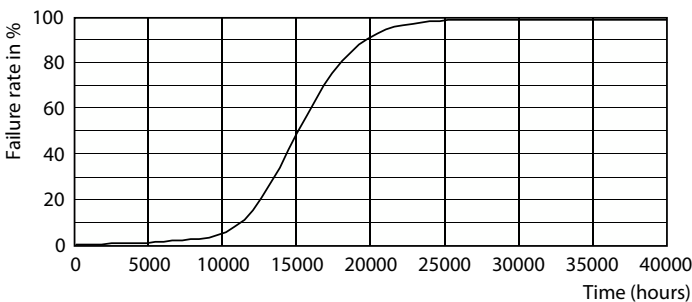


Lumen Maintenance Diagram - LED PLC 7.5W 865 2P G24d



Lumen Maintenance Diagram - LED PLC 7.5W 865 2P G24d

Life Expectancy Diagram - LED PLC 7.5W 865 2P G24d



Life Expectancy Diagram - LED PLC 7.5W 865 2P G24d

## CorePro LED PLC 2P

