



# CorePro LED PLC 2P

## LED PLC 9W 830 2P G24d

CorePro LED PLC 2P integrates a LED light source into a traditional fluorescent form factor. This product is the ideal solution for uplampping in general lighting applications: it meets basic lighting requirements, offers significant energy savings, and is environmentally friendly.

### Product data

General Information	
Cap-Base	G24d
Nominal lifetime	15,000 hour(s)
Switching Cycle	50,000
Lighting Technology	LED
EU RoHS compliant	Yes
Light Technical	
Color Code	830 [CCT of 3000K]
Beam Angle (Nom)	240 degree(s)
Luminous Flux	950 lm
Color Designation	White (WH)
Correlated Color Temperature (Nom)	3000 K
Luminous Efficacy (rated) (Nom)	105.00 lm/W
Color Consistency	<6
Color rendering index (CRI)	80
LLMF At End Of Nominal Lifetime (Nom)	70 %
Operating and Electrical	
Line Frequency	50 to 60 Hz
Input Frequency	50 to 60 Hz
Power Consumption	9 W
Lamp Current (Max)	70 mA

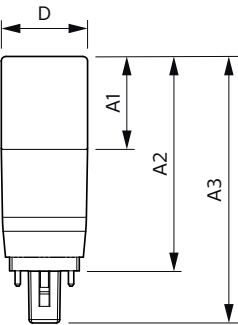
Lamp Current (Min)	70 mA
Lamp Current (Nom)	70 mA
Starting Time (Nom)	0.5 s
Warm-up time to 60% light	0.5 s
Power Factor (Fraction)	0.5
Voltage (Nom)	220-240 V
Temperature	
Ambient temperature range	-20 °C to 45 °C
T-Case Maximum (Nom)	72 °C
Controls and Dimming	
Dimmable	No
Mechanical and Housing	
Product Length	100 mm
Bulb Shape	PL-C
Approval and Application	
Energy Saving Product	Yes
Approval Marks	RoHS compliance CE marking KEMA Keur certificate

CorePro LED PLC 2P

Energy Consumption kWh/1000 h	- kWh
Product Data	
Order product name	LED PLC 9W 830 2P G24d
Full product name	LED PLC 9W 830 2P G24d
Full product code	871869681022400
Order code	929001879208

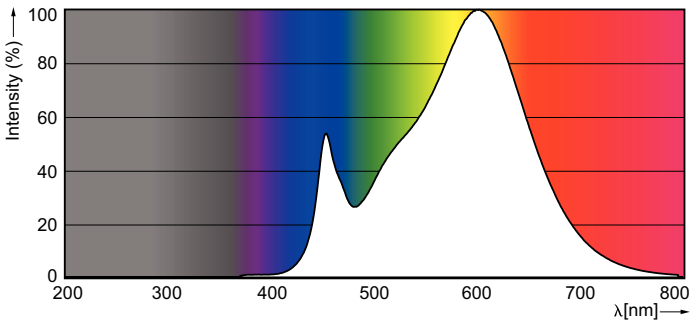
Material Nr. (12NC)	929001879208
Numerator - Quantity Per Pack	1
EAN/UPC - Product/Case	8718696810224
Numerator - Packs per outer box	10
EAN/UPC - Case	8718696810231

Dimensional drawing

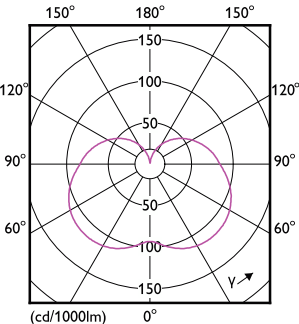


Product	D	A1	A2	A3
LED PLC 9W 830 2P G24d	37.2 mm	40 mm	92.5 mm	115 mm

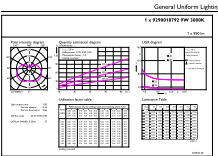
Photometric data



Spectral Power Distribution Colour - LED PLC 9W 830 2P G24d



Light Distribution Diagram - LED PLC 9W 830 2P G24d

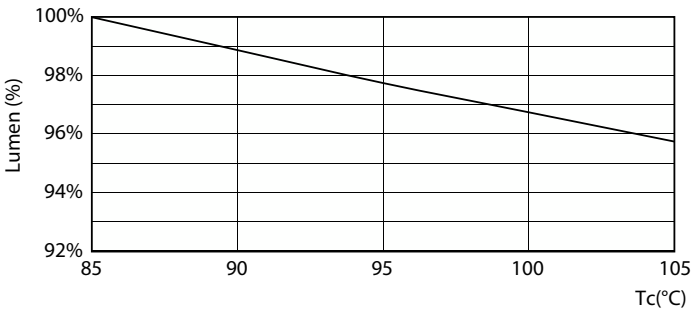
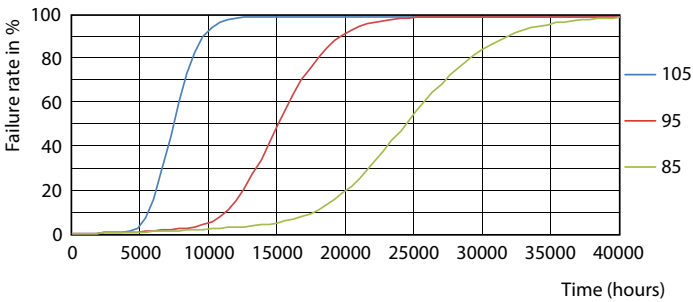


General uniform lighting - LED PLC 9W 830 2P G24d

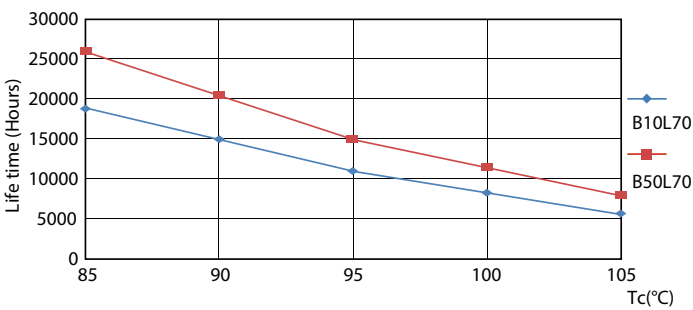
General uniform lighting - LED PLC 9W 830 2P G24d

CorePro LED PLC 2P

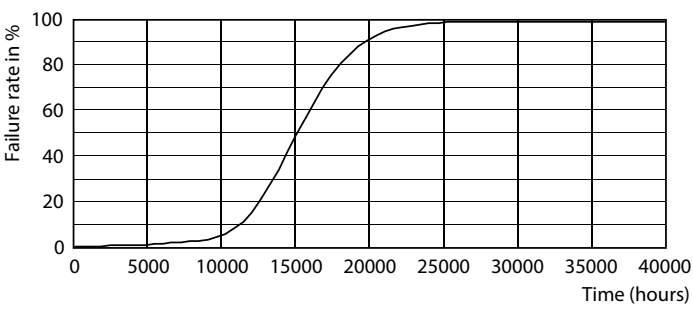
Lifetime



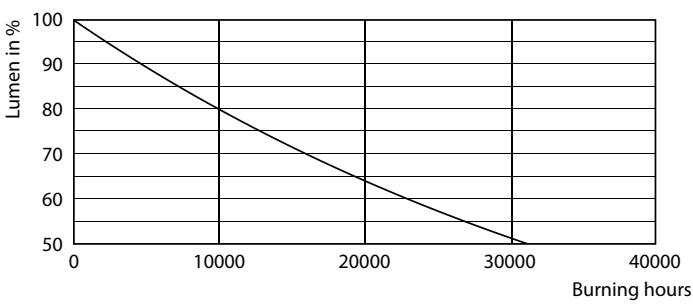
Life Expectancy Diagram - LED PLC 9W 830 2P G24d



Lumen Maintenance Diagram - LED PLC 9W 830 2P G24d



Life Expectancy Diagram - LED PLC 9W 830 2P G24d



Life Expectancy Diagram - LED PLC 9W 830 2P G24d

Lumen Maintenance Diagram - LED PLC 9W 830 2P G24d

## CorePro LED PLC 2P

