



PL-C/T

5PL-C/LED/13H/827/IF5/P/2P 20/1

Philips PLED 4-pin & 2-pin lamps are an affordable LED solution to replace compact fluorescent lamps. The product provides a natural lighting effect for use in many lighting applications, and provides instant energy savings, making them an environmentally-friendly solution. Available as replacements for 13W, 26W and 32W compact fluorescent lamps.

Product data

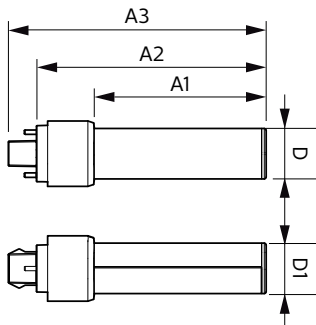
General Information		Power Factor (Nom)	
Base	GX23-2 [GX23-2]		0.9
EU RoHS compliant	Yes	Voltage (Nom)	120-277 V
Nominal Lifetime (Nom)	50000 h	Temperature	
Switching Cycle	50000X	T-Ambient (Max)	45 °C
Light Technical		T-Ambient (Min)	-20 °C
Color Code	827 [CCT of 2700K]	T-Storage (Max)	65 °C
Beam Angle (Nom)	150 °	T-Storage (Min)	-40 °C
Initial lumen (Nom)	520 lm	T-Case Maximum (Nom)	70 °C
Correlated Color Temperature (Nom)	2700 K	Controls and Dimming	
Color Consistency	<6	Dimmable	No
Color Rendering Index (Nom)	82	Approval and Application	
LLMF At End Of Nominal Lifetime (Nom)	70 %	Energy Saving Product	Yes
Operating and Electrical		Approbation Marks	UL certificate RoHS compliance
Input Frequency	50 to 60 Hz	Product Data	
Power (Rated) (Nom)	5 W	Order product name	5PL-C/LED/13H/827/IF5/P/2P 20/1
Lamp Current (Max)	50 mA	EAN/UPC - Product	046677532307
Lamp Current (Min)	15 mA	Order code	532309
Starting Time (Nom)	0.5 s	Numerator - Quantity Per Pack	1
Warm Up Time to 60% Light (Nom)	0.5 s		

PL-C/T

Numerator - Packs per outer box	20
Material Nr. (12NC)	929001884504
Net Weight (Piece)	0.001 kg

Model Number	9290018845
--------------	------------

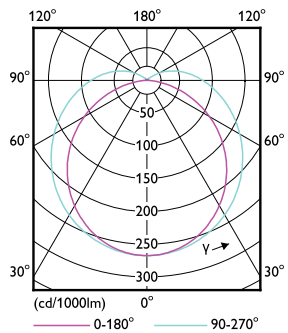
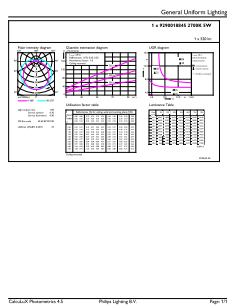
Dimensional drawing



PLED PLC-H 5-13W 550lm 2700K G24d

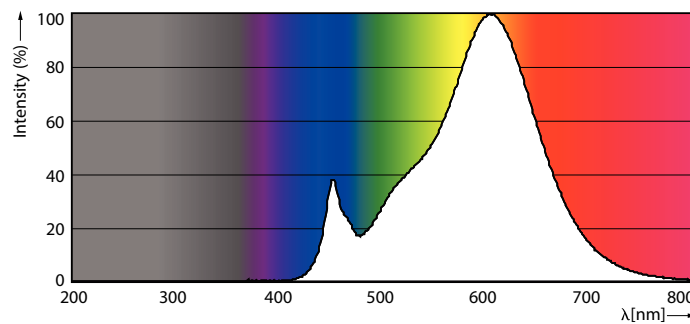
Product	D	D1	A1	A2	A3
5PL-C/LED/13H/827/IF5/P/2P	27 mm	27 mm	91.5 mm	122.4 mm	137.4 mm
20/1					

Photometric data



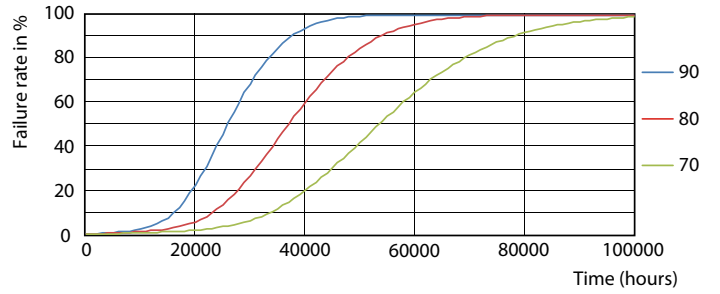
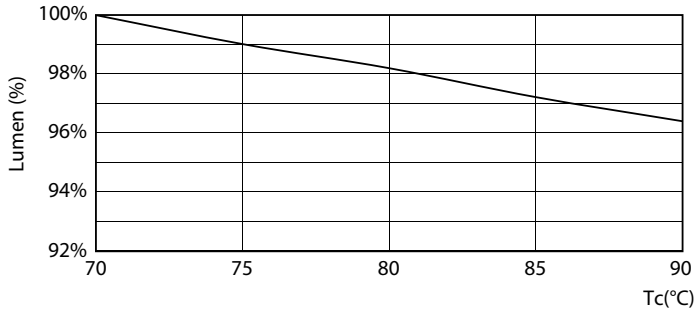
LEDtube PLC 13H 5W GX23-2 827 15D ND

LEDtube PLC 13H 5W GX23-2 827 15D ND

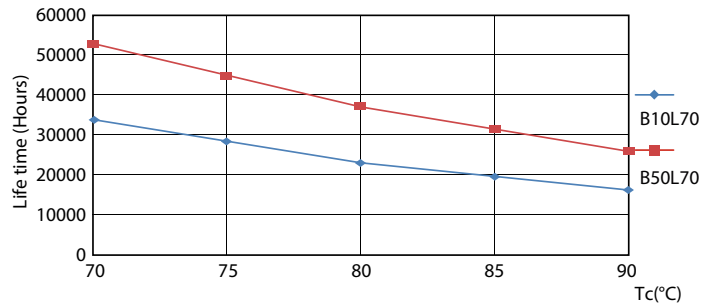
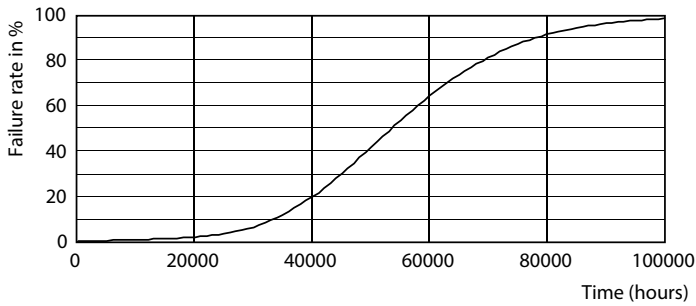


LEDtube PLC 13H 5W GX23-2 827 15D ND

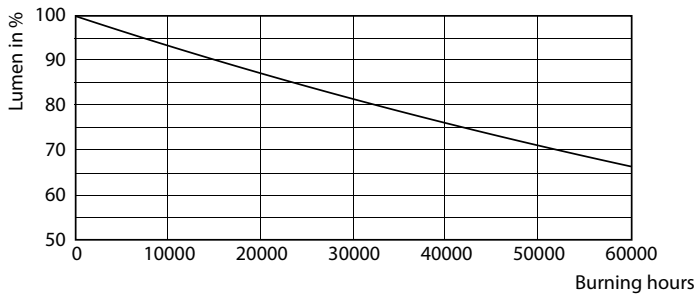
Lifetime



LEDtube PLC 13H 5W GX23-2 827 15D ND



LEDtube PLC 13H 5W GX23-2 827 15D ND



LEDtube PLC 13H 5W GX23-2 827 15D ND

