



# PL-C/T

## 5PL-C/LED/13H/835/IF5/P/2P 20/1

Philips PLED 4-pin & 2-pin lamps are an affordable LED solution to replace compact fluorescent lamps. The product provides a natural lighting effect for use in many lighting applications, and provides instant energy savings, making them an environmentally-friendly solution. Available as replacements for 13W, 26W and 32W compact fluorescent lamps.

### Product data

<b>General Information</b>		<b>Lamp Current (Max)</b>		50 mA
Cap-Base	GX23-2 [GX23-2]	<b>Lamp Current (Min)</b>		15 mA
Nominal lifetime	50,000 hour(s)	<b>Starting Time (Nom)</b>		0.5 s
Switching Cycle	50,000	<b>Warm-up time to 60% light</b>		0.5 s
Lighting Technology	LED	<b>Power Factor (Fraction)</b>		0.9
EU RoHS compliant	Yes	<b>Voltage (Nom)</b>		120-277 V
<b>Light Technical</b>		<b>UL Type</b>		Type A - works on ballast
Color Code	835 [CCT of 3500K]	<b>Temperature</b>		
Beam Angle (Nom)	150 degree(s)	<b>Ambient temperature range</b>		-20 °C to 45 °C
Luminous Flux	550 lm	<b>T-Case Maximum (Nom)</b>		70 °C
Color Designation	White (WH)	<b>Controls and Dimming</b>		
Correlated Color Temperature (Nom)	3500 K	<b>Dimmable</b>		No
Luminous Efficacy (rated) (Nom)	110.00 lm/W	<b>Mechanical and Housing</b>		
Color Consistency	<6	<b>Bulb Material</b>		Plastic
Color rendering index (CRI)	82	<b>Product Length</b>		140 mm
LLMF At End Of Nominal Lifetime (Nom)	70 %	<b>Bulb Shape</b>		PL-C
<b>Operating and Electrical</b>		<b>Approval and Application</b>		
Line Frequency	50 to 60 Hz	<b>Energy Saving Product</b>		Yes
Input Frequency	50 to 60 Hz			
Power Consumption	5 W			

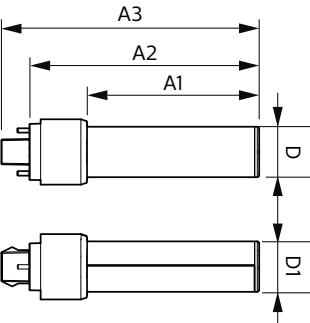
Approval Marks	UL certificate RoHS compliance
Energy Consumption kWh/1000 h	- kWh

Product Data

Order product name	5PL-C/LED/13H/835/IF5/P/2P 20/1
Full product name	5PL-C/LED/13H/835/IF5/P/2P 20/1
Order code	532333

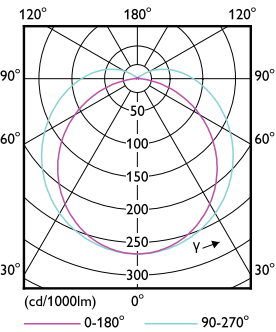
Material Nr. (12NC)	929001884704
Numerator - Quantity Per Pack	1
EAN/UPC - Product/Case	046677532338
Numerator - Packs per outer box	20
EAN/UPC - Case	50046677532333

Dimensional drawing

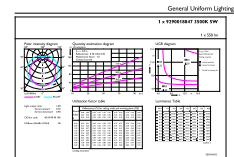


Product	D	D1	A1	A2	A3
5PL-C/LED/13H/835/IF5/P/2P 20/1	27 mm	27 mm	91.5 mm	122.4 mm	137.4 mm

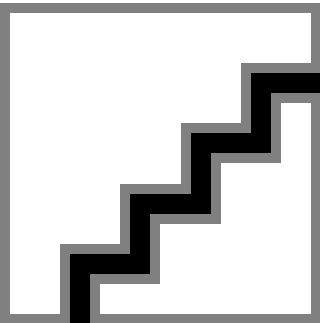
Photometric data



Light Distribution Diagram - 5PL-C/LED/13H/835/IF5/P/2P 20/1

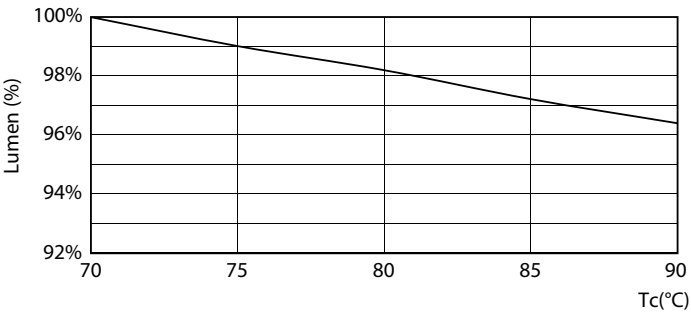


General uniform lighting - 5PL-C/LED/13H/835/IF5/P/2P 20/1

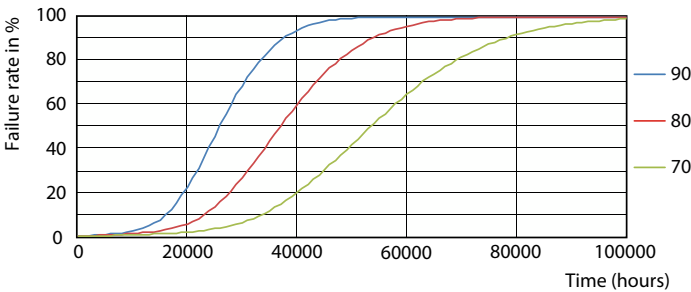


Spectral Power Distribution Colour - 5PL-C/LED/13H/835/IF5/P/2P 20/1

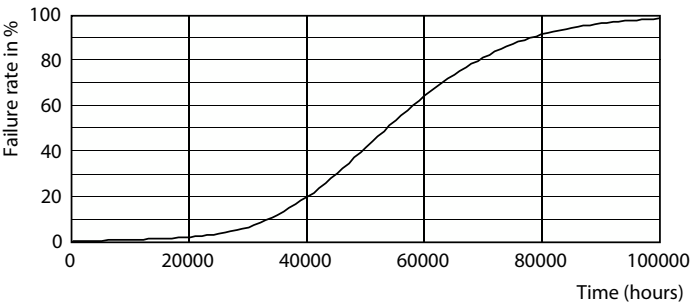
Lifetime



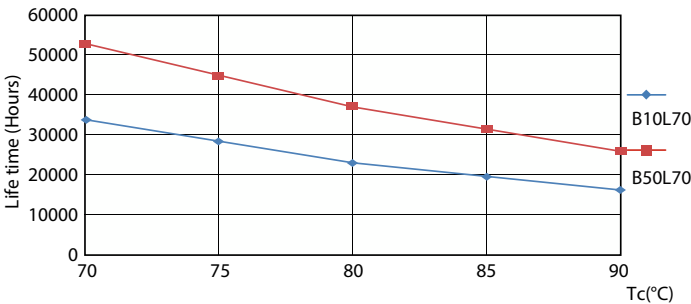
Lumen Maintenance Diagram - 5PL-C/LED/13H/835/IF5/P/2P 20/1



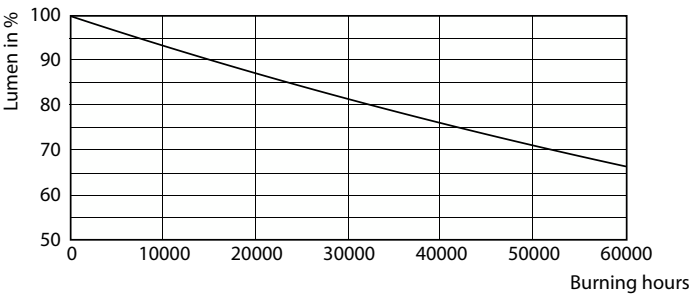
Life Expectancy Diagram - 5PL-C/LED/13H/835/IF5/P/2P 20/1



Life Expectancy Diagram - 5PL-C/LED/13H/835/IF5/P/2P 20/1



Life Expectancy Diagram - 5PL-C/LED/13H/835/IF5/P/2P 20/1



Lumen Maintenance Diagram - 5PL-C/LED/13H/835/IF5/P/2P 20/1

