



# PL-C/T

## 5PL-C/LED/13H/840/IF5/P/2P 20/1

Philips PLED 4-pin & 2-pin lamps are an affordable LED solution to replace compact fluorescent lamps. The product provides a natural lighting effect for use in many lighting applications, and provides instant energy savings, making them an environmentally-friendly solution. Available as replacements for 13W, 26W and 32W compact fluorescent lamps.

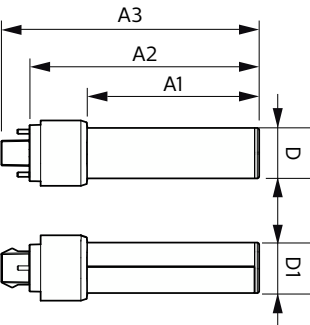
### Product data

<b>General Information</b>		<b>Lamp Current (Max)</b>		50 mA
Cap-Base	GX23-2	Lamp Current (Min)	15 mA	
Nominal lifetime	50,000 hour(s)	Wattage Equivalent	13 W	
Switching Cycle	50,000	Starting Time (Nom)	0.5 s	
Lighting Technology	LED	Warm-up time to 60% light	0.5 s	
EU RoHS compliant	Yes	Power Factor (Fraction)	0.9	
<b>Light Technical</b>		Voltage (Nom)	120-277 V	
Color Code	840 [CCT of 4000K]	UL Type	UL Type A	
Beam Angle (Nom)	150 degree(s)	<b>Temperature</b>		
Luminous Flux	580 lm	Ambient temperature range	-20 °C to 45 °C	
Color Designation	Cool White (CW)	T-Case Maximum (Nom)	70 °C	
Correlated Color Temperature (Nom)	4000 K	<b>Controls and Dimming</b>		
Luminous Efficacy (rated) (Nom)	116.00 lm/W	Dimmable	No	
Color Consistency	<6	<b>Mechanical and Housing</b>		
Color rendering index (CRI)	82	Bulb Finish	Frosted	
LLMF At End Of Nominal Lifetime (Nom)	70 %	Bulb Material	Plastic	
<b>Operating and Electrical</b>		Product Length	122 mm	
Line Frequency	50 to 60 Hz	Bulb Shape	PL-C	
Input Frequency	50 to 60 Hz			
Power Consumption	5 W			

Approval and Application	
Energy Saving Product	Yes
Approval Marks	UL certificate RoHS compliance
Energy Consumption kWh/1000 h	- kWh
Application Conditions	
can it be used in closed luminaires	Yes
Product Data	
Order product name	5PL-C/LED/13H/840/IF5/P/2P 20/1

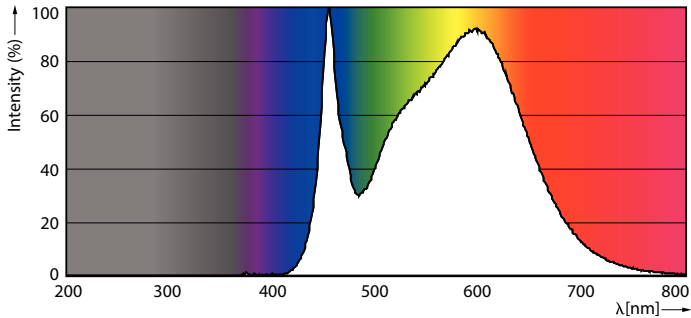
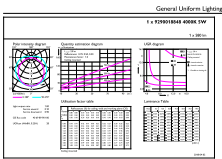
Full product name	5PL-C/LED/13H/840/IF5/P/2P 20/1
Order code	532341
Material Nr. (12NC)	929001884804
Numerator - Quantity Per Pack	1
EAN/UPC - Product/Case	046677532345
Numerator - Packs per outer box	20
EAN/UPC - Case	50046677532340

Dimensional drawing



Product	D	D1	A1	A2	A3
5PL-C/LED/13H/840/IF5/P/2P 20/1	27 mm	27 mm	91.5 mm	122.4 mm	137.4 mm

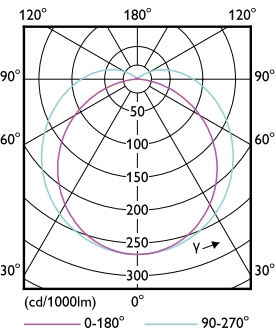
Photometric data



General uniform lighting - 5PL-C/LED/13H/840/IF5/P/2P 20/1

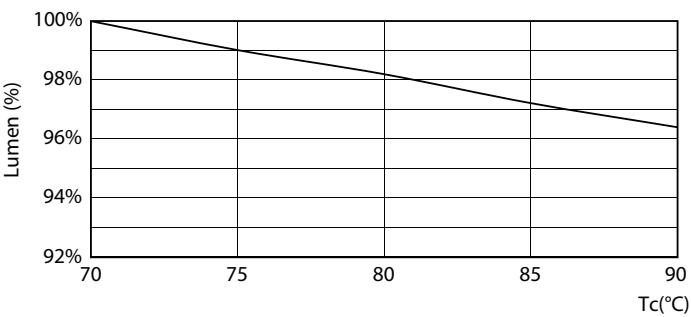
Spectral Power Distribution Colour - 5PL-C/LED/13H/840/IF5/P/2P 20/1

Photometric data

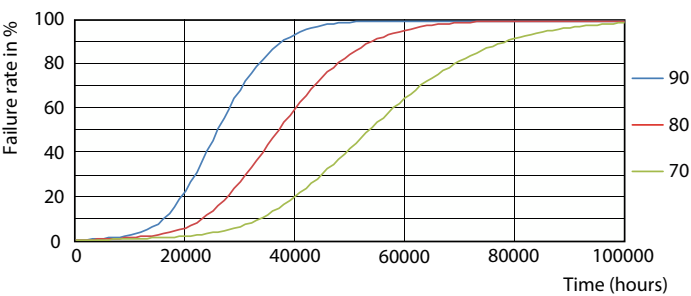


Light Distribution Diagram - 5PL-C/LED/13H/840/IF5/P/2P 20/1

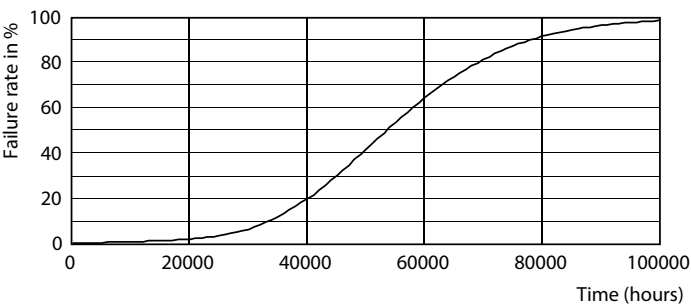
Lifetime



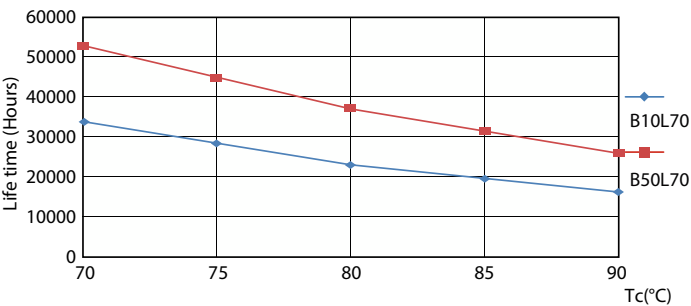
Lumen Maintenance Diagram - 5PL-C/LED/13H/840/IF5/P/2P 20/1



Life Expectancy Diagram - 5PL-C/LED/13H/840/IF5/P/2P 20/1

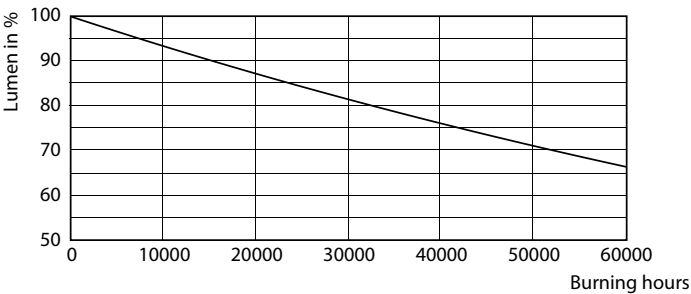


Life Expectancy Diagram - 5PL-C/LED/13H/840/IF5/P/2P 20/1



Life Expectancy Diagram - 5PL-C/LED/13H/840/IF5/P/2P 20/1

Lifetime



Lumen Maintenance Diagram - 5PL-C/LED/13H/840/IF5/P/2P 20/1

