



PL-C/T

5PL-C/LED/13H/840/IF5/P/2P 20/1

Philips PLED 4-pin & 2-pin lamps are an affordable LED solution to replace compact flourescent lamps. The product provides a natural lighting effect for use in many lighting applications, and provides instant energy savings, making them an environmentally-friendly solution. Available as replacements for 13W, 26W and 32W compact fluorescent lamps.

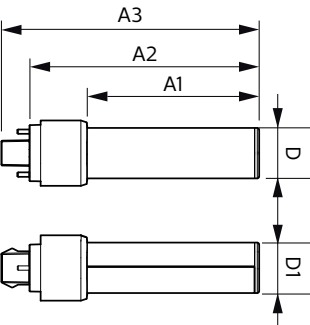
Product data

General Information			
Cap-Base	GX23-2	Lamp Current (Max)	50 mA
Nominal lifetime	50,000 hour(s)	Lamp Current (Min)	15 mA
Switching Cycle	50,000	Wattage Equivalent	13 W
Lighting Technology	LED	Starting Time (Nom)	0.5 s
EU RoHS compliant	Yes	Warm-up time to 60% light	0.5 s
Light Technical		Power Factor (Fraction)	0.9
Color Code	840 [CCT of 4000K]	Voltage (Nom)	120-277 V
Beam Angle (Nom)	150 degree(s)	UL Type	UL Type A
Luminous Flux	580 lm	Temperature	
Color Designation	Cool White (CW)	Ambient temperature range	-20 °C to 45 °C
Correlated Color Temperature (Nom)	4000 K	T-Case Maximum (Nom)	70 °C
Luminous Efficacy (rated) (Nom)	116.00 lm/W	Controls and Dimming	
Color Consistency	<6	Dimmable	No
Color rendering index (CRI)	82	Mechanical and Housing	
LLMF At End Of Nominal Lifetime (Nom)	70 %	Bulb Finish	Frosted
Operating and Electrical		Bulb Material	Plastic
Line Frequency	50 to 60 Hz	Product Length	122 mm
Input Frequency	50 to 60 Hz	Bulb Shape	PL-C
Power Consumption	5 W		

Approval and Application	
Energy Saving Product	Yes
Approval Marks	UL certificate RoHS compliance
Energy Consumption kWh/1000 h	- kWh
Application Conditions	
can it be used in closed luminaires	Yes
Product Data	
Order product name	5PL-C/LED/13H/840/IF5/P/2P 20/1

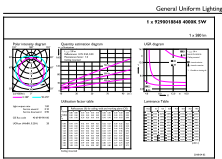
Full product name	5PL-C/LED/13H/840/IF5/P/2P 20/1
Order code	929001884804
Material Nr. (12NC)	929001884804
Numerator - Quantity Per Pack	1
EAN/UPC - Product/Case	046677532345
Numerator - Packs per outer box	20
EAN/UPC - Case	50046677532340

Dimensional drawing

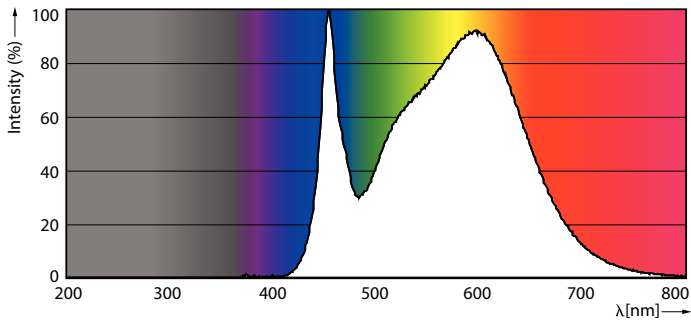


Product	D	D1	A1	A2	A3
5PL-C/LED/13H/840/IF5/P/2P 20/1	27 mm	27 mm	91.5 mm	122.4 mm	137.4 mm

Photometric data

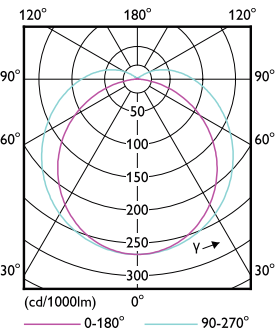


General uniform lighting - 5PL-C/LED/13H/840/IF5/P/2P 20/1



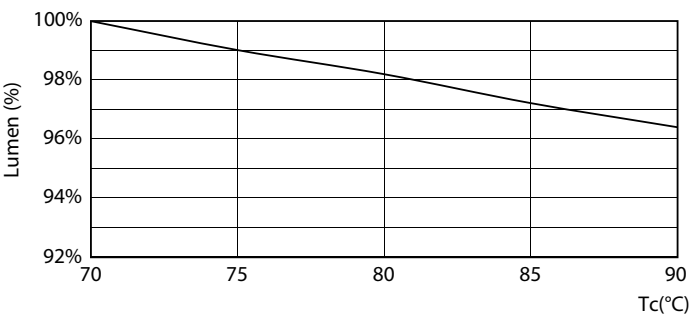
Spectral Power Distribution Colour - 5PL-C/LED/13H/840/IF5/P/2P 20/1

Photometric data

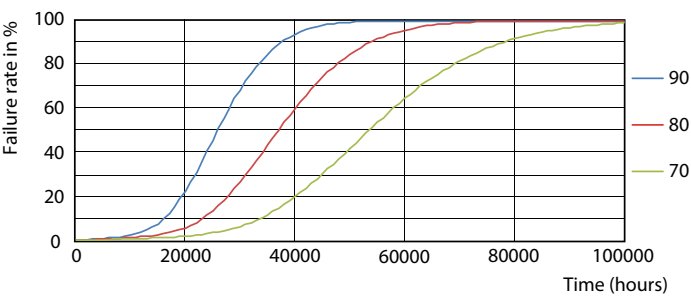


Light Distribution Diagram - 5PL-C/LED/13H/840/IF5/P/2P 20/1

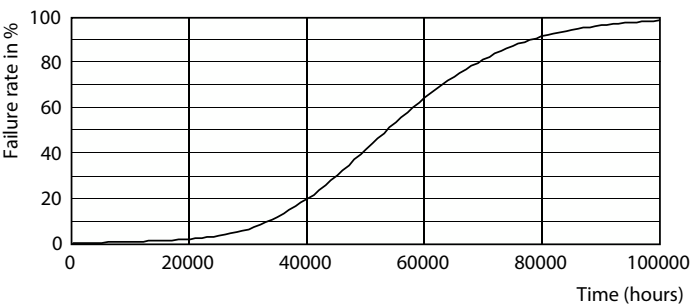
Lifetime



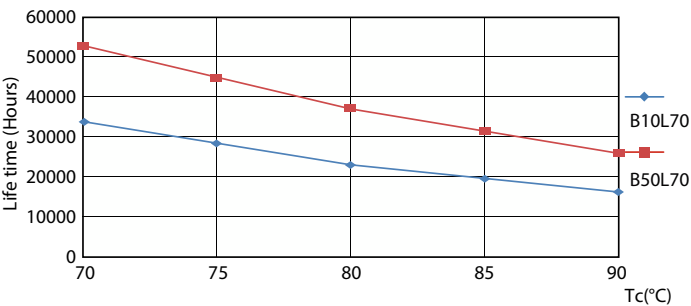
Lumen Maintenance Diagram - 5PL-C/LED/13H/840/IF5/P/2P 20/1



Life Expectancy Diagram - 5PL-C/LED/13H/840/IF5/P/2P 20/1

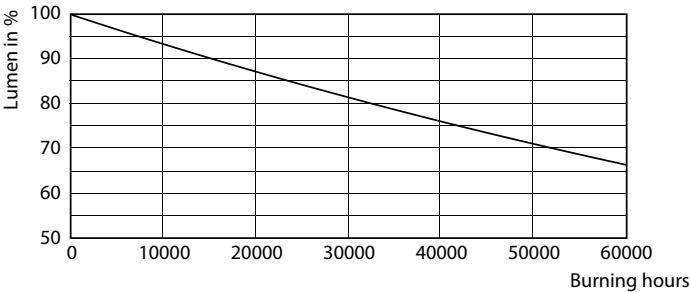


Life Expectancy Diagram - 5PL-C/LED/13H/840/IF5/P/2P 20/1



Life Expectancy Diagram - 5PL-C/LED/13H/840/IF5/P/2P 20/1

Lifetime



Lumen Maintenance Diagram - 5PL-C/LED/13H/840/IF5/P/2P 20/1

