



PL-C/T

5PL-C/LED/13V/830/IF5/P/2P 20/1

Philips PLED 4-pin & 2-pin lamps are an affordable LED solution to replace compact fluorescent lamps. The product provides a natural lighting effect for use in many lighting applications, and provides instant energy savings, making them an environmentally-friendly solution. Available as replacements for 13W, 26W and 32W compact fluorescent lamps.

Product data

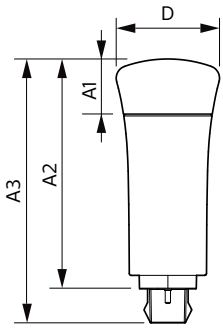
General Information		Power Factor (Nom)	
Base	GX23-2 [GX23-2]		0.9
EU RoHS compliant	Yes	Voltage (Nom)	120-277 V
Nominal Lifetime (Nom)	50000 h	Temperature	
Switching Cycle	50000X	T-Ambient (Max)	45 °C
		T-Ambient (Min)	-20 °C
		T-Storage (Max)	65 °C
		T-Storage (Min)	-40 °C
		T-Case Maximum (Nom)	70 °C
		Controls and Dimming	
		Dimmable	No
		Mechanical and Housing	
		Product Length	100 mm
		Approval and Application	
		Energy Saving Product	Yes
		Approbation Marks	UL certificate RoHS compliance
		Product Data	
		Order product name	5PL-C/LED/13V/830/IF5/P/2P 20/1
Light Technical			
Color Code	830 [CCT of 3000K]		
Beam Angle (Nom)	150 °		
Initial lumen (Nom)	550 lm		
Correlated Color Temperature (Nom)	3000 K		
Color Consistency	<6		
Color Rendering Index (Nom)	82		
LLMF At End Of Nominal Lifetime (Nom)	70 %		
Operating and Electrical			
Input Frequency	50 to 60 Hz		
Power (Rated) (Nom)	5 W		
Lamp Current (Max)	50 mA		
Lamp Current (Min)	15 mA		
Starting Time (Nom)	0.5 s		
Warm Up Time to 60% Light (Nom)	0.5 s		

PL-C/T

EAN/UPC - Product	046677532369
Order code	532366
Numerator - Quantity Per Pack	1
Numerator - Packs per outer box	20
Material Nr. (12NC)	929001885004

Net Weight (Piece)	0.058 kg
Model Number	9290018850

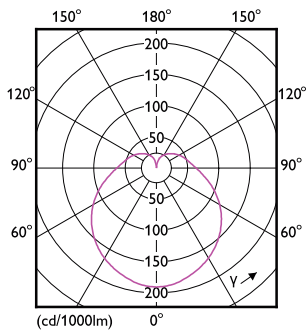
Dimensional drawing



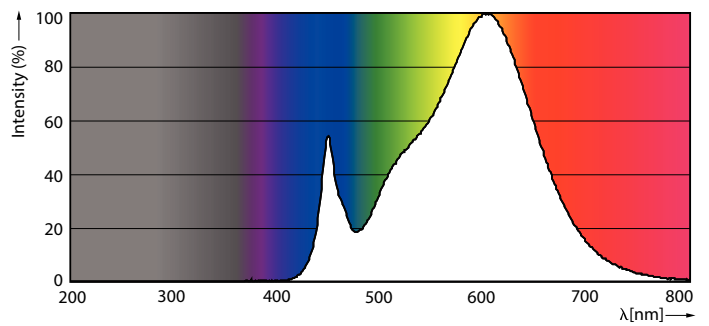
PLED PLC-V 5-13W 550lm 3000K G24d

Product	D	A1	A2	A3
5PL-C/LED/13V/830/IF5/P/2P 20/1	45.7 mm	24.6 mm	101.6 mm	117.6 mm

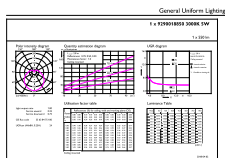
Photometric data



LEDtube PLC 13V 5W GX23-2 827 15D ND



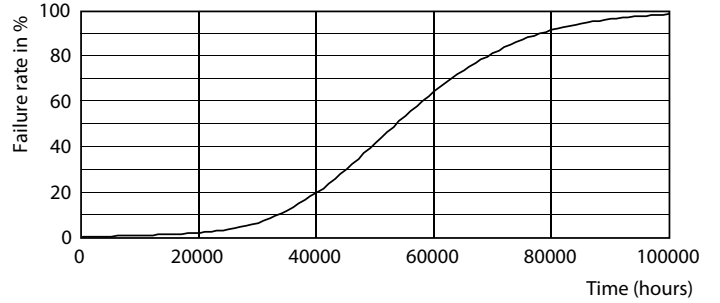
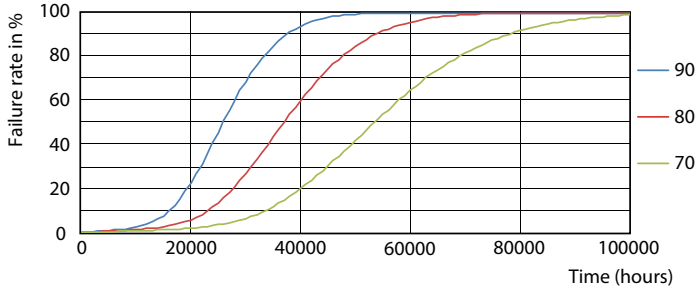
LEDtube PLC 13V 5W GX23-2 830 15D ND



General Uniform Lighting

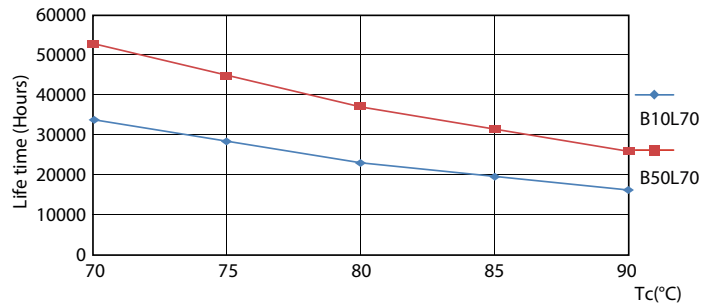
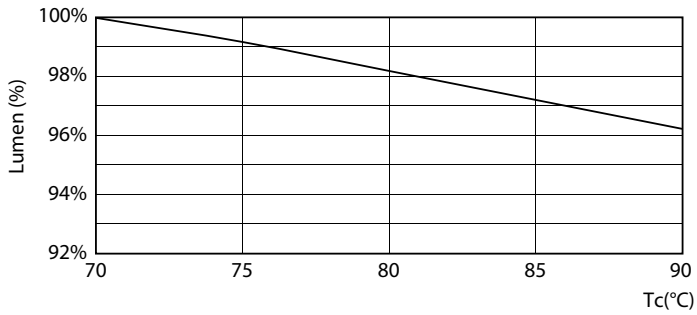
LEDtube PLC 13V 5W GX23-2 830 15D ND

Lifetime



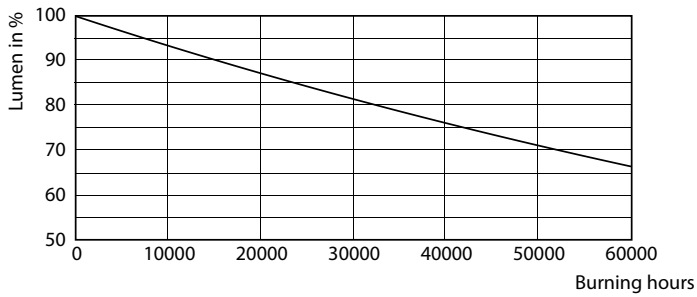
LEDtube PLC 13H 5W GX23-2 827 15D ND

LEDtube PLC 13H 5W GX23-2 827 15D ND



LEDtube PLC 13V 5W GX23-2 827 15D ND

LEDtube PLC 13H 5W GX23-2 827 15D ND



LEDtube PLC 13H 5W GX23-2 827 15D ND

