



PL-C/T

5.5PL-C/LED/13H/835/IF5/P/4P 20/1

Philips PLED 4-pin & 2-pin lamps are an affordable LED solution to replace compact fluorescent lamps. The product provides a natural lighting effect for use in many lighting applications, and provides instant energy savings, making them an environmentally-friendly solution. Available as replacements for 13W, 26W and 32W compact fluorescent lamps.

Product data

General Information	
Base	G24Q [G24q]
EU RoHS compliant	Yes
Nominal Lifetime (Nom)	50000 h
Switching Cycle	50000X
Light Technical	
Color Code	835 [CCT of 3500K]
Beam Angle (Nom)	150 °
Initial lumen (Nom)	550 lm
Correlated Color Temperature (Nom)	3500 K
Luminous Efficacy (rated) (Nom)	100.00 lm/W
Color Consistency	<6
Color Rendering Index (Nom)	82
LLMF At End Of Nominal Lifetime (Nom)	70 %
Operating and Electrical	
Input Frequency	25000-100000 Hz
Power (Rated) (Nom)	5.5 W
Lamp Current (Max)	280 mA
Lamp Current (Min)	130 mA
Starting Time (Nom)	0.5 s

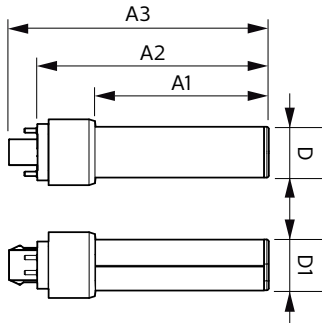
Warm Up Time to 60% Light (Nom)	0.5 s
Power Factor (Nom)	0.9
Voltage (Nom)	14-60 V
Temperature	
T-Ambient (Max)	45 °C
T-Ambient (Min)	-20 °C
T-Storage (Max)	65 °C
T-Storage (Min)	-40 °C
T-Case Maximum (Nom)	75 °C
Controls and Dimming	
Dimmable	Yes
Approval and Application	
Energy Saving Product	Yes
Approbation Marks	RoHS compliance UL certificate
Product Data	
Order product name	5.5PL-C/LED/13H/835/IF5/P/4P 20/1
EAN/UPC - Product	046677532413
Order code	532416

PL-C/T

Numerator - Quantity Per Pack	1
Numerator - Packs per outer box	20
Material Nr. (12NC)	929001885504
Net Weight (Piece)	0.060 kg

Model Number	9290018855
--------------	------------

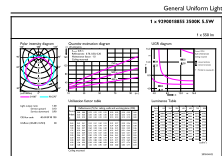
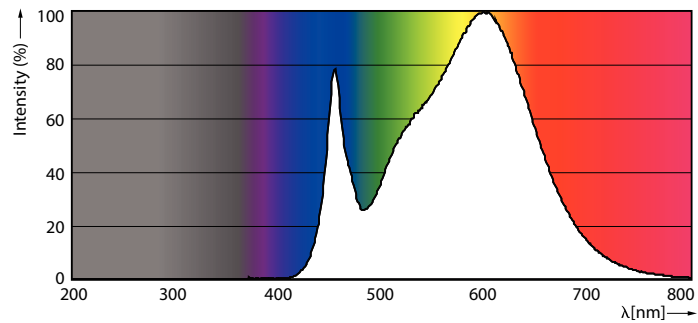
Dimensional drawing



PLED PLC-H 5-13W 580lm 3500K G24q

Product	D	D1	A1	A2	A3
5.5PL-C/LED/13H/835/IF5/P/4P	27 mm	27 mm	91.5 mm	122.4 mm	137.4 mm
20/1					

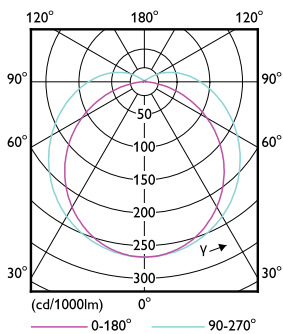
Photometric data



General Lighting Data

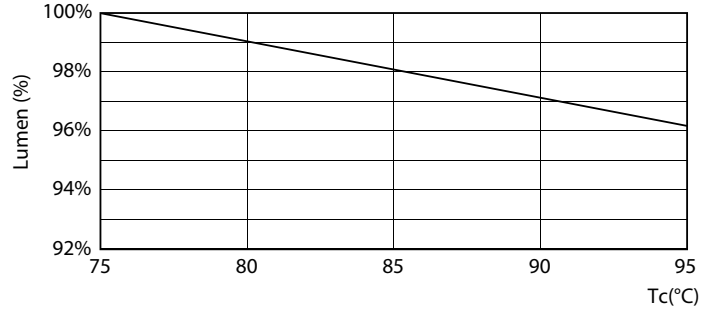
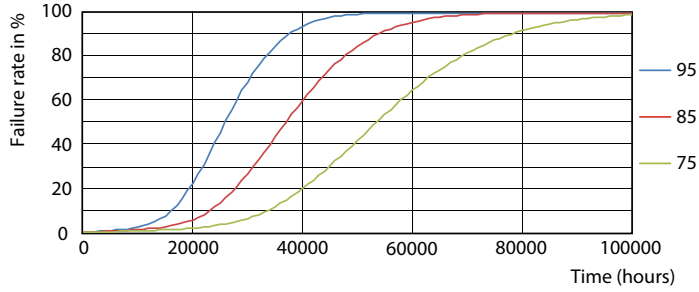
LEDtube PLC 13H 5.5W G24Q 835 15D ND

LEDtube PLC 13H 5.5W G24Q 835 15D ND



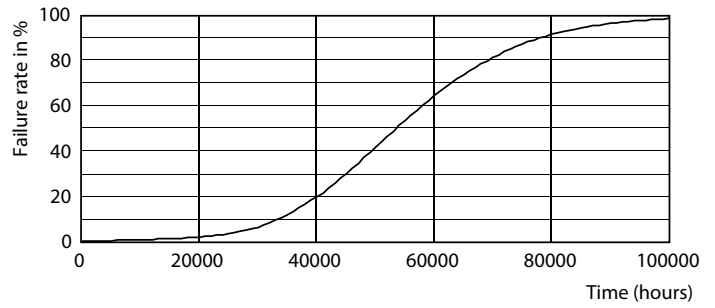
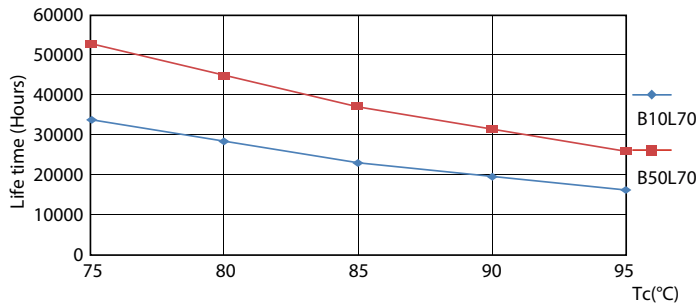
LEDtube PLC 13H 5W GX23-2 827 15D ND

Lifetime



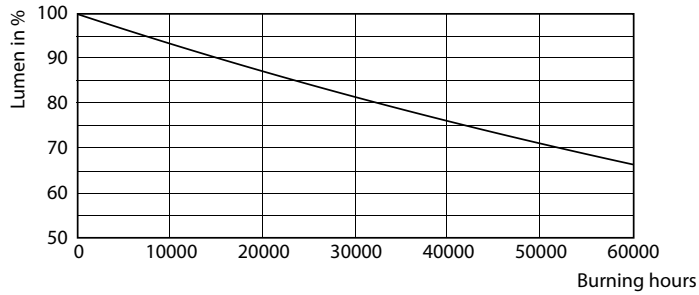
LEDtube PLC 13H 5.5W G24Q 827 15D ND

LEDtube PLC 13H 5.5W G24Q 827 15D ND



LEDtube PLC 13H 5.5W G24Q 827 15D ND

LEDtube PLC 13H 5W GX23-2 827 15D ND



LEDtube PLC 13H 5W GX23-2 827 15D ND

