



PL-C/T

5.5PL-C/LED/13V/827/IF5/P/4P 20/1

Philips PLED 4-pin & 2-pin lamps are an affordable LED solution to replace compact flourescent lamps. The product provides a natural lighting effect for use in many lighting applications, and provides instant energy savings, making them an environmentally-friendly solution. Available as replacements for 13W, 26W and 32W compact fluorescent lamps.

Product data

General Information			
Cap-Base	G24Q [G24q]	Lamp Current (Max)	280 mA
Nominal lifetime	50,000 hour(s)	Lamp Current (Min)	130 mA
Switching Cycle	50,000	Wattage Equivalent	13 W
Lighting Technology	LED	Starting Time (Nom)	0.5 s
EU RoHS compliant	Yes	Warm-up time to 60% light	0.5 s
Light Technical		Power Factor (Fraction)	0.9
Color Code	827 [CCT of 2700K]	Voltage (Nom)	14-60 V
Beam Angle (Nom)	150 degree(s)	UL Type	UL Type A
Luminous Flux	520 lm	Temperature	
Color Designation	Warm White (WW)	Ambient temperature range	-20 °C to 45 °C
Correlated Color Temperature (Nom)	2700 K	T-Case Maximum (Nom)	70 °C
Luminous Efficacy (rated) (Nom)	94.00 lm/W	Controls and Dimming	
Color Consistency	<6	Dimmable	Yes
Color rendering index (CRI)	82	Mechanical and Housing	
LLMF At End Of Nominal Lifetime (Nom)	70 %	Bulb Finish	Frosted
Operating and Electrical		Bulb Material	Plastic
Line Frequency	25000-100000 Hz	Product Length	100 mm
Input Frequency	25000-100000 Hz	Bulb Shape	PL-C
Power Consumption	5.5 W		

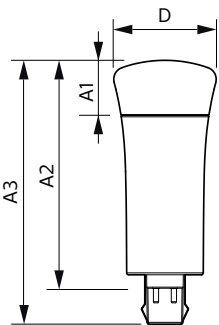
Approval and Application	
Energy Saving Product	Yes
Approval Marks	RoHS compliance UL certificate
Energy Consumption kWh/1000 h	- kWh

Application Conditions	
can it be used in closed luminaires	Yes

Product Data	
Order product name	5.5PL-C/LED/13V/827/IF5/P/4P 20/1

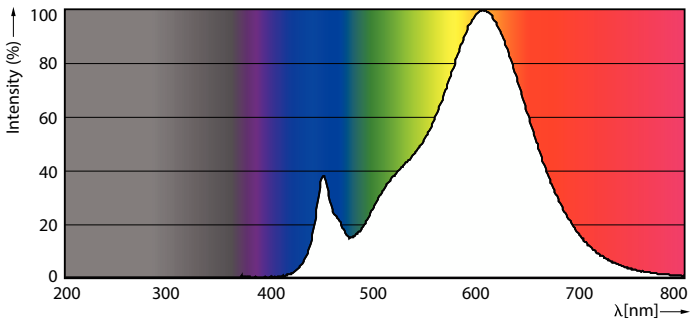
Full product name	5.5PL-C/LED/13V/827/IF5/P/4P 20/1
Order code	929001885704
Material Nr. (12NC)	929001885704
Numerator - Quantity Per Pack	1
EAN/UPC - Product/Case	046677532437
Numerator - Packs per outer box	20
EAN/UPC - Case	50046677532432

Dimensional drawing

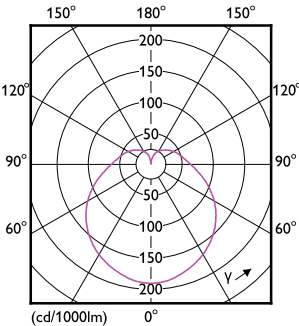


Product	D	A1	A2	A3
5.5PL-C/LED/13V/827/IF5/P/4P 20/1	45.7 mm	24.6 mm	101.6 mm	117.6 mm

Photometric data

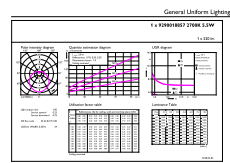


Spectral Power Distribution Colour - 5.5PL-C/LED/13V/827/IF5/P/4P 20/1



Light Distribution Diagram - 5.5PL-C/LED/13V/827/IF5/P/4P 20/1

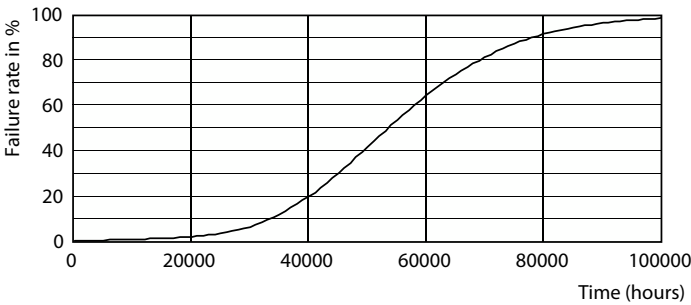
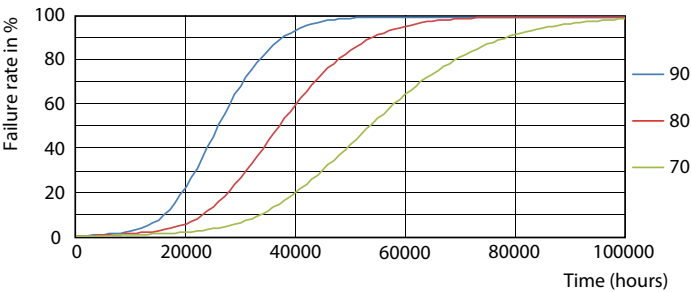
Photometric data



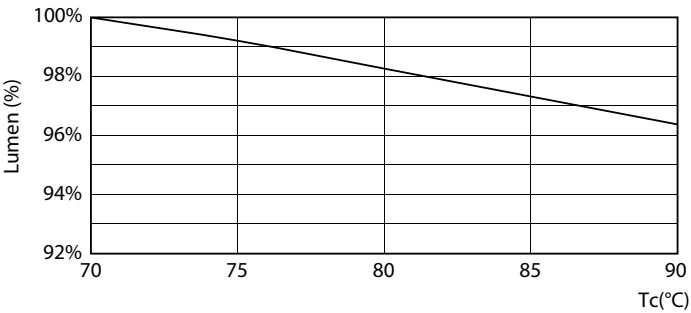
General Uniform Lighting - 5.5PL-C/LED/13V/827/IF5/P/4P 20/1

General uniform lighting - 5.5PL-C/LED/13V/827/IF5/P/4P 20/1

Lifetime

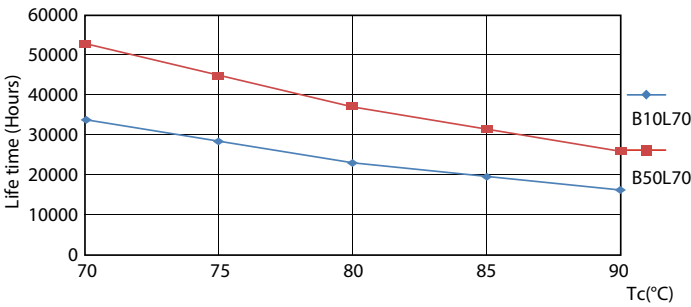


Life Expectancy Diagram - 5.5PL-C/LED/13V/827/IF5/P/4P 20/1



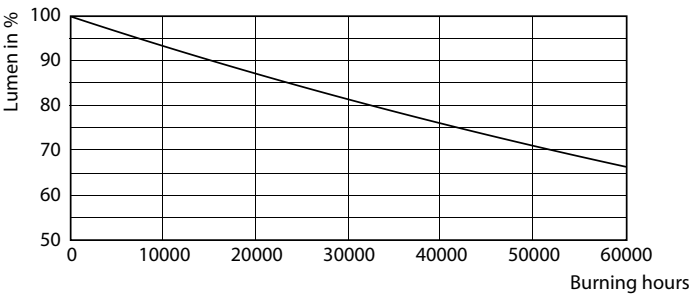
Lumen Maintenance Diagram - 5.5PL-C/LED/13V/827/IF5/P/4P 20/1

Life Expectancy Diagram - 5.5PL-C/LED/13V/827/IF5/P/4P 20/1



Life Expectancy Diagram - 5.5PL-C/LED/13V/827/IF5/P/4P 20/1

Lifetime



Lumen Maintenance Diagram - 5.5PL-C/LED/13V/827/IF5/P/4P 20/1

