



PL-C/T

5.5PL-C/LED/13V/840/IF5/P/4P 20/1

Philips PLED 4-pin & 2-pin lamps are an affordable LED solution to replace compact fluorescent lamps. The product provides a natural lighting effect for use in many lighting applications, and provides instant energy savings, making them an environmentally-friendly solution. Available as replacements for 13W, 26W and 32W compact fluorescent lamps.

Product data

General Information		Warm Up Time to 60% Light (Nom)	
Base	G24Q [G24q]		0.5 s
EU RoHS compliant	Yes	Power Factor (Nom)	0.9
Nominal Lifetime (Nom)	50000 h	Voltage (Nom)	14-60 V
Switching Cycle	50000X		
Light Technical		Temperature	
Color Code	841 [CCT of 4100K (841)]	T-Ambient (Max)	45 °C
Beam Angle (Nom)	150 °	T-Ambient (Min)	-20 °C
Initial lumen (Nom)	580 lm	T-Storage (Max)	65 °C
Correlated Color Temperature (Nom)	4000 K	T-Storage (Min)	-40 °C
Luminous Efficacy (rated) (Nom)	105.00 lm/W	T-Case Maximum (Nom)	70 °C
Color Consistency	<6	Controls and Dimming	
Color Rendering Index (Nom)	82	Dimmable	Yes
LLMF At End Of Nominal Lifetime (Nom)	70 %	Mechanical and Housing	
Operating and Electrical		Product Length	100 mm
Input Frequency	25000-100000 Hz	Approval and Application	
Power (Rated) (Nom)	5.5 W	Energy Saving Product	Yes
Lamp Current (Max)	280 mA	Approbation Marks	RoHS compliance UL certificate
Lamp Current (Min)	130 mA		
Starting Time (Nom)	0.5 s		

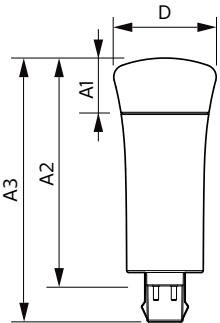
PL-C/T

Product Data

Order product name	5.5PL-C/LED/13V/840/IF5/P/4P 20/1
EAN/UPC - Product	046677532468
Order code	532465
Numerator - Quantity Per Pack	1
Numerator - Packs per outer box	20

Material Nr. (12NC)	929001886004
Net Weight (Piece)	0.058 kg
Model Number	9290018860

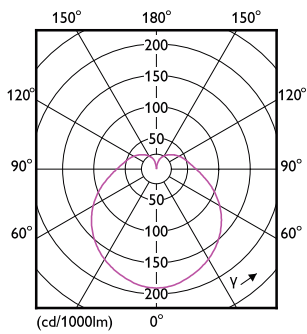
Dimensional drawing



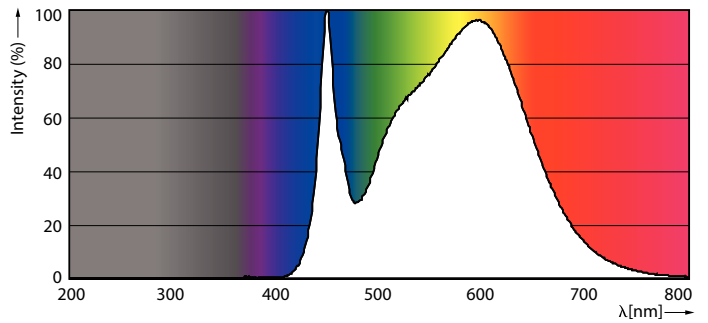
PLED PLC-V 5-13W 580lm 4000K G24q

Product	D	A1	A2	A3
5.5PL-C/LED/13V/840/IF5/P/4P 20/1	45.7 mm	24.6 mm	101.6 mm	117.6 mm

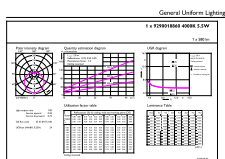
Photometric data



LEDtube PLC 13V 5W GX23-2 827 15D ND



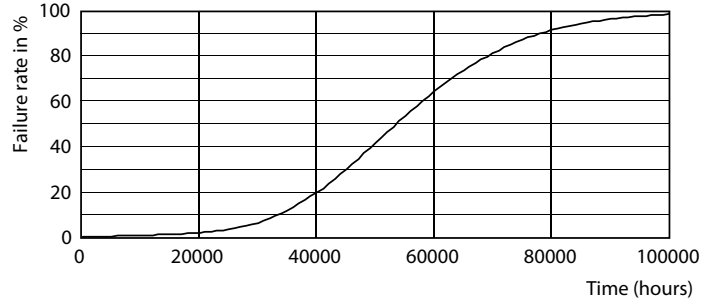
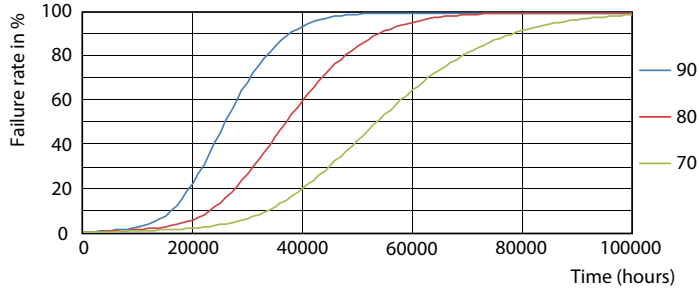
LEDtube PLC 13V 5.5W G24Q 840 15D ND



© 2020 Philips Lighting B.V. All rights reserved. Philips Lighting B.V. is a registered trademark of Philips Lighting B.V.

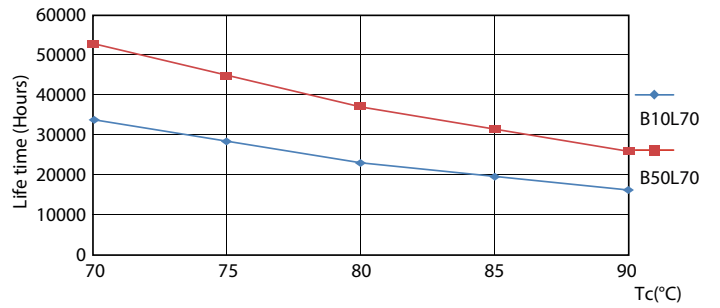
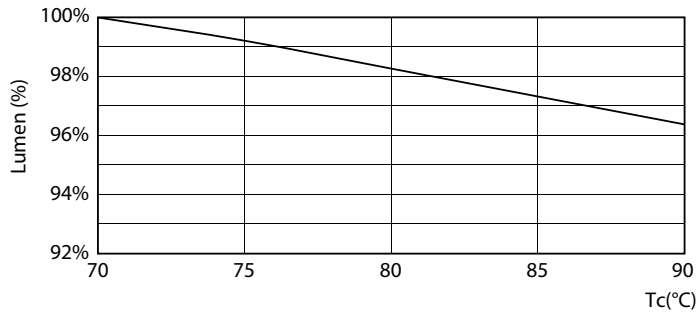
LEDtube PLC 13V 5.5W G24Q 840 15D ND

Lifetime



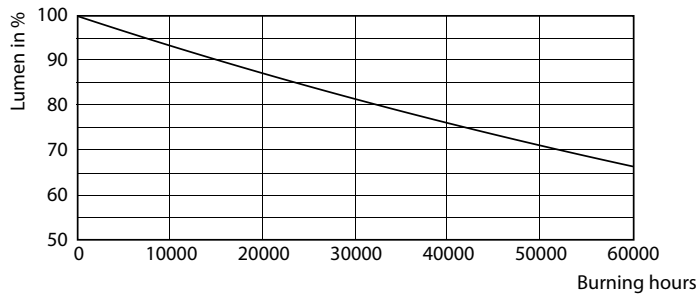
LEDtube PLC 13H 5W GX23-2 827 15D ND

LEDtube PLC 13H 5W GX23-2 827 15D ND



LEDtube PLC 13V 5.5W G24Q 827 15D ND

LEDtube PLC 13H 5W GX23-2 827 15D ND



LEDtube PLC 13H 5W GX23-2 827 15D ND

