



PL-L

16.5PL-L/PER/22/830/IF22/P 4P 10/1

Philips InstantFit LED lamps make the transition to LED from CFL lamps as simple as replacing a lamp. With a wide array of color temperatures, the InstantFit LED lamps can quickly and effectively replace compact fluorescent lamps.

Product data

General Information	
Cap-Base	2G11 [2G11]
EU RoHS compliant	Yes
Nominal Lifetime (Nom)	50000 h
Switching Cycle	50000X

Light Technical	
Color Code	830 [CCT of 3000K]
Beam Angle (Nom)	160 °
Luminous Flux (Nom)	2200 lm
Correlated Color Temperature (Nom)	3000 K
Color Consistency	<6
Color Rendering Index (Nom)	82
LLMF At End Of Nominal Lifetime (Nom)	70 %

Operating and Electrical	
Input Frequency	40000-160000 Hz
Power (Nom)	16.5 W
Lamp Current (Max)	400 mA
Lamp Current (Min)	200 mA
Starting Time (Nom)	0.5 s
Warm Up Time to 60% Light (Nom)	0.5 s
Power Factor (Nom)	0.9

Voltage (Nom)	70-110 V
---------------	----------

Temperature	
T-Ambient (Max)	45 °C
T-Ambient (Min)	-20 °C
T-Storage (Max)	65 °C
T-Storage (Min)	-40 °C
T-Case Maximum (Nom)	75 °C

Controls and Dimming	
Dimmable	No

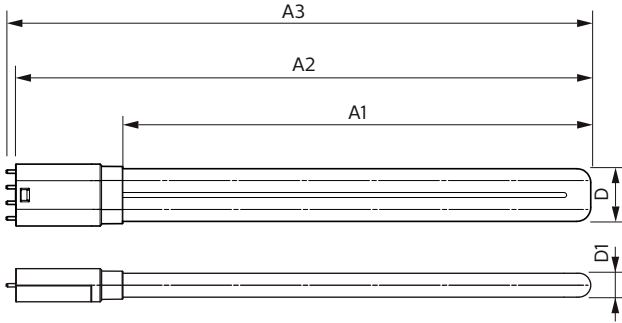
Approval and Application	
Energy Saving Product	Yes
Approval Marks	UL certificate RoHS compliance DLC compliance
Energy Certifications	DLC Standard

Product Data	
Order product name	16.5PL-L/PER/22/830/IF22/P 4P 10/1
EAN/UPC - Product	046677532895
Order code	929001893504
Numerator - Quantity Per Pack	1
Numerator - Packs per outer box	10

PL-L

Material Nr. (12NC)	929001893504
Net Weight (Piece)	0.170 kg

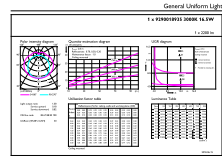
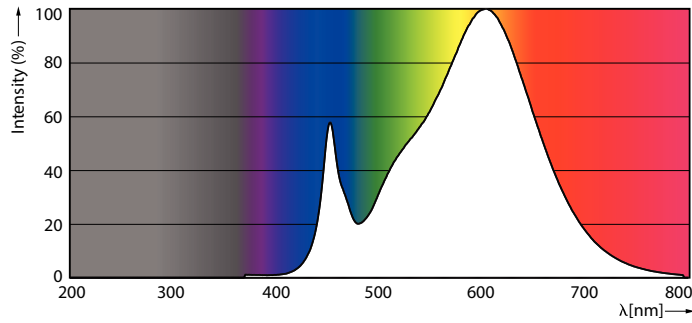
Dimensional drawing



LED PLL MasterClass 2200lm 3000K

Product	D	D1	A1	A2	A3
16.5PL-L/PER/22/830/IF22/P 4P 10/1	40.6 mm	20 mm	501 mm	564 mm	570.6 mm

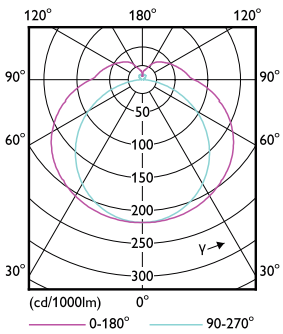
Photometric data



16-5W 2G11 830 3000K

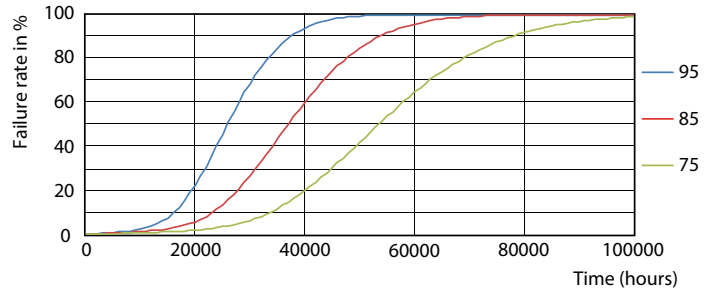
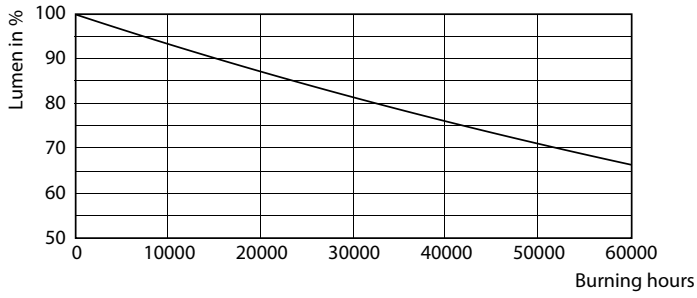
LEDtube PLC 400mm 16-5W 2G11 830 2000lm

16-5W 2G11 830 3000K



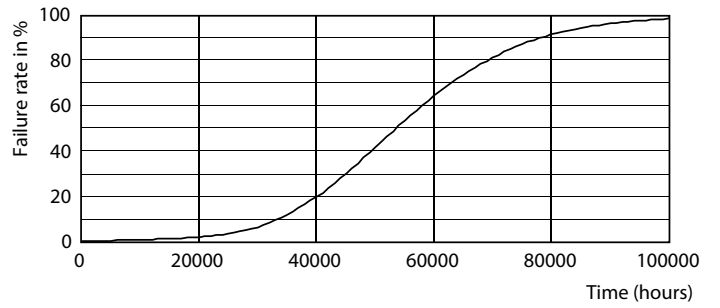
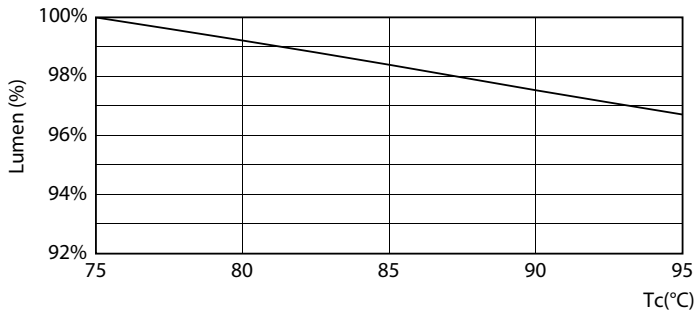
16-5W 2G11 830 3000K

Lifetime



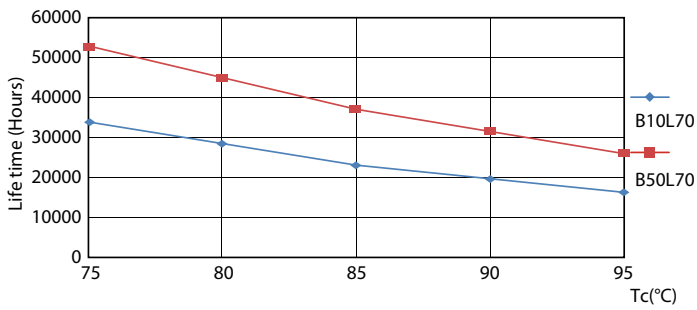
16-5W 2G11

16-5W 2G11



16-5W 2G11

16-5W 2G11



16-5W 2G11

