



# PL-L

## 16.5PL-L/PER/22/840/IF23/P 4P 10/1

Philips InstantFit LED lamps make the transition to LED from CFL lamps as simple as replacing a lamp. With a wide array of color temperatures, the InstantFit LED lamps can quickly and effectively replace compact fluorescent lamps.

### Product data

| General Information                   |                           |
|---------------------------------------|---------------------------|
| Cap-Base                              | 2G11 [ 2G11]              |
| EU RoHS compliant                     | Yes                       |
| Nominal Lifetime (Nom)                | 50000 h                   |
| Switching Cycle                       | 50000X                    |
| Light Technical                       |                           |
| Color Code                            | 841 [ CCT of 4100K (841)] |
| Beam Angle (Nom)                      | 160 °                     |
| Luminous Flux (Nom)                   | 2300 lm                   |
| Color Designation                     | Cool White (CW)           |
| Correlated Color Temperature (Nom)    | 4000 K                    |
| Luminous Efficacy (rated) (Nom)       | 139.00 lm/W               |
| Color Consistency                     | <6                        |
| Color Rendering Index (Nom)           | 82                        |
| LLMF At End Of Nominal Lifetime (Nom) | 70 %                      |
| Operating and Electrical              |                           |
| Input Frequency                       | 40000-160000 Hz           |
| Power (Rated) (Nom)                   | 16.5 W                    |
| Lamp Current (Max)                    | 400 mA                    |
| Lamp Current (Min)                    | 200 mA                    |
| Starting Time (Nom)                   | 0.5 s                     |
| Warm Up Time to 60% Light (Nom)       | 0.5 s                     |

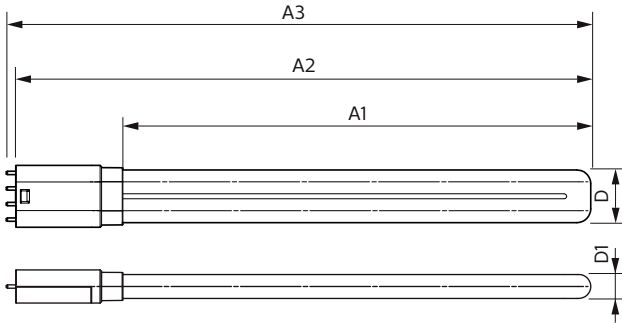
| UL Type                       | Type A - works on ballast                     |
|-------------------------------|---|
| Power Factor (Nom)            | 0.9   |
| Voltage (Nom)                 | 70-110 V                                      |
| Temperature                   |   |
| T-Ambient (Max)               | 45 °C   |
| T-Ambient (Min)               | -20 °C  |
| T-Storage (Max)               | 65 °C   |
| T-Storage (Min)               | -40 °C  |
| T-Case Maximum (Nom)          | 75 °C   |
| Controls and Dimming          |   |
| Dimmable                      | No  |
| Mechanical and Housing        |   |
| Product Length                | 580 mm  |
| Approval and Application      |   |
| Energy Efficiency Label (EEL) | Not applicable                                |
| Energy Saving Product         | Yes   |
| Approval Marks                | UL certificate RoHS compliance DLC compliance |
| Energy Consumption kWh/1000 h | - kWh   |

# PL-L

|                       |                                    |
|-----------------------|------------------------------------|
| Energy Certifications | DLC Standard                       |
| <b>Product Data</b>   |                                    |
| Order product name    | 16.5PL-L/PER/22/840/IF23/P 4P 10/1 |
| EAN/UPC - Product     | 046677532918                       |
| Order code            | 532911                             |

|                                 |              |
|---------------------------------|--------------|
| Numerator - Quantity Per Pack   | 1            |
| Numerator - Packs per outer box | 10           |
| Material Nr. (12NC)             | 929001893704 |
| Net Weight (Piece)              | 0.170 kg     |

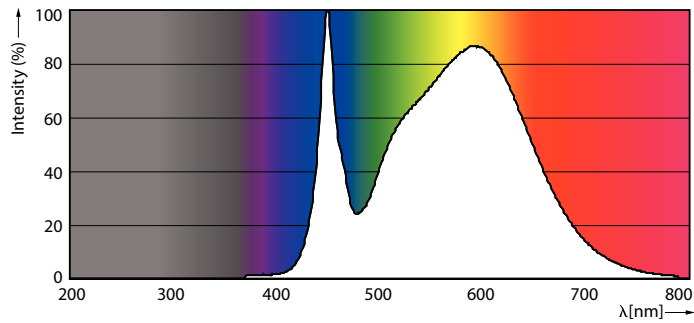
## Dimensional drawing



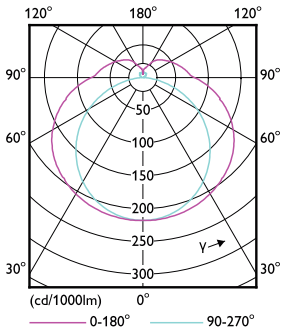
LED PLL MasterClass 2200lm 4000K

| Product                            | D       | D1    | A1     | A2     | A3       |
|------------------------------------|---------|-------|--------|--------|----------|
| 16.5PL-L/PER/22/840/IF23/P 4P 10/1 | 40.6 mm | 20 mm | 501 mm | 564 mm | 570.6 mm |

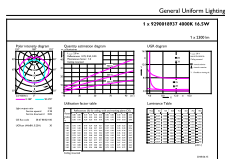
## Photometric data



16-5W 2G11



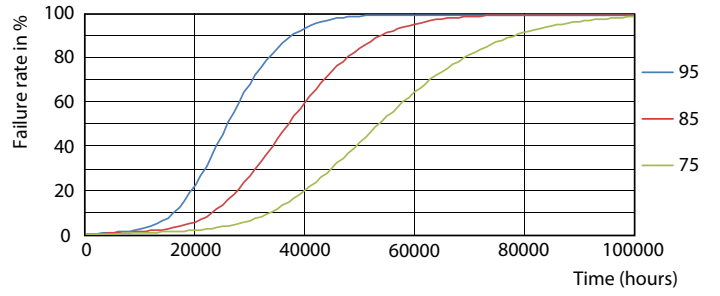
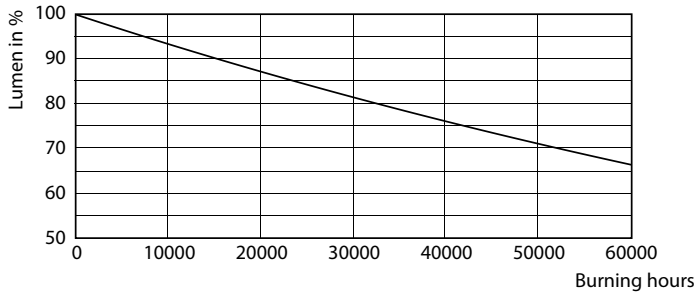
16-5W 2G11 830 3000K



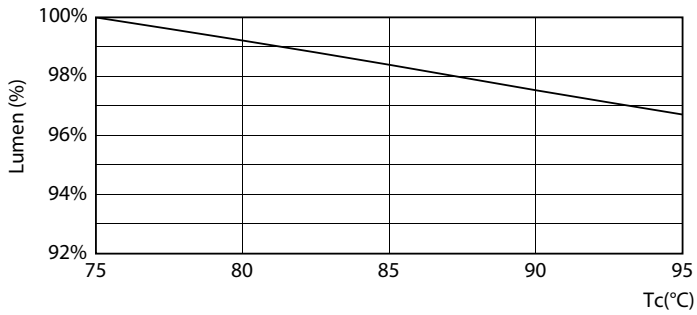
General Uniform Lightings Page 11

16-5W 2G11 840 4000K

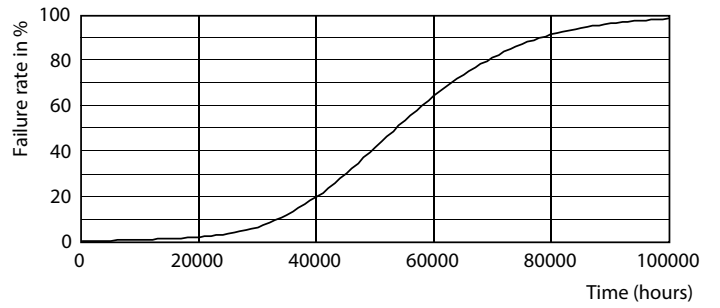
Lifetime



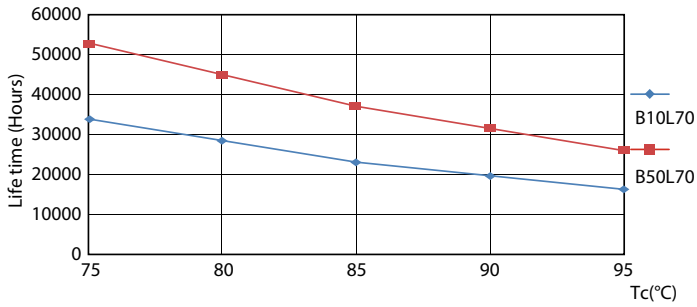
16-5W 2G11



16-5W 2G11



16-5W 2G11



16-5W 2G11

16-5W 2G11

