



PL-L

16.5PL-L/PER/22/840/IF23/P 4P 10/1

Philips InstantFit LED lamps make the transition to LED from CFL lamps as simple as replacing a lamp. With a wide array of color temperatures, the InstantFit LED lamps can quickly and effectively replace compact fluorescent lamps.

Product data

General Information	
Base	2G11 [2G11]
EU RoHS compliant	Yes
Nominal Lifetime (Nom)	50000 h
Switching Cycle	50000X

Light Technical	
Color Code	841 [CCT of 4100K (841)]
Beam Angle (Nom)	160 °
Initial lumen (Nom)	2300 lm
Correlated Color Temperature (Nom)	4000 K
Color Consistency	<6
Color Rendering Index (Nom)	82
LLMF At End Of Nominal Lifetime (Nom)	70 %

Operating and Electrical	
Input Frequency	40000-160000 Hz
Power (Rated) (Nom)	16.5 W
Lamp Current (Max)	400 mA
Lamp Current (Min)	200 mA
Starting Time (Nom)	0.5 s
Warm Up Time to 60% Light (Nom)	0.5 s
Power Factor (Nom)	0.9

Voltage (Nom)	70-110 V
---------------	----------

Temperature	
T-Ambient (Max)	45 °C
T-Ambient (Min)	-20 °C
T-Storage (Max)	65 °C
T-Storage (Min)	-40 °C
T-Case Maximum (Nom)	75 °C

Controls and Dimming	
Dimmable	No

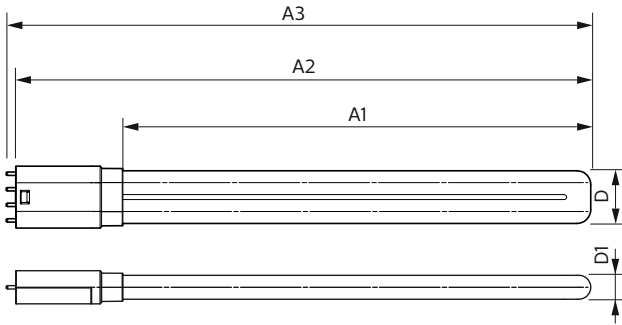
Approval and Application	
Energy Saving Product	Yes
Approbation Marks	UL certificate RoHS compliance DLC compliance
Energy Certifications	DLC Standard

Product Data	
Order product name	16.5PL-L/PER/22/840/IF23/P 4P 10/1
EAN/UPC - Product	046677532918
Order code	532911
Numerator - Quantity Per Pack	1
Numerator - Packs per outer box	10

PL-L

Material Nr. (12NC)	929001893704
Net Weight (Piece)	0.170 kg
Model Number	9290018937

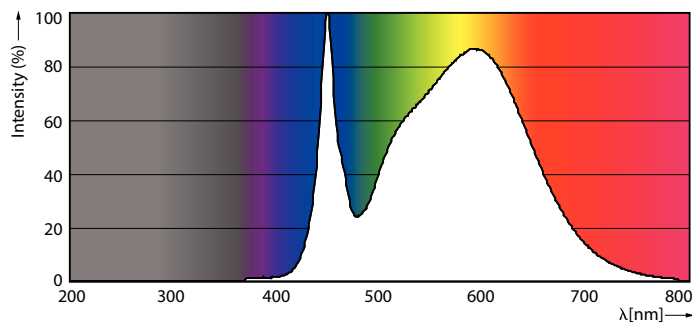
Dimensional drawing



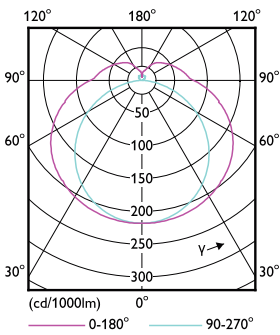
LED PLL MasterClass 2200lm 4000K

Product	D	D1	A1	A2	A3
16.5PL-L/PER/22/840/IF23/P 4P 10/1	40.6 mm	20 mm	501 mm	564 mm	570.6 mm

Photometric data



16-5W 2G11



16-5W 2G11 830 3000K

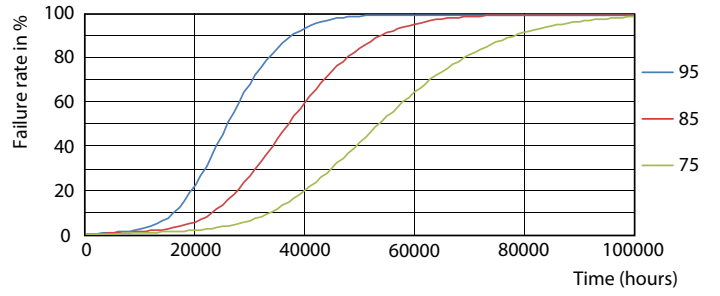
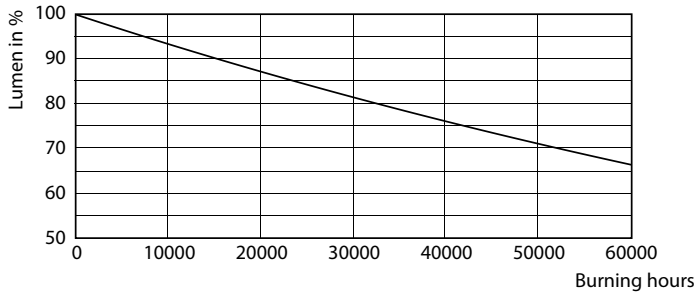
General Uniform Lighting

1 x 16.5W PL-L 840 4000K

Beam angle (°)	Beam diameter (cm)	Beam diameter (mm)	Beam diameter (in)	Beam diameter (ft)	Beam diameter (m)	Beam diameter (yd)	Beam diameter (ft)	Beam diameter (m)	Beam diameter (yd)
30°	50	500	19.7	1.6	0.5	0.6	0.6	0.6	0.6
60°	100	1000	39.4	3.2	1.0	1.2	1.2	1.2	1.2
90°	150	1500	59.1	4.8	1.5	1.8	1.8	1.8	1.8
120°	200	2000	78.7	6.4	2.0	2.4	2.4	2.4	2.4
180°	300	3000	118.0	9.6	3.0	3.6	3.6	3.6	3.6

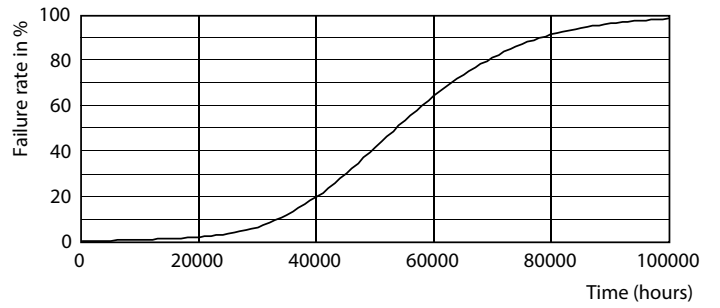
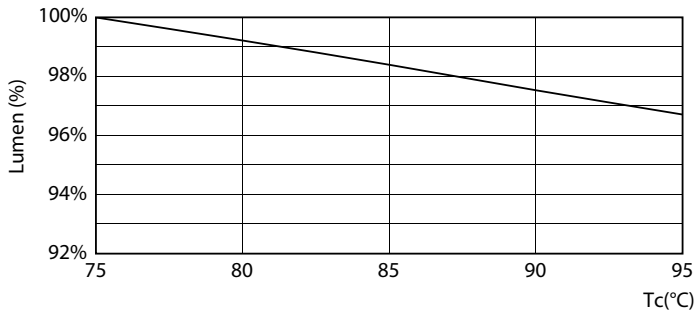
16-5W 2G11 840 4000K

Lifetime



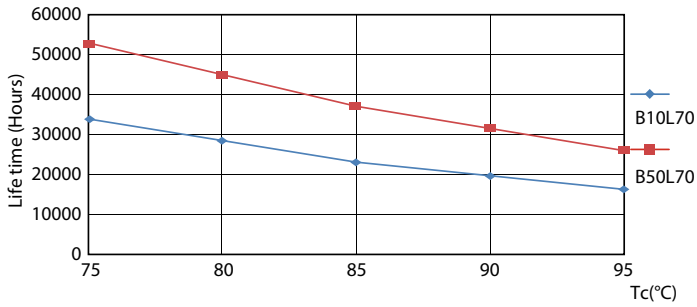
16-5W 2G11

16-5W 2G11



16-5W 2G11

16-5W 2G11



16-5W 2G11

